

ALIPRESS

The News Magazine from AliDeck



Aluminium Decking &
Balcony Component Systems



New Roof Terrace at IET London Savoy Place

Page 4-5

In this issue:

AliDeck Balcony Fires
Report 2021-2022
Page 3

New Roof Terrace at
IET London Savoy Place
Page 4-5

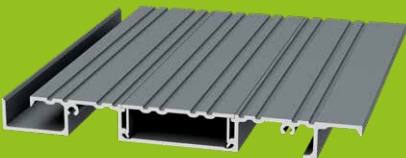
AliDeck Partner with
Extreme Steel
Page 7

PRODUCT FOCUS

AliDeck Aluminium Decking Ultra Board

The AliDeck Ultra Balcony Decking Board is our extra-wide non-combustible aluminium deck board. It has been designed as a quick-fit solution for easy installation, delivers excellent span of up to 800mm to comply with **BS8579:2020** (2.0kN point load with maximum allowable deflection of 5mm), has a fully aluminium construction, is fire resistant, and comes with our 30-year warranty.

AliDeck aluminium metal decking boards are treated with a special Qualicoat powder-coating process which colours the boards in a choice of our full range of AliDeck colours. This finish along with the aluminium construction gives the boards fire ratings of **A2-s1, d0** and **A2fl-s1** which means they are non-combustible, provide no contribution to fire, and are fully compliant with all relevant regulations and legislation.



A Message from our MD



Welcome to the fifth issue of **AliPress**, the news magazine from **AliDeck!**



Hello, I'm Richard, managing director of AliDeck.

AliDeck has grown exponentially as we continue to help bring our customers and Improved Installers the balcony components required to create a successful project outcome. AliPress is a magazine full of industry news relevant to our audience and news about our company, which is a testament to our progress.

As part of the Milwood Group of aluminium extrusion specialists, AliDeck continue to set the standard for compliant and fire-safe balcony products in a time where the building safety crisis tests the resolve of steel fabricators, balcony manufacturers, architects, and specifiers alike. Our reputation as a trail-blazing innovator comes through the devotion of our team finding new solutions to current challenges within the industry.

In the pages of AliPress this month, we take a look back at some of our key highlights throughout 2022, including our Balcony Fires Report 2021-2022, customer success stories, and important news regarding our products and business activity moving into 2023. The switch towards using aluminium balcony components as the new standard across the industry continues to gather pace, with aluminium proving a futureproof solution!

Creating success for our customers and Improved Installers is what we do, as with Project Success Built-In to our products. There is no better way to gauge our own success than through the growth and demands of our loyal customers. The dependability placed upon us is matched



by our desire to maintain our status as the market-leading supplier of aluminium decking and balcony components.

We'll cover an exciting case study and plenty more in this issue. Our collaboration on the Savoy Place refurbishment project, located in a key conservation area near the iconic London Eye. AliDeck's aluminium decking delivers a fire-safe solution for a venue that has been home to the Institution of Engineering and Technology (IET) since 1909 and transforms their widely used event space.

We hope you enjoy reading your copy of AliPress and that you find its contents informative and enlightening!

If you have any comments or question on any item in these pages, please give us a call on **01622 235 672** or email info@alideck.co.uk.

Richard Izzard
AliDeck Managing Director

CONTENTS

AliDeck Balcony Fires Report 2021-2022

Page 3

AliDeck Partner with Extreme Steel

Page 6

NEW Roof Terrace at IET London Savoy Place

Page 4-5

Creating Project Success

Page 7

For more details on any of the articles within this newsletter call the AliDeck team on **01622 534 089** or email info@alideck.co.uk.

Balcony Fires up 46% in last year, with smoking the leading cause. AliDeck Balcony Fires Report 2021-2022 uncovers shocking data

As a leading figure within the aluminium decking and balcony component market, we understand the role we must play in moving the UK towards a fire-safe future. We feel it is our duty to not only supply safe and compliant materials to the construction industry but to also provide leadership on the national conversation surrounding the building safety crisis.

Accordingly, we have once again compiled a report on the prevalence and causes of balcony fires over the previous 12 months, using Freedom of Information Act requests to UK Fire and Rescue Services to gather the data. Having received responses from all UK fire services, we are now able to outline the shocking truth regarding fires on balconies.

Our AliDeck Balcony Fires Report 2021-2022 reveals that balcony fires have significantly increased from the previous reporting period. The total figure for fires on balconies across the UK between 1st August 2021 to 31st July 2022 is 310, a substantial and concerning increase of 46% in comparison to the total figure recorded in our 2020-2021 report of “merely” 213.

Smoking-related causes accounted for a grand total of 182 balcony fires across the UK during the period, 59% of the total. This is a 10% increase compared to our previous report, when 104 fires of 213 total were caused by smoking. This depressing statistic absolutely underlines the need for balconies to become strictly non-smoking areas and also highlights the danger caused by supposedly trivial actions such as incorrectly disposing of a cigarette.

Looking at all the identified causes of balcony fires we can see that the overwhelming majority are caused by human error or reckless behaviour, with 76% of fires on balconies proven to have started by smoking, matches, arson, candles, fireworks, or barbecues. There were also 55 fires where the cause was not definitively identified, so it's very likely that the true proportion caused by people acting carelessly or stupidly was even higher!

A positive note, though, is the slightly reduced number of fires caused by barbecues, down from 21 to 15 year-on-year. In 2022, several major retailers either removed disposable BBQs from sale or limited their distribution following London Fire Brigade's stern warnings regarding the risk of major fires on balconies and in public settings, particularly during this summer's heat wave. It is also worth noting that this is the first full summer since the lifting of lockdown restrictions, allowing more people to venture outside, perhaps contributing to the reduced incidence of fires on balconies caused by barbecues.

Richard Izzard, AliDeck managing director, said “**These are shocking and depressing statistics. We had hoped to see the number of fires caused by smoking fall across the last 12 months, due to the increased awareness around fire safety as well as the progress made in remediating combustible balconies. Sadly, that is clearly not the case and much more work needs to be done to achieve a fire safe future in our nation.**”

The future of housing will certainly see us continuing to build upwards, with more mid- and high-rise apartment blocks planned for construction in cities around the UK. These developments will rightly feature many new balconies in urban areas to provide residents with access to outdoors living spaces.

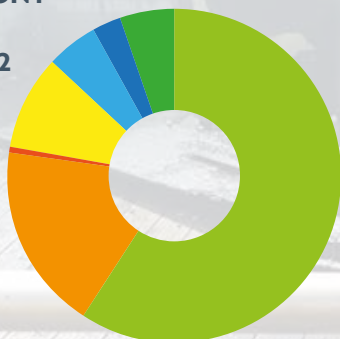
Also considering the huge number of existing developments with balconies, many of which are constructed with combustible materials such as timber or composite decking, to see so many balcony fires continuing to be caused by human error is deeply concerning.

This latest AliDeck Balcony Fires Report should serve as a warning and all stakeholders in housing and construction must take action.

To find out more about the AliDeck Balcony Fires Reports, please contact our team on **01622 534 050** or email info@alideck.co.uk.

CAUSES OF BALCONY FIRES IN GREAT BRITAIN 2021-2022

- Smoking
- Other
- Sunlight
- Matches / Arson
- Electrical
- Candles
- Barbeques



Stunning **roof terrace** completed at **IET London Savoy Place**, incredible views across the city from this beautiful space

Refurbishment projects for balconies and terraces represent major challenges for residential buildings in terms of resident upheaval, compliant specification of new material, achieving safe solutions, and aesthetic impact. For commercial buildings, however, these concerns are magnified.

Ensuring the smooth operation of the project from conception to completion is key to delivering project success for any venue, particularly so for buildings in sensitive locations. Close collaboration with all stakeholders is essential to achieve the right outcome.

AliDeck are thrilled to have supported such a key remediation project at IET London: Savoy Place and on a recent site visit following completion we enjoyed the incredible views that overlook some of London's most iconic scenery. The venue has been home to the Institution of Engineering and Technology (IET) since 1909 and hosts a wide range of events every year. It's a real peach of a building, steeped in history.

We like to work closely with our customers, ensuring that the right specifications are made to create project success for all stakeholders. In this instance, John from IET joined our estimating team in undertaking numerous site visits throughout the early stages. Careful surveying allowed us to ensure that the right products were specified for the most cost-effective solution.

Precise attention to detail was imperative for this project. Aesthetics of the finished install were extremely important as the location of the building in Central London alongside its neighbouring historical buildings required a seamless integration.

With the regular events that occur on the Savoy Place terrace, the London Eye is located just a stone's throw away across the river meaning the terrace has the potential to be seen by thousands of people on a daily basis.

Close collaboration key to roof terrace decking replacement success

Due to our hand-in-glove working relationship, IET and AliDeck were able to successfully oversee the transformation of the terrace from start to finish. Upon our initial site visit, we could see that the terrace had steels at 400mm centres, accompanied by timber decking and joists which had begun



to show signs of age. In May 2022 the final material specification was agreed by all parties and the AliDeck team moved into production.

Phase one saw the stairs and lower part of the terrace refurbished. These areas were used as a "proof of concept" of sorts to prove the practical and aesthetic impacts of our aluminium decking boards. In this section, we supplied our Junior Ridged Decking Board, Lite Joist & Pedestal Brackets with spreader plates. The outcome was positive, with all stakeholders pleased with the end result and satisfied to proceed to the whole terrace area.

Phase two included the roof terrace elevated platform, the main event space overlooking the Thames. Here, the installation team were tasked with the removal of the existing timber decking, taking the terrace back to expose the steel frame. Our aluminium decking boards and support bearing joists could then be installed directly into the framework at the required build height.

Due to the size of the supplied material, it could not be transported to the terrace internally, meaning a crane was required to lift the material from the kerbside up to the roof terrace. As you can imagine, this is no

easy feat to achieve in central London but, again, the close collaboration between the AliDeck and IET teams made for a smooth and successful operation.

The required build-up height was 50mm, and a 30mm aluminium box section with our 20mm Junior Board satisfied this and proved a cost-effective solution. The decking boards run front to back on the terrace with a space of 2mm between the ends of each board to allow for expansion under summer temperatures. The box section runs every 400mm on top of the existing steel framework to provide stable support.





Bespoke details easily achieved with versatile aluminium decking system

A notable bespoke feature for this project was the use of 35 unique access hatches. These were required to allow access to electrical points and other vital infrastructure located under the terrace decking. It was essential that easy access for engineers be available should any electrical issues or other maintenance requirement arise.

To create these hatches, the installation team precisely cut our non-combustible decking boards to size and fixed to short lengths of the aluminium box section. A simple slanted cut to the ends of the box sections allows for easy opening.

Another unique feature to the terrace is the addition of LED uplights in the decking boards, creating atmospheric lighting for evening events. These bespoke lights are sited in the central fixings channel in the boards. Instead of using the board's clip the entire length of the fixing channel to conceal the fixings, the installation team instead used short lengths of semi-opaque plastic to allow light to pass

through from installed LED strips. The effect is really quite something and it's great to see the versatility of our products demonstrated in such a striking way.

The refurbishment of the terrace area and the removal of the combustible materials has delivered a fire-safe solution that will last for a minimum of 60 years, proving a future-proof and cost-effective investment.

An excellent level of workmanship has resulted in a fantastic outcome for all stakeholders involved in such a prestigious project, which is of course the only acceptable outcome when partnering with AliDeck as we ensure that project success is built into all aspects of our products and operations. We're delighted with the transformation we have seen to the IET London: Savoy Place roof terrace. Having been deeply invested in this project for over a year it's really heart-warming to see it all come together so well. Hats off to the IET team for a job well done!



➔ If you would like to find out more or to discuss an upcoming remediation project, please call **01622 534 042** or email **info@alideck.co.uk**.

AliDeck partner with **Extreme Steel** on **€25m Twinlite Project** in Dublin, Ireland, with Flat Board used on curved balconies



AliDeck are fortunate to be partnering once more with the team at Extreme Steel, widely established Steel Fabrication experts who specialise in the installation of mild steel, stainless steel and aluminium balconies, balustrades and associated products, on the exciting Twinlite project in Dalkey, South Dublin. The residential development project will see a projected €25m worth of investment.

Extreme Steel approached AliDeck for assistance in the design phase of an array of curved balconies, with the main challenge being the inclusion of a water management system. In addition to creating renders for greater visualisation, we recommended specifications that would be aesthetically pleasing and allow for hassle-free installation.

AliDeck made a trip to Ireland to confirm our confidence that the proposal would meet all client expectations and providing Extreme Steel with the opportunity to learn more about our products so that we could collaborate closely in the future and deliver project success. It was agreed that AliDeck would supply our Junior Flat Board along with our 20mm Drainage Channel and Junior Access Wide Gutter to create a cost-effective solution.

Developer Rick Larkin's Twinlite project will provide a total of 64 two bedroom units, 26 one bedroom units, and 11 studio apartments that are complemented by stylish curved balconies or terrace area to provide leaseholders with luxurious outdoor living space. It will also play host to a playground to support the adjacent Castle Park school.

We look forward to following this project closely and working with Extreme Steel on further projects throughout 2023.

If you would like to discuss the benefits of using aluminium balcony decking for any of your future projects with AliDeck, please contact us **01622 534 038** or email us at **info@alideck.co.uk**.



CREATING PROJECT SUCCESS

PROJECT SUCCESS **BUILT-IN**

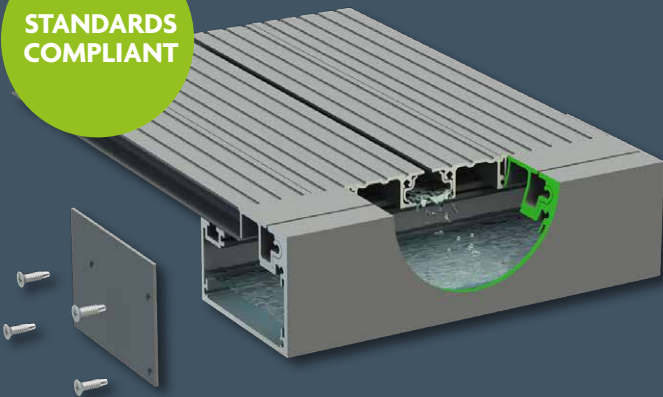
ALIDECK **JUNIOR** BALCONY BOARD

The 20mm AliDeck Junior Board is our most popular decking board, available in ridged and flat specification. Spanning up to 800mm, the cost-effective Junior Board requires less underside support than traditional decking and is non-combustible.

IDEAL FOR
REMEDICATION
PROJECTS



STANDARDS
COMPLIANT



ALIDECK BALCONY **DRAINAGE SYSTEM**

This innovative drainage solution delivers positive drainage to balconies, with our Drainage Channel between the deck boards capturing and directing water to the Drainage Gutter for controlled evacuation to a specified outlet.
Contact us for site specific flow rate calculations.



A2-s1, d0 & A2fl-s1
Fire Rated



6063 T6
Aluminium



Slip, Heat, Wear
Resistant



30 Year
Warranty

ALIDECKTM
Aluminium Decking

01622 534 089 | info@alideck.co.uk
www.alideck.co.uk



USES INCLUDE:
Balconies • Walkways
Bridges • Steps • Terraces
Commercial Areas
Raised Platforms



Europa & Jenner House
1-2 Trident Close
Medway City Estate
Rochester, ME2 4ER

Tel: **01622 235 672**
Email: info@alideck.co.uk
www.alideck.co.uk