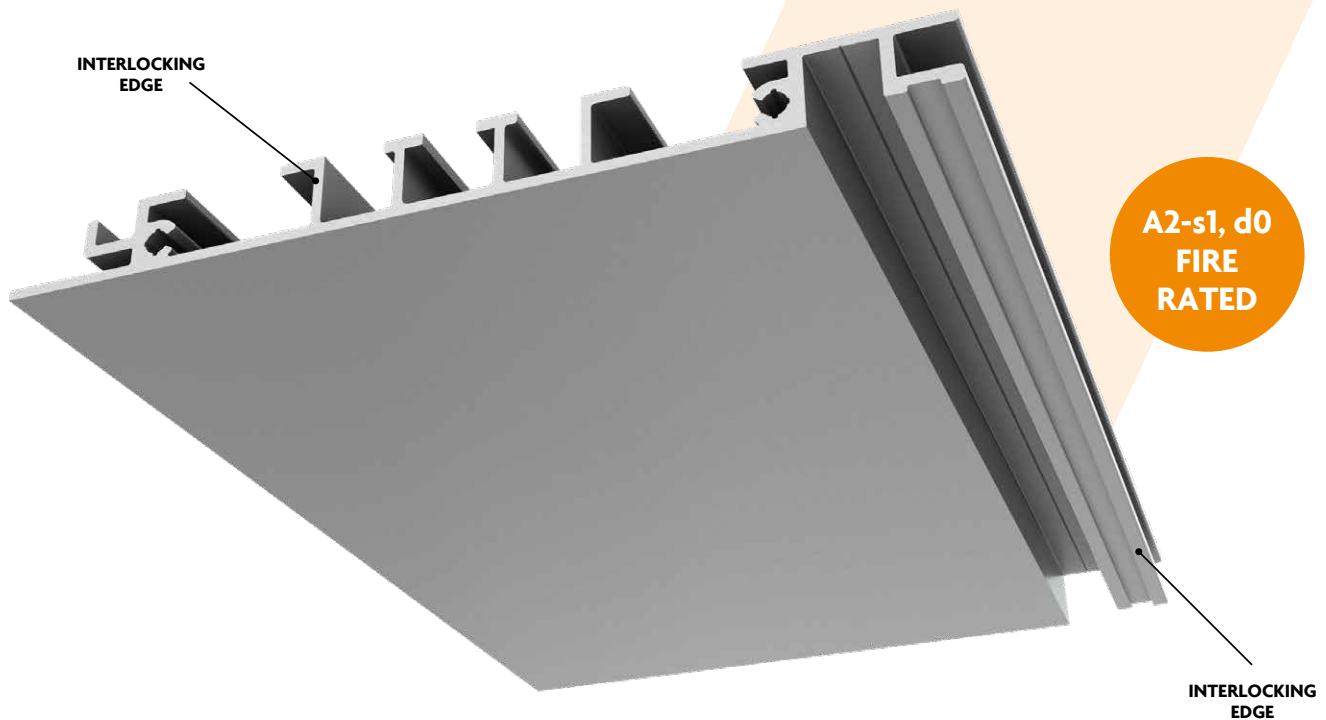


# ALICLAD FLOW

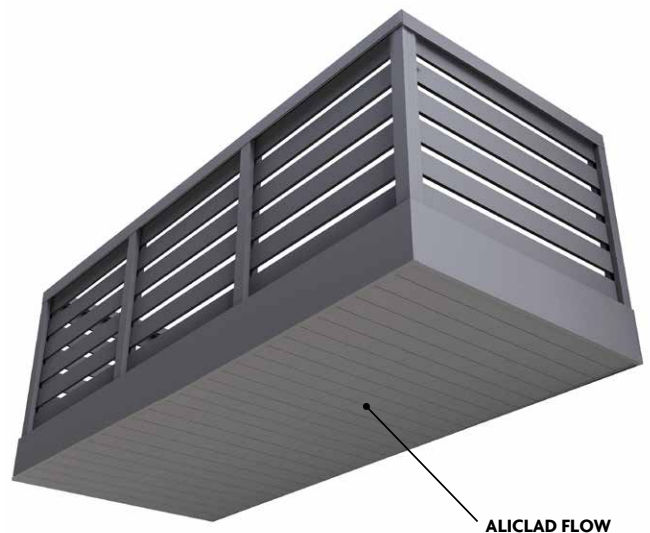
## Specification Datasheet

A non-combustible, quick-fit aluminium balcony soffit cladding system.



## Benefits include:

- Fire Resistant to A2-s1, d0
- Span 1.5m
- Standard Stock Lengths 6m
- 30 Year Warranty
- Life Expectancy 60 years
- Material 6063 T6 Structural Grade Aluminium
- Available in the full range of AliDeck colours



All AliClad products have been independently tested for fire performance to BS EN 13823, BS EN 13501, and BS EN ISO 1716; for loading performance to BS 6180; for deflection performance to BS 8118, BS 6399, and BS 1991; for wind performance to BS 1991.

# Product Specification

- Fire resistant: A2-s1, d0 when coated
- The weight of the AliClad Flow cladding board is 1.281 kg per linear M.
- Coating thickness - 60-80 microns
- Impact test - with an energy of 2.5KJ to ensure that the coating adheres to the substrate to EN ISO 6272 / ASTM D2794
- Bend test - on 5mm mandrel to ensure adhesion after bending to EN ISO 1519
- Machu Test (accelerated corrosion test) - in a solution made up of sodium chloride acetic acid and hydrogen peroxide at 37degrees C Duration 48 hours
- Qualicoat 2.4.1. - cross hatch cuts are made at 2mm spacings with one being at 90 degrees to the other cut, tape is applied left for 2 minutes and removed to check for adhesion of paint (EN ISO 2409 2013)
- Qualicoat 2.18 - sawing and drilling test to ensure no flaking after cutting (using sharp tools)
- Acid salt spray test - ISO 9227
- EN ISO 3231 - Resistance to humid atmospheres containing Sulphur Dioxide
- EN ISO 11341 - Accelerated weathering test
- EN ISO 20810 - Natural weathering test (Florida Test) (Carried out on Powder Type)
- EN ISO 12206-1 - Resistance to mortar (Carried out on powder type)
- EN ISO 6270 - 2 - Constant climate condensation water test.
- Choice of colour - shown opposite. Other colours are available on request.

## Protective Finish

The planks are coloured using the Qualicoat powder coating finish. Qualicoat is a quality label organisation committed to maintaining and promoting the quality of coating on aluminium and its alloys for architectural applications.

## Installation

The AliClad system is designed for easy installation. Full installation guides are available on [www.alideck.co.uk](http://www.alideck.co.uk).

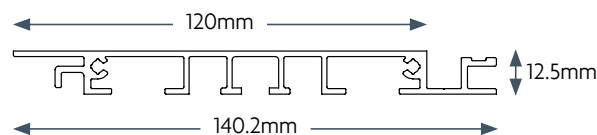
## Dimensions

### INDIVIDUAL BOARDS:

**Length:** 6 metres

**Width:** 120mm

**Depth:** 12.5mm



The boards can be cut to size along both the length and width

**Maximum Overall Area:** Unlimited  
**Allowable Span:** 1200mm on 4kN load

## Construction

AliClad is constructed completely from 100% aluminium (6063 T6 grade), up to 30% of which has been recycled to make these boards eco-friendly and much better for the environment.

## Maintenance

Due to the fact that AliClad is aluminium and finished using the 5 stage Qualicoat system, little or no maintenance is required. General grime can be removed simply with a damp, lint free cloth or mop with warm soapy water.

## Colour Options

AliClad Flow is available in our full range of standard colours. Please refer to our Standard Colour Range datasheet for colour options (available at [www.alideck.co.uk/downloads](http://www.alideck.co.uk/downloads)).

Non-standard colours are available on request as special orders, but may affect cost and lead-time. AliClad Decor can be supplied non-coated/mill finish to achieve A1 fire rating.



## Warranty

The cladding is supplied with a **30 year warranty** against splitting, cracking, warping, splintering, rotting, twisting and material or manufacturing defects. It has a minimum **60 year life expectancy**.



**ALL ALUMINIUM**



**HEAT RESISTANT**



**DURABLE TEXTURED FINISH**



**LOW MAINTENANCE**



**RECYCLABLE**



**STABLE IN ALL WEATHER CONDITIONS**



**A2-s1, d0 FIRE RATED**

Rochester Airport Trading Estate  
27 Laker Road  
Rochester  
Kent ME1 3QX

Tel: 01622 235 672  
Email: [info@alideck.co.uk](mailto:info@alideck.co.uk)  
[www.alideck.co.uk](http://www.alideck.co.uk)

**ALICLAD**  
Non-Combustible Cladding Systems