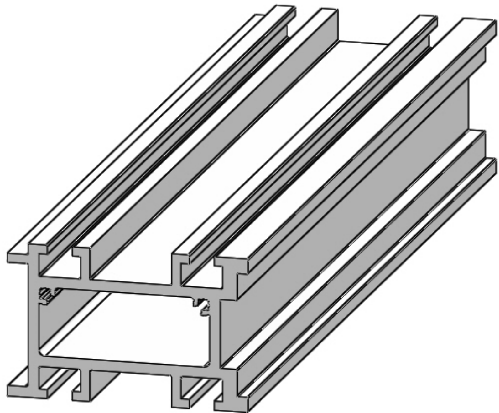
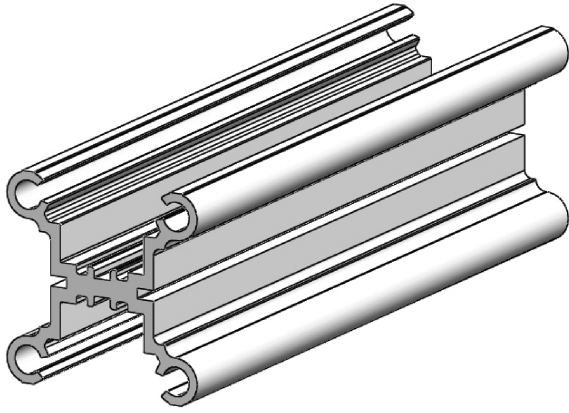


(AliRail System With Aluminium Infill Panels) - (Installation Guide)

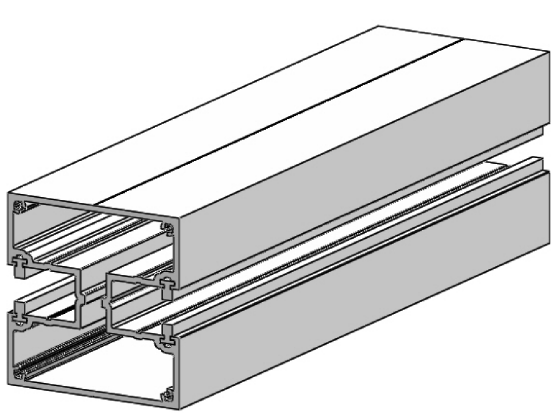
A. Base Rail



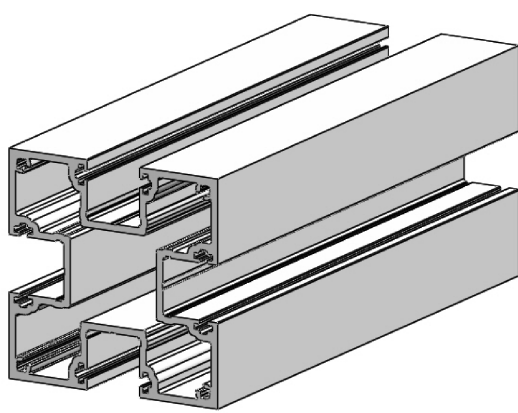
B. Inter Post



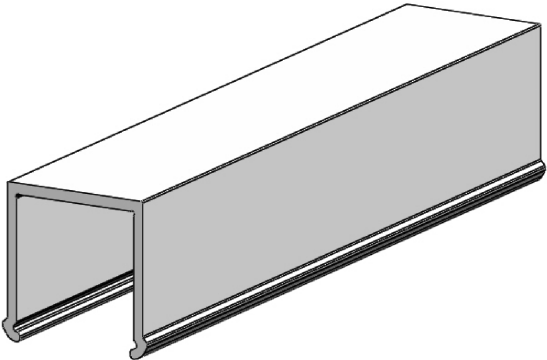
C. Intermediate Post



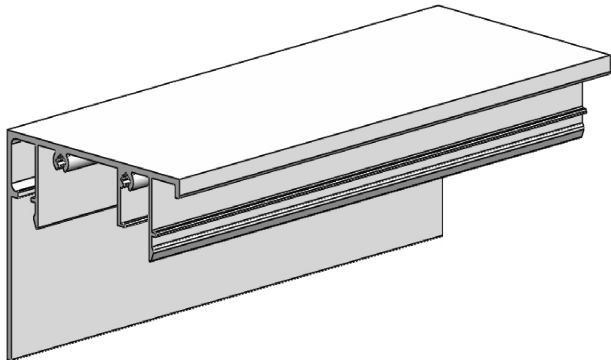
D. Corner Post



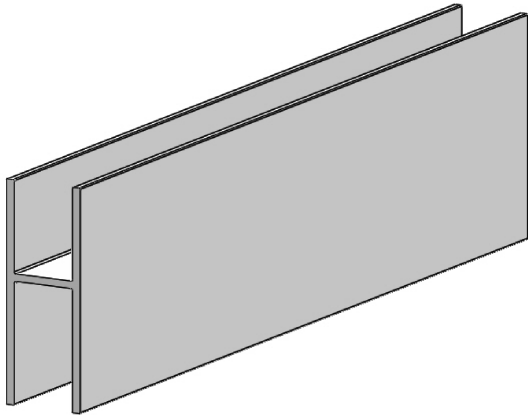
E. Post Trim



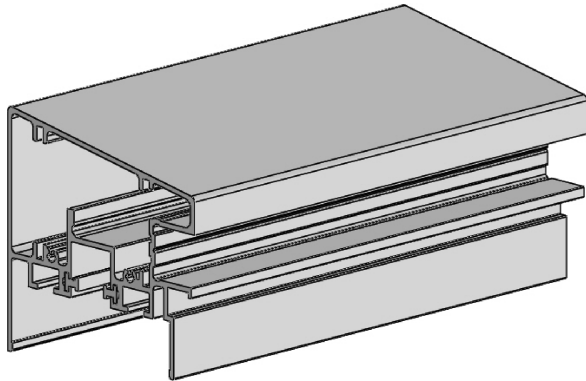
F. Base Rail Cover



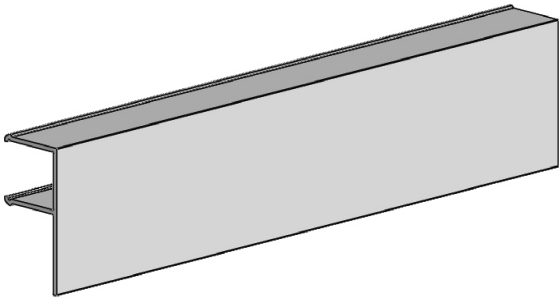
G. Bottom Rail



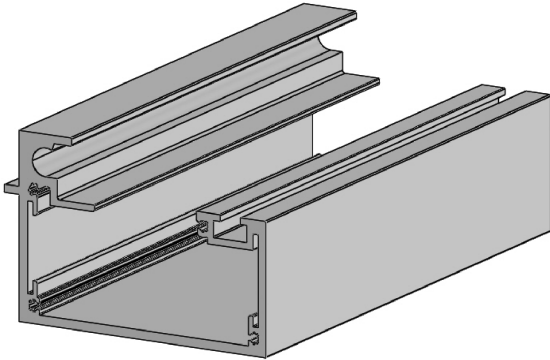
H. Hand Rail



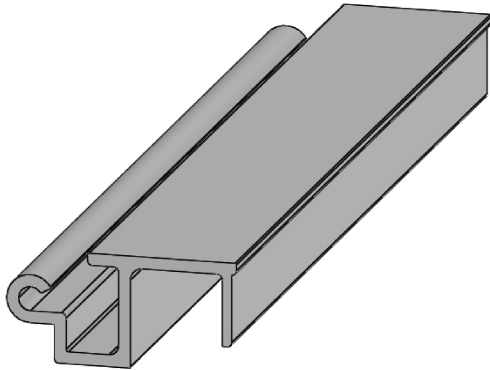
I. Hand Rail Trim



J. Access Gutter



K. Access Cover



Notes.
This is an example balcony, the options are configurable.

Customer Sign Off.

Sign _____

Date _____

Record Of Revision Changes.

1. Creation of drawing (V1)

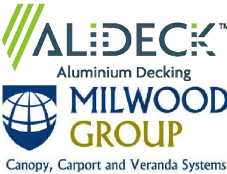
Colour; Any standard RAL colour

Delivery and Storage.
When components are delivered please ensure they are inspected and stored flat, also please ensure they are stored out of the sun. Do not store components upright.

Product Details:
Example Balcony Size 3.5 metres x 1.5 metre

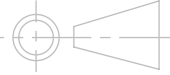


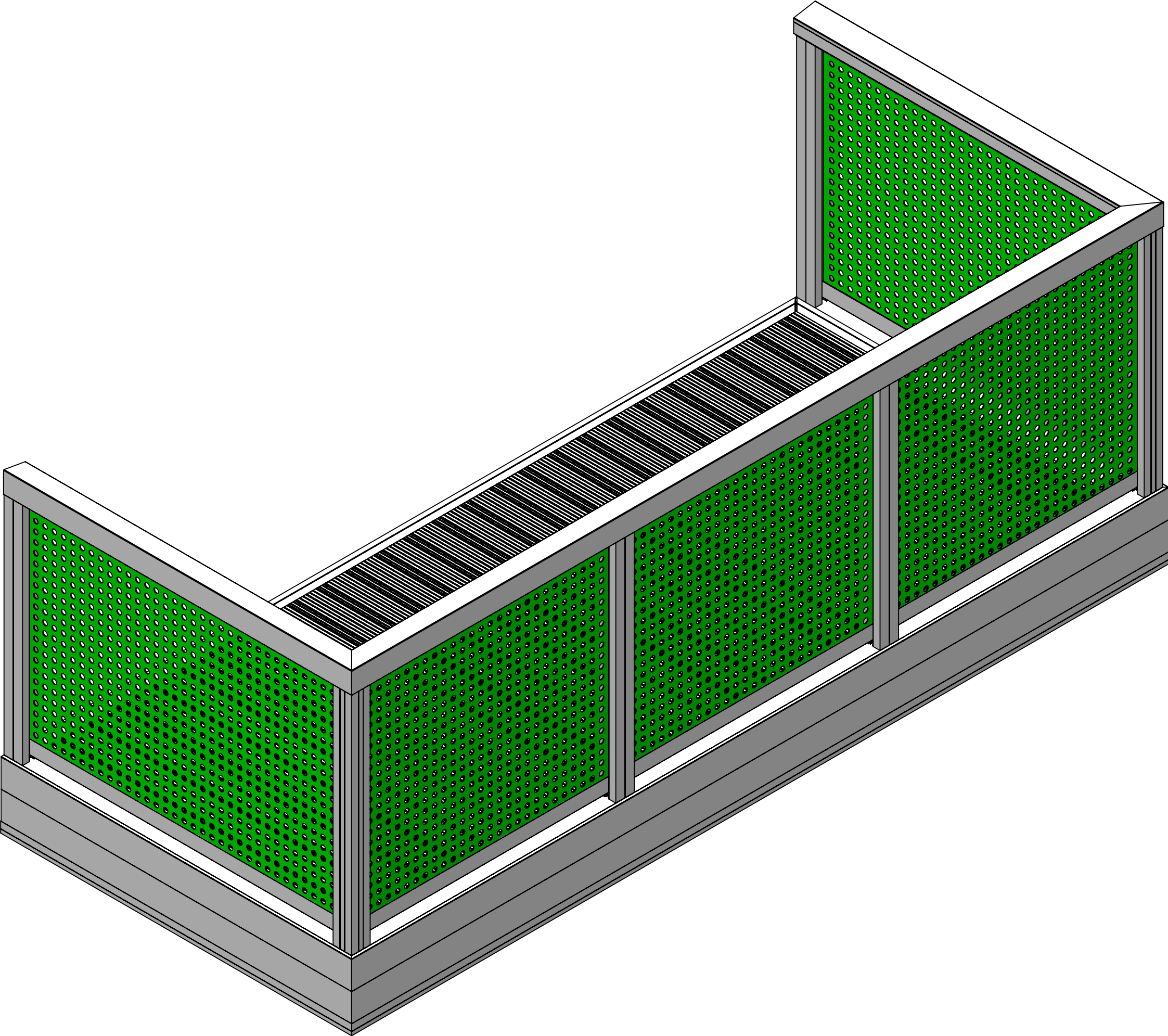
From
This drawing and the product it displays is the sole property of The Milwood Group & Alideck any reproduction of this drawing or product without the written permission of The Milwood Group & Alideck is prohibited.



Drawing Title:
(AliRail System With Aluminium Infill Panels) - (Installation Guide)

Product:
AliRail Profile

Date 21-11-20	Page Size A3 (L)	Scale DNS	Drawn Shyam
Issuer MIL	Sequence 000001	(Tol) +/- 1mm	Rev V1
If In any doubt about details on this drawing call us on 01622 235 672	 3rd Angle Projection	Finish PPC	Page 1 of 14



Note: Fixings to use are M8 Stainless Steel Bolts, Nuts and Washers, 4mm no. 8 Stainless Steel Screws and Self-Drilling Screws if required.

Notes.
This is an example balcony, the options are configurable.

Customer Sign Off.

Sign _____

Date _____

Record Of Revision Changes.

1. Creation of drawing (V1)

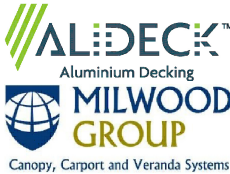
Colour; Any standard RAL colour

Delivery and Storage.
When components are delivered please ensure they are inspected and stored flat, also please ensure they are stored out of the sun. Do not store components upright.

Product Details:
Example Balcony Size 3.5 metres x 1.5 metre

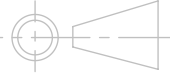


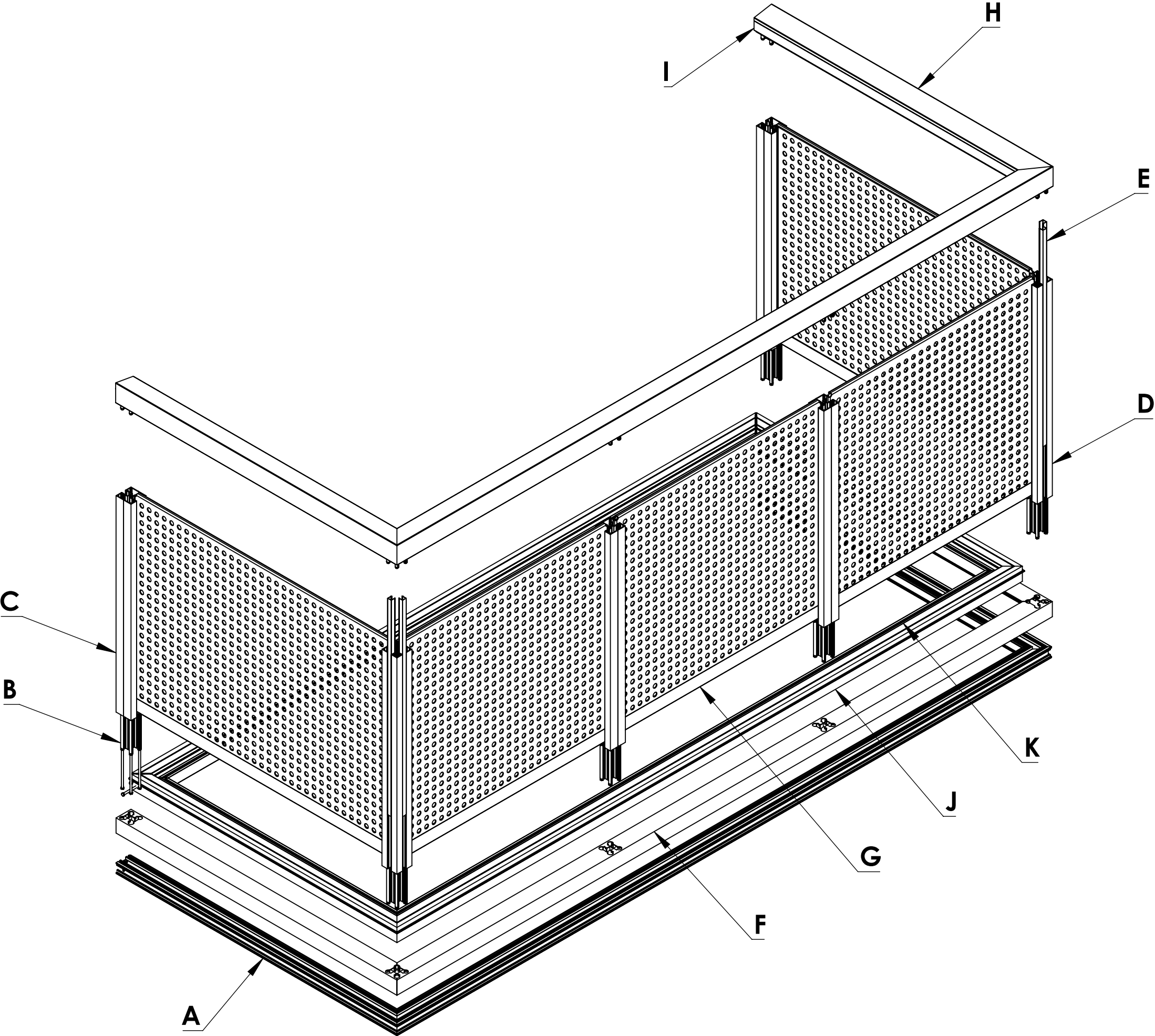
From
This drawing and the product it displays is the sole property of The Milwood Group & Alideck any reproduction of this drawing or product without the written permission of The Milwood Group & Alideck is prohibited.



Drawing Title:
(AliRail System With Aluminium Infill Panels)
- (Installation Guide)

Product:
AliRail Profile

Date 21-11-20	Page Size A3 (L)	Scale DNS	Drawn Shyam
Issuer MIL	Sequence 000001	(Tol) +/- 1mm	Rev V1
If In any doubt about details on this drawing call us on 01622 235 672	 3rd Angle Projection	Finish PPC	Page 2 of 14



EXPLODED VIEW

Notes.
This is an example balcony, the options are configurable.

Customer Sign Off.

Sign _____

Date _____


Record Of Revision Changes.

1. Creation of drawing (V1)

Colour; Any standard RAL colour


Delivery and Storage.
When components are delivered please ensure they are inspected and stored flat, also please ensure they are stored out of the sun. Do not store components upright.

Product Details:
Example Balcony Size 3.5 metres x 1.5 metre




Modular Balustrade Systems

From



Aluminium Decking



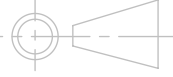
MILWOOD GROUP

Canopy, Carport and Veranda Systems

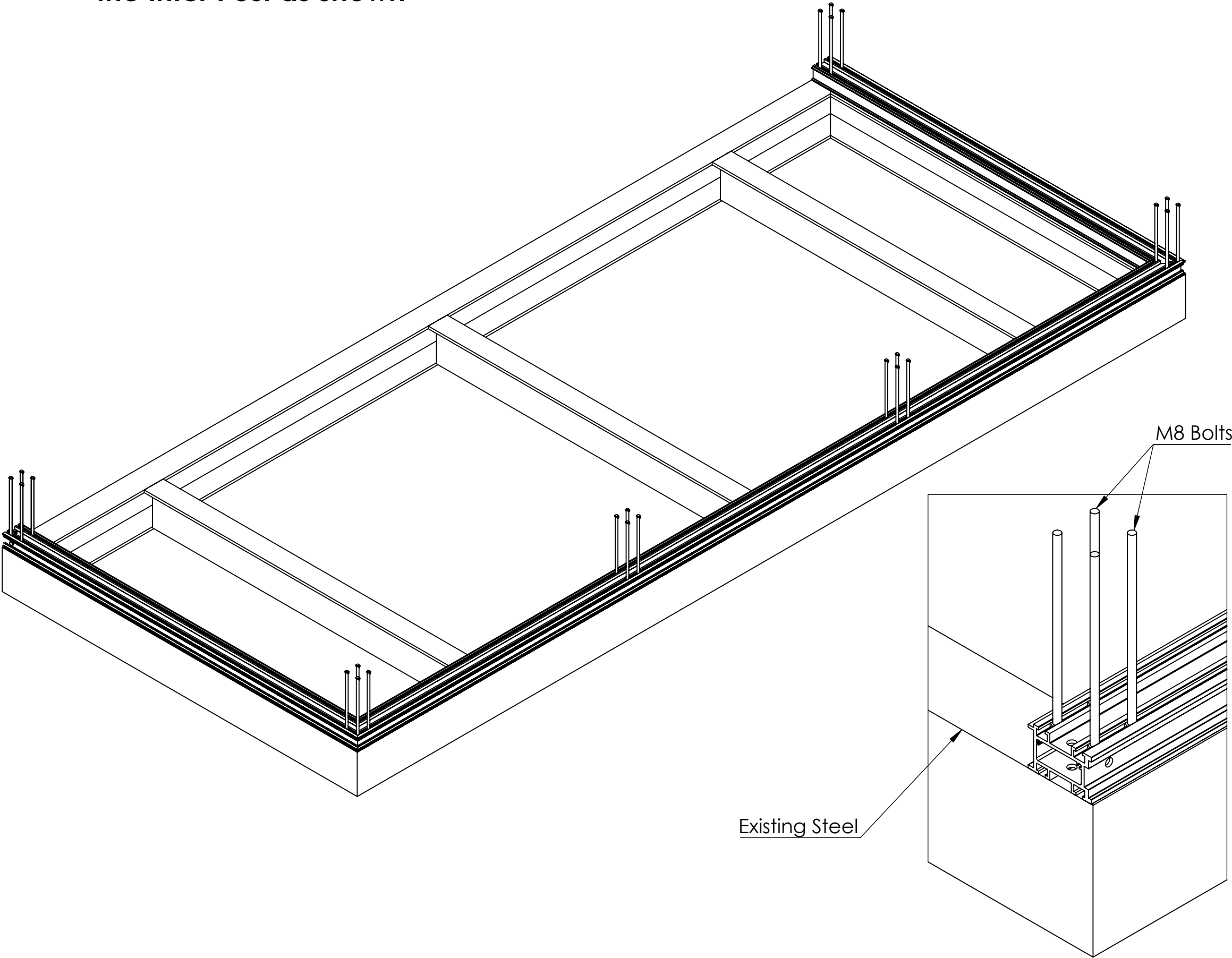
This drawing and the product it displays is the sole property of The Milwood Group & Alideck any reproduction of this drawing or product without the written permission of The Milwood Group & Alideck is prohibited.

Drawing Title:
(AliRail System With Aluminium Infill Panels) - (Installation Guide)

Product:
AliRail Profile

Date 21-11-20	Page Size A3 (L)	Scale DNS	Drawn Shyam
Issuer MIL	Sequence 000001	(Tol) +/- 1mm	Rev V1
If In any doubt about details on this drawing call us on 01622 235 672	 3rd Angle Projection	Finish PPC	Page 3 of 14

Step 1 : Insert 200mm M8 Bolts into the Base Rail Bolt Channels to attach the Inter Post as shown



Notes.
This is an example balcony, the options are configurable.

Customer Sign Off.

Sign _____

Date _____


Record Of Revision Changes.

1. Creation of drawing (V1)

Colour; Any standard RAL colour


Delivery and Storage.
When components are delivered please ensure they are inspected and stored flat, also please ensure they are stored out of the sun. Do not store components upright.

Product Details:
Example Balcony Size 3.5 metres x 1.5 metre




Modular Balustrade Systems

From



Aluminium Decking



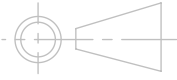
MILWOOD GROUP

Canopy, Carport and Veranda Systems

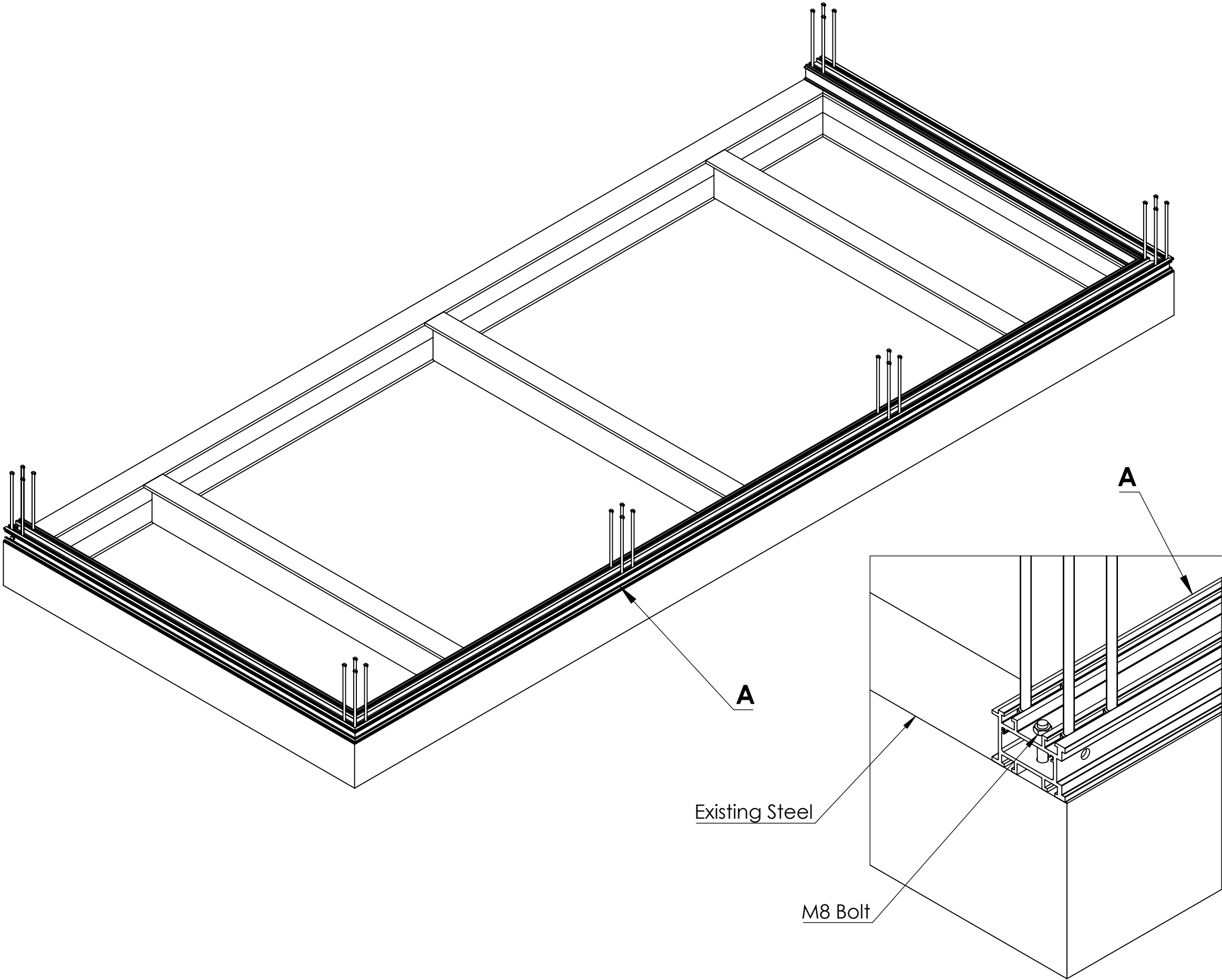
This drawing and the product it displays is the sole property of The Milwood Group & Alideck any reproduction of this drawing or product without the written permission of The Milwood Group & Alideck is prohibited.

Drawing Title:
(AliRail System With Aluminium Infill Panels)
- (Installation Guide)

Product:
AliRail Profile

Date 21-11-20	Page Size A3 (L)	Scale DNS	Drawn Shyam
Issuer MIL	Sequence 000001	(Tol) +/- 1mm	Rev V1
If In any doubt about details on this drawing call us on 01622 235 672	 3rd Angle Projection	Finish PPC	Page 4 of 14

Step 2 : Fix the Base Rail to the existing steel using M8 Bolt as shown



Notes.
This is an example balcony, the options are configurable.

Customer Sign Off.

Sign _____

Date _____


Record Of Revision Changes.

1.	Creation of drawing (V1)
----	--------------------------

Colour; Any standard RAL colour

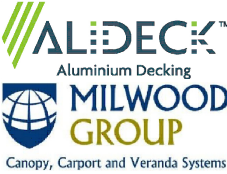
Delivery and Storage.
When components are delivered please ensure they are inspected and stored flat, also please ensure they are stored out of the sun. Do not store components upright.

Product Details:
Example Balcony Size 3.5 metres x 1.5 metre



Modular Balustrade Systems

From

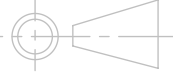


Aluminium Decking
MILWOOD GROUP
Canopy, Carport and Veranda Systems

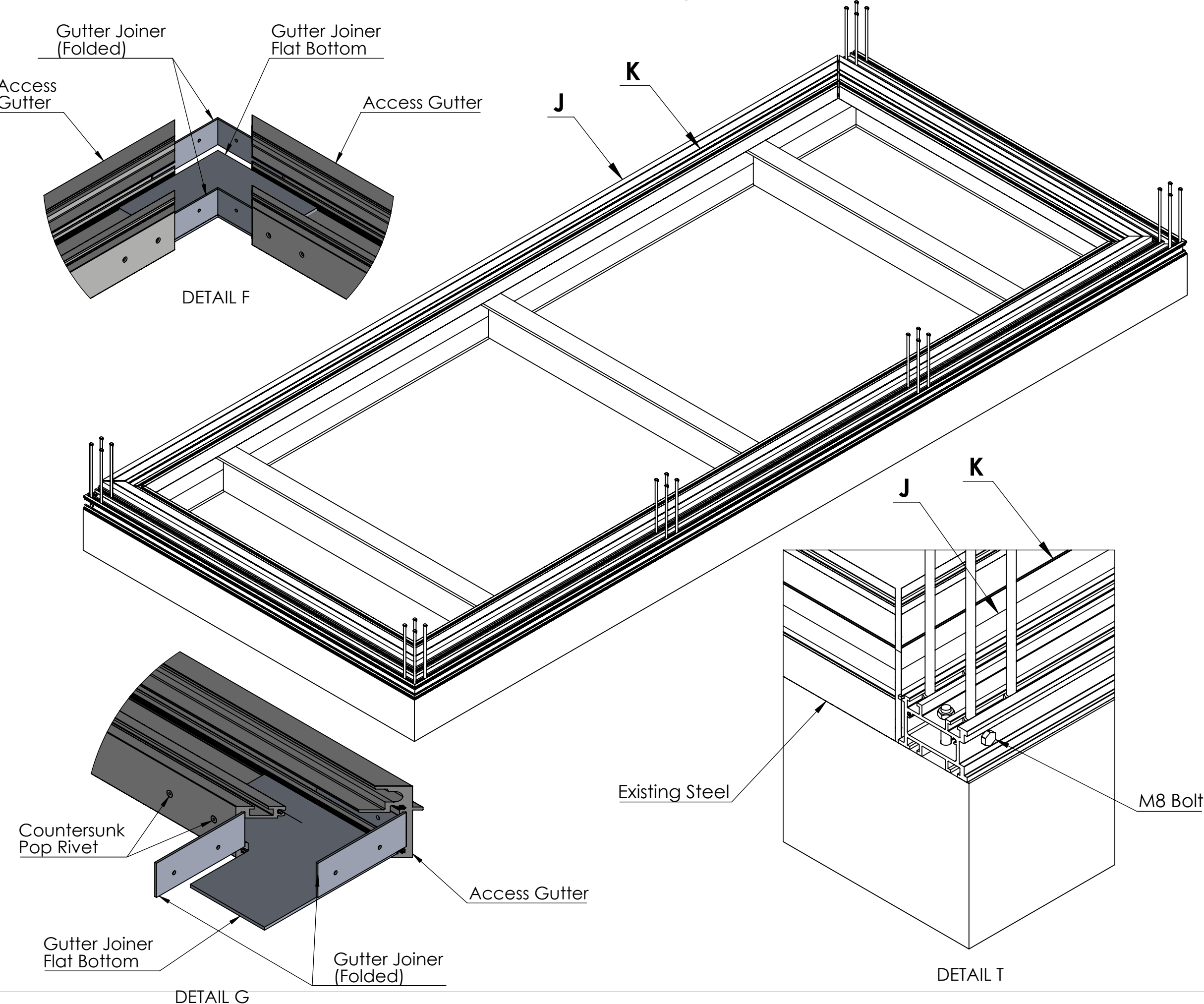
This drawing and the product it displays is the sole property of The Milwood Group & Alideck any reproduction of this drawing or product without the written permission of The Milwood Group & Alideck is prohibited.

Drawing Title:
(AliRail System With Aluminium Infill Panels)
- (Installation Guide)

Product:
AliRail Profile

Date 21-11-20	Page Size A3 (L)	Scale DNS	Drawn Shyam
Issuer MIL	Sequence 000001	(Tol) +/- 1mm	Rev V1
If In any doubt about details on this drawing call us on 01622 235 672	 3rd Angle Projection	Finish PPC	Page 5 of 14

Step 3 : Attach the Access Gutter to the Base Rail using M8 Bolt as shown



Notes.
This is an example balcony, the options are configurable.

Customer Sign Off.

Sign _____

Date _____


Record Of Revision Changes.

1. Creation of drawing (V1)

Colour; Any standard RAL colour


Delivery and Storage.
When components are delivered please ensure they are inspected and stored flat, also please ensure they are stored out of the sun. Do not store components upright.

Product Details:
Example Balcony Size 3.5 metres x 1.5 metre




Modular Balustrade Systems

From



Aluminium Decking




MILWOOD GROUP

Canopy, Carport and Veranda Systems

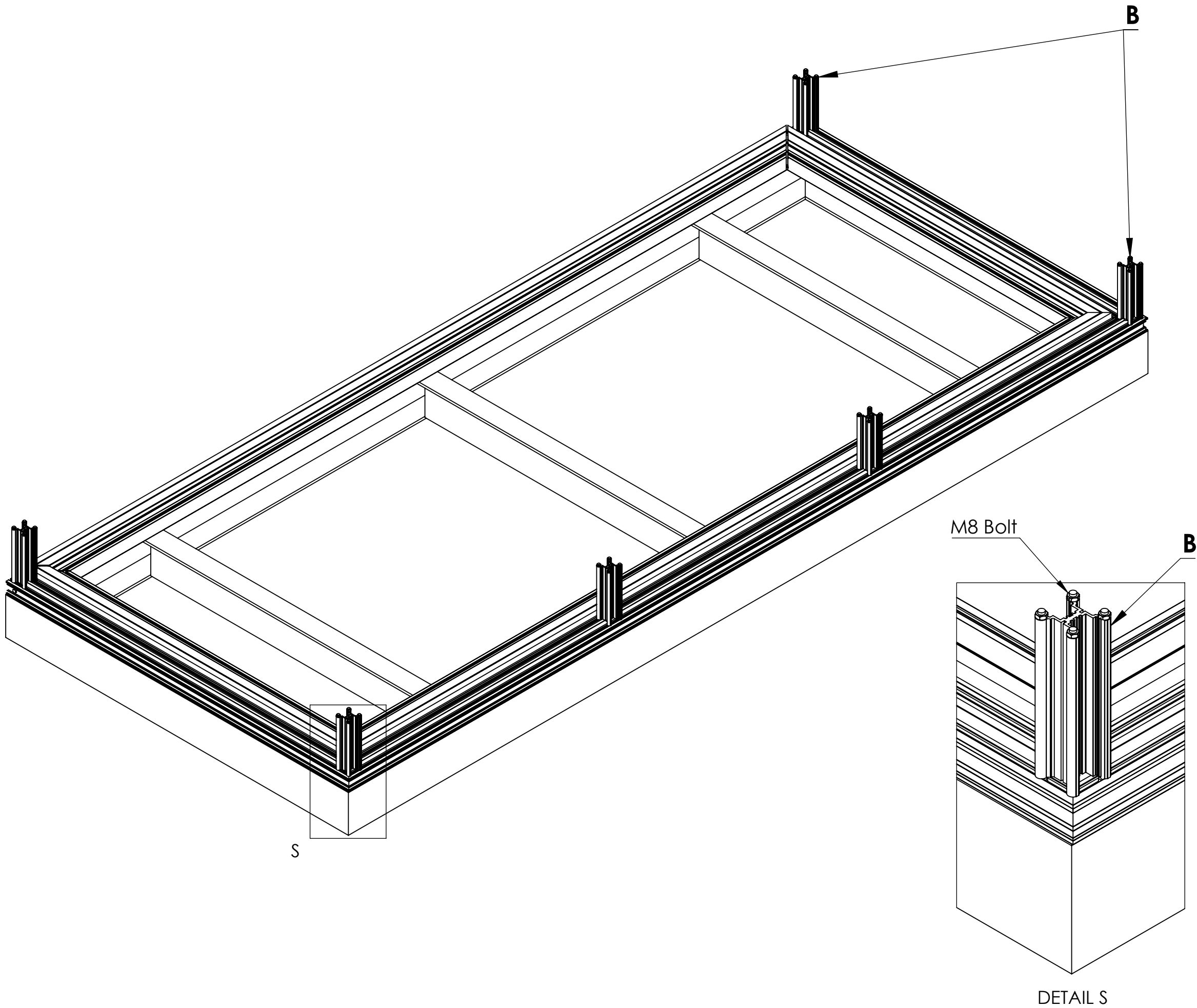
This drawing and the product it displays is the sole property of The Milwood Group & Alideck any reproduction of this drawing or product without the written permission of The Milwood Group & Alideck is prohibited.

Drawing Title:
(AliRail System With Aluminium Infill Panels) - (Installation Guide)

Product:
AliRail Profile

Date 21-11-20	Page Size A3 (L)	Scale DNS	Drawn Shyam
Issuer MIL	Sequence 000001	(Tol) +/- 1mm	Rev V1
If In any doubt about details on this drawing call us on 01622 235 672	 3rd Angle Projection	Finish PPC	Page 6 of 14

Step 4 : Attach the Inter Post to the Base Rail using M8 Bolt as shown



Notes.
This is an example balcony, the options are configurable.

Customer Sign Off.

Sign _____


Date _____

Record Of Revision Changes.	
1.	Creation of drawing (V1)

Colour; Any standard RAL colour


Delivery and Storage.
When components are delivered please ensure they are inspected and stored flat, also please ensure they are stored out of the sun. Do not store components upright.

Product Details:
Example Balcony Size 3.5 metres x 1.5 metre




Modular Balustrade Systems

From



Aluminium Decking

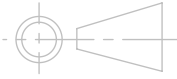


MILWOOD GROUP

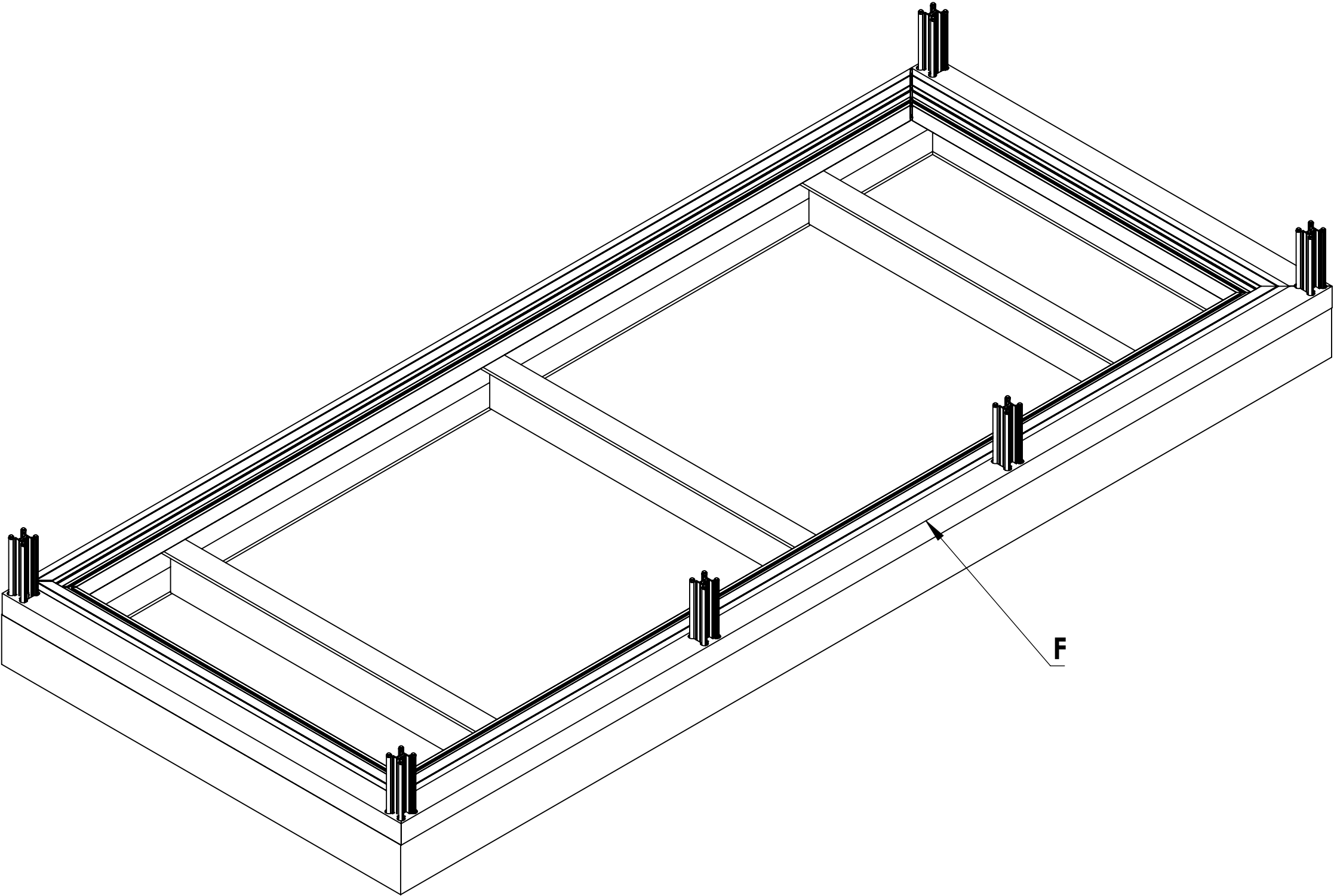
Canopy, Carport and Veranda Systems

This drawing and the product it displays is the sole property of The Milwood Group & Alideck any reproduction of this drawing or product without the written permission of The Milwood Group & Alideck is prohibited.

Drawing Title:
(AliRail System With Aluminium Infill Panels)
- (Installation Guide)

Product:			
AliRail Profile			
Date	Page Size	Scale	Drawn
21-11-20	A3 (L)	DNS	Shyam
Issuer	Sequence	(Tol)	Rev
MIL	000001	+/- 1mm	V1
If In any doubt about details on this drawing call us on 01622 235 672		Finish	Page
		PPC	7 of 14

Step 5 : Attach the Base Rail Cover to the Base Rail as shown



Notes.
This is an example balcony, the options are configurable.

Customer Sign Off.

Sign _____

Date _____


Record Of Revision Changes.

1. Creation of drawing (V1)

Colour; Any standard RAL colour


Delivery and Storage.
When components are delivered please ensure they are inspected and stored flat, also please ensure they are stored out of the sun. Do not store components upright.

Product Details:
Example Balcony Size 3.5 metres x 1.5 metre




Modular Balustrade Systems

From



Aluminium Decking



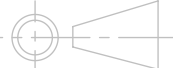
MILWOOD GROUP

Canopy, Carport and Veranda Systems

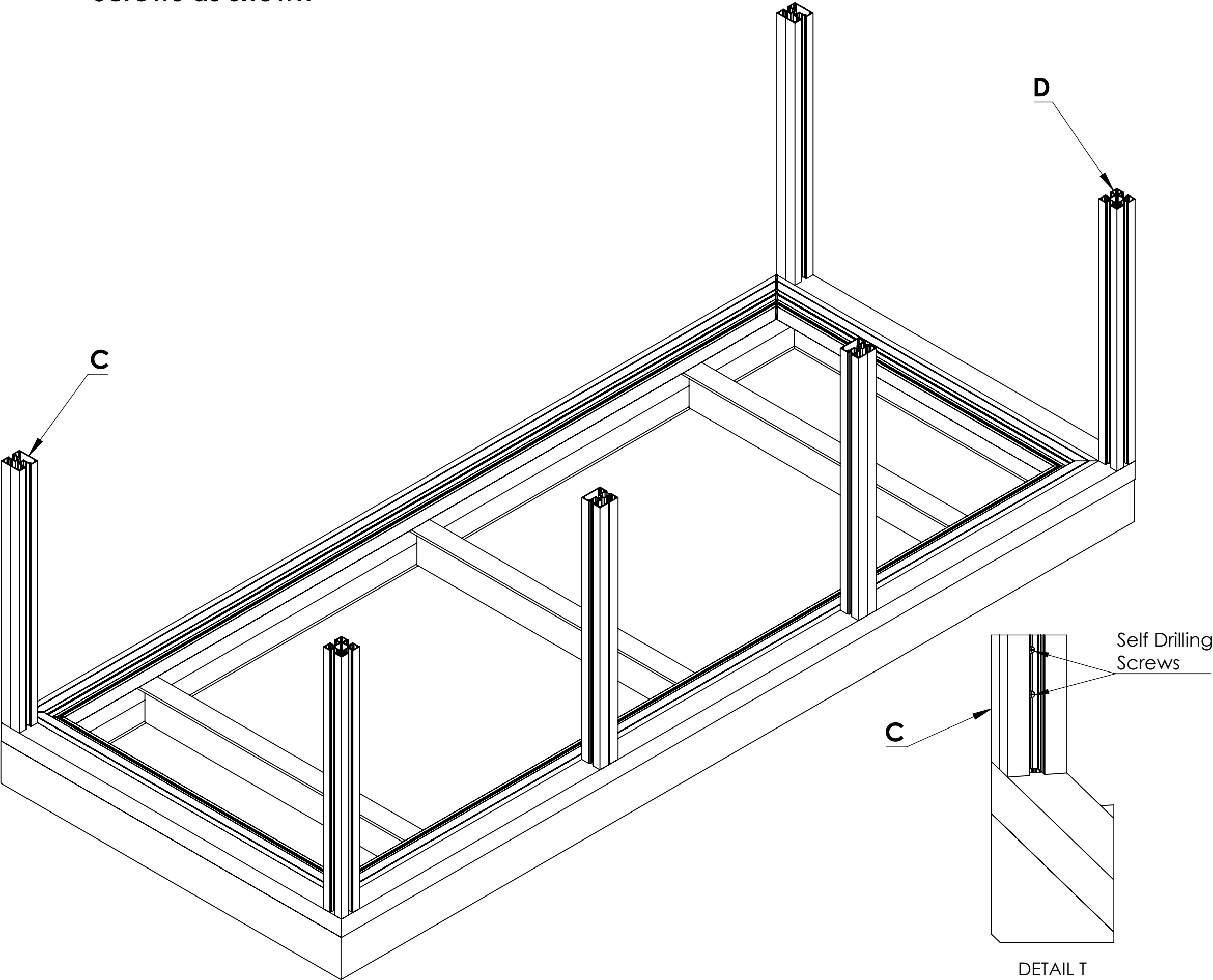
This drawing and the product it displays is the sole property of The Milwood Group & Alideck any reproduction of this drawing or product without the written permission of The Milwood Group & Alideck is prohibited.

Drawing Title:
(AliRail System With Aluminium Infill Panels)
- (Installation Guide)

Product:
AliRail Profile

Date 21-11-20	Page Size A3 (L)	Scale DNS	Drawn Shyam
Issuer MIL	Sequence 000001	(Tol) +/- 1mm	Rev V1
If In any doubt about details on this drawing call us on 01622 235 672	 3rd Angle Projection	Finish PPC	Page 8 of 14

Step 6 : Attach the Intermediate Posts & Corner Posts to the Inter Posts using Self Drilling Screws as shown



Notes.
This is an example balcony, the options are configurable.

Customer Sign Off.

Sign _____

Date _____


Record Of Revision Changes.

1. Creation of drawing (V1)

Colour; Any standard RAL colour

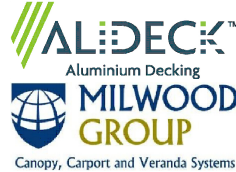
Delivery and Storage.
When components are delivered please ensure they are inspected and stored flat, also please ensure they are stored out of the sun. Do not store components upright.

Product Details:
Example Balcony Size 3.5 metres x 1.5 metre



ALIRAIL
Modular Balustrade Systems

From



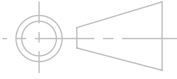
ALIDECK™
Aluminium Decking

MILWOOD GROUP
Canopy, Carport and Veranda Systems

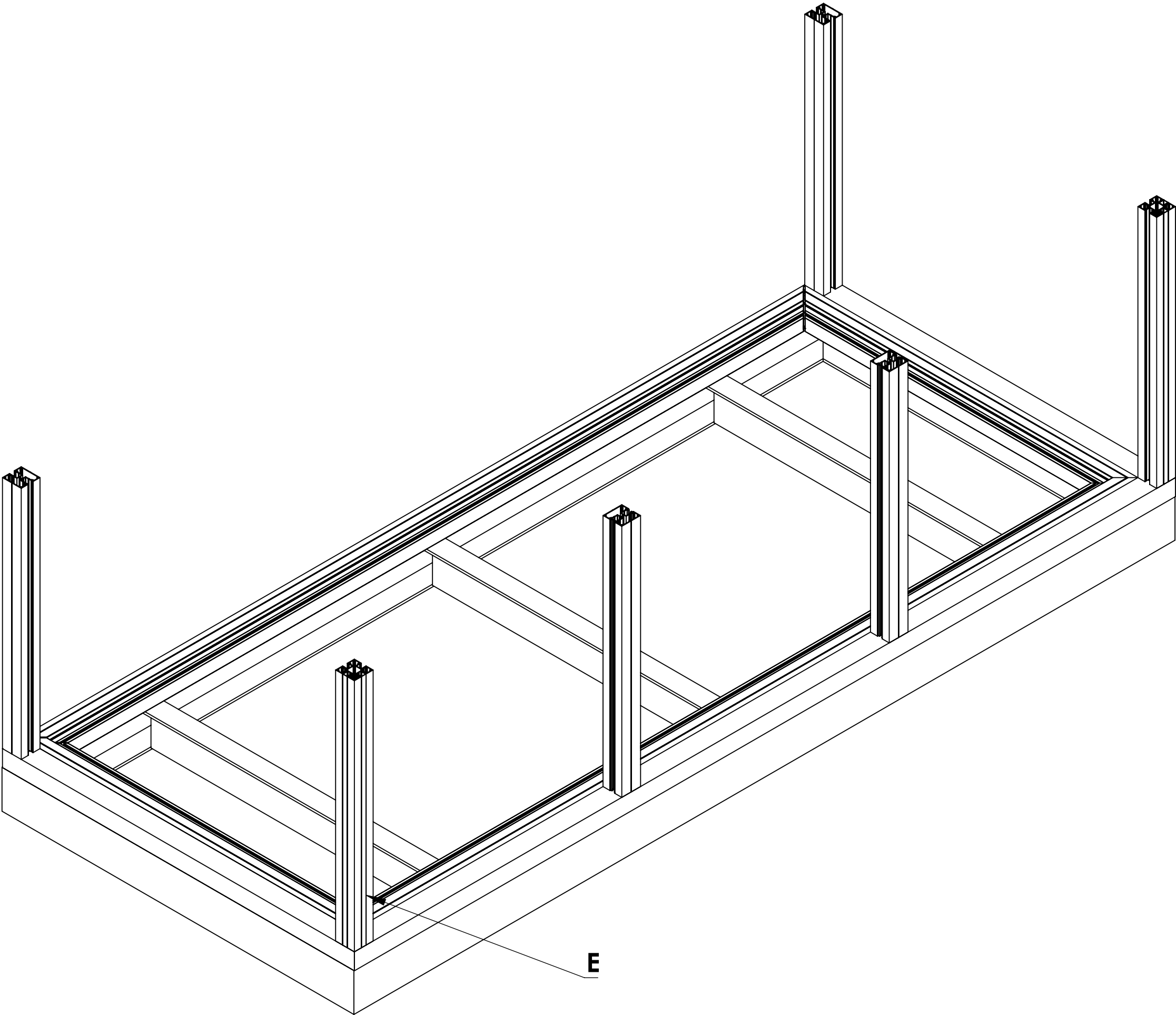
This drawing and the product it displays is the sole property of The Milwood Group & Alideck any reproduction of this drawing or product without the written permission of The Milwood Group & Alideck is prohibited.

Drawing Title:
(AliRail System With Aluminium Infill Panels) - (Installation Guide)

Product:
AliRail Profile

Date 21-11-20	Page Size A3 (L)	Scale DNS	Drawn Shyam
Issuer MIL	Sequence 000001	(Tol) +/- 1mm	Rev V1
If In any doubt about details on this drawing call us on 01622 235 672	 3rd Angle Projection	Finish PPC	Page 9 of 14

Step 7 : Attach the Post Trims to the Corner Posts as shown



Notes.
This is an example balcony, the options are configurable.

Customer Sign Off.

Sign _____

Date _____

Record Of Revision Changes.

1. Creation of drawing (V1)

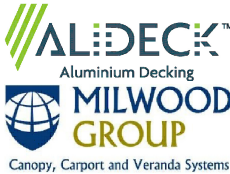
Colour; Any standard RAL colour

Delivery and Storage.
When components are delivered please ensure they are inspected and stored flat, also please ensure they are stored out of the sun. Do not store components upright.

Product Details:
Example Balcony Size 3.5 metres x 1.5 metre

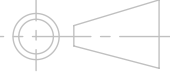


From
This drawing and the product it displays is the sole property of The Milwood Group & Alideck any reproduction of this drawing or product without the written permission of The Milwood Group & Alideck is prohibited.

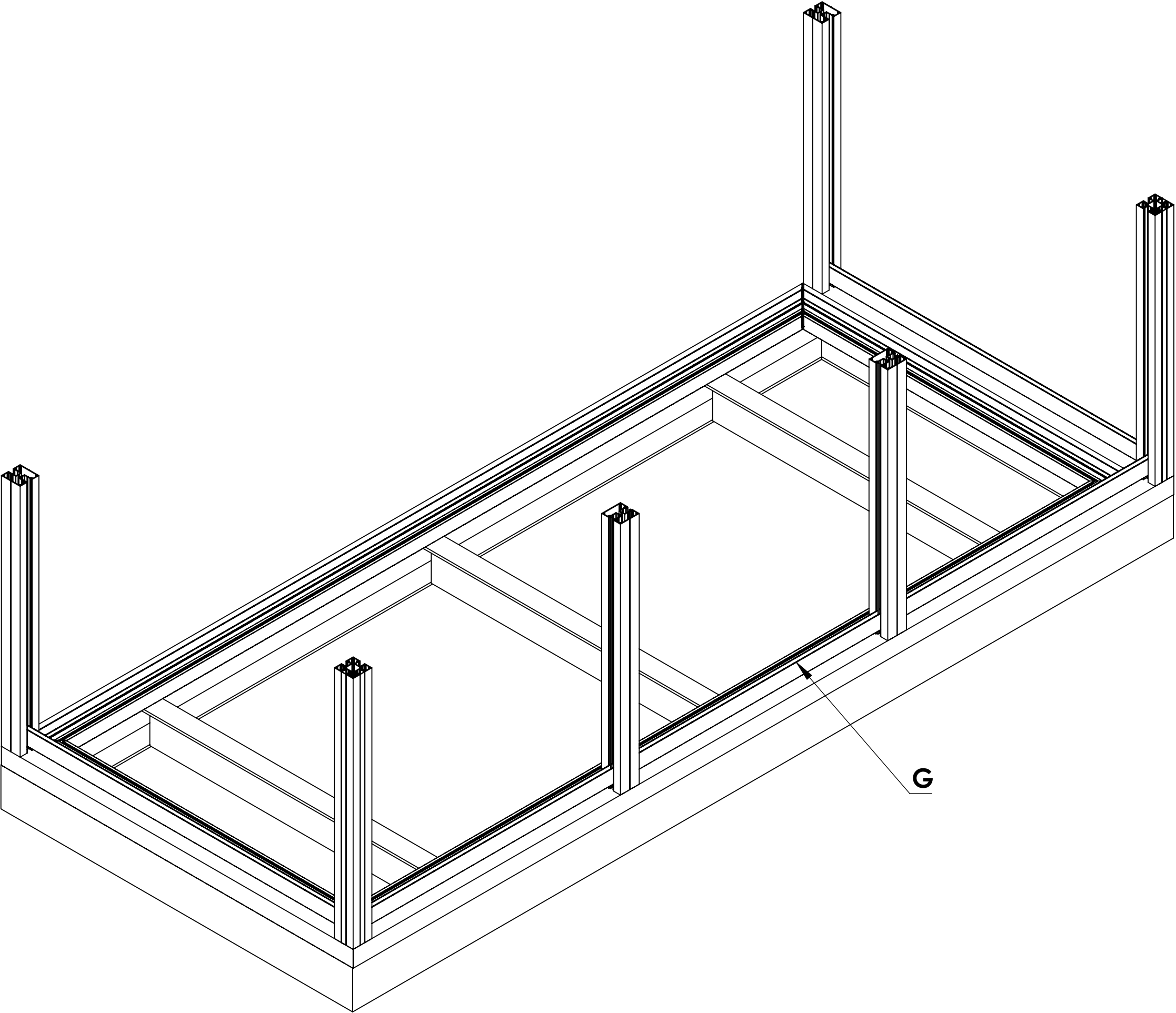


Drawing Title:
(AliRail System With Aluminium Infill Panels)
- (Installation Guide)

Product:
AliRail Profile

Date 21-11-20	Page Size A3 (L)	Scale DNS	Drawn Shyam
Issuer MIL	Sequence 000001	(Tol) +/- 1mm	Rev V1
If In any doubt about details on this drawing call us on 01622 235 672	 3rd Angle Projection	Finish PPC	Page 10 of 14

Step 8 : Now Attach the Bottom Rails to the Posts as shown



Notes.
This is an example balcony, the options are configurable.

Customer Sign Off.

Sign _____

Date _____


Record Of Revision Changes.

1. Creation of drawing (V1)

Colour; Any standard RAL colour


Delivery and Storage.
When components are delivered please ensure they are inspected and stored flat, also please ensure they are stored out of the sun. Do not store components upright.

Product Details:
Example Balcony Size 3.5 metres x 1.5 metre




Modular Balustrade Systems

From



Aluminium Decking



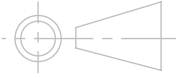
MILWOOD GROUP

Canopy, Carport and Veranda Systems

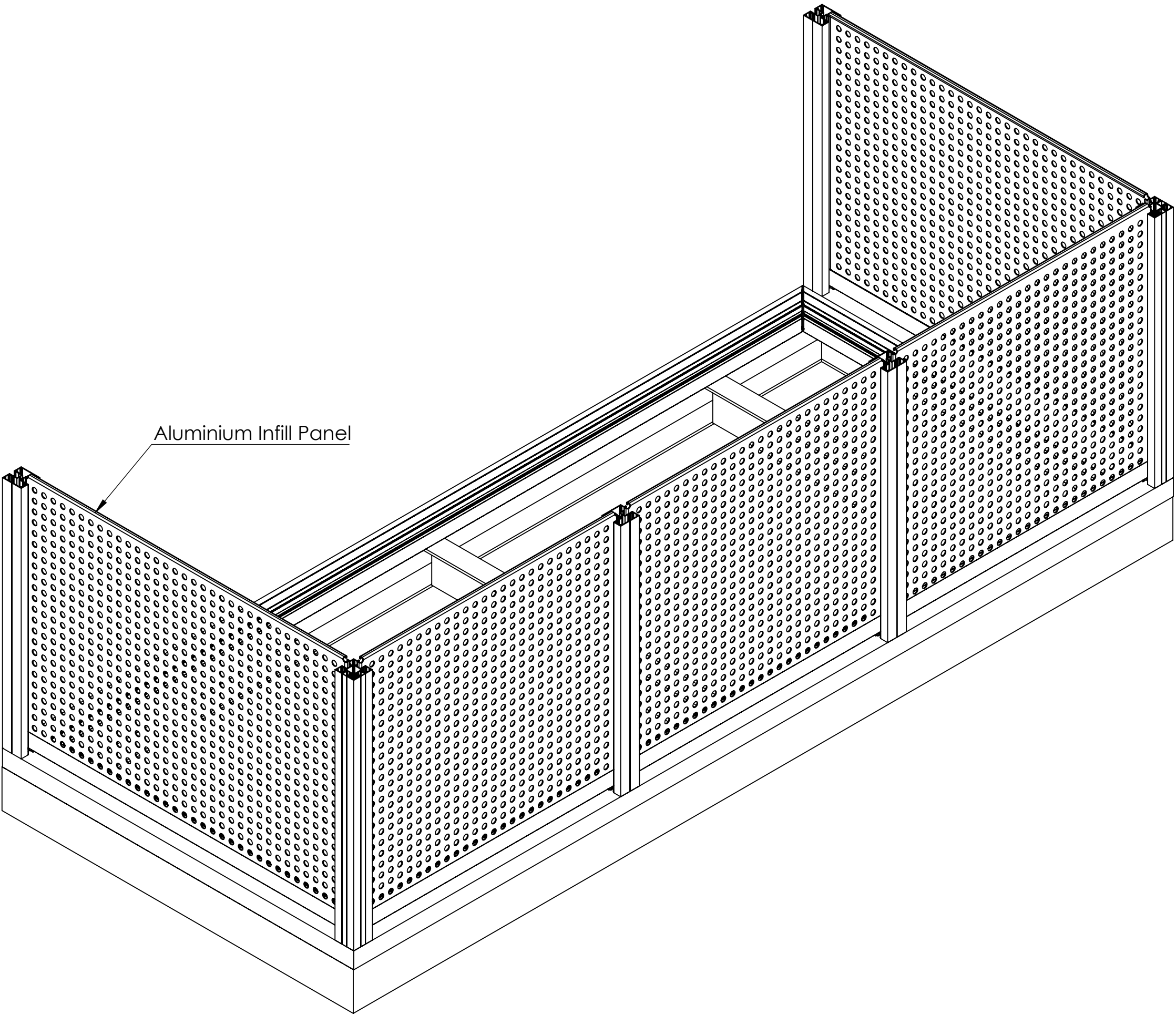
This drawing and the product it displays is the sole property of The Milwood Group & Alideck any reproduction of this drawing or product without the written permission of The Milwood Group & Alideck is prohibited.

Drawing Title:
(AliRail System With Aluminium Infill Panels) - (Installation Guide)

Product:
AliRail Profile

Date 21-11-20	Page Size A3 (L)	Scale DNS	Drawn Shyam
Issuer MIL	Sequence 000001	(Tol) +/- 1mm	Rev V1
If In any doubt about details on this drawing call us on 01622 235 672	 3rd Angle Projection	Finish PPC	Page 11 of 14

Step 9 : Now attach the Aluminium Infill Panels as shown



Notes.
This is an example balcony, the options are configurable.

Customer Sign Off.

Sign _____

Date _____


Record Of Revision Changes.

1. Creation of drawing (V1)

Colour; Any standard RAL colour


Delivery and Storage.
When components are delivered please ensure they are inspected and stored flat, also please ensure they are stored out of the sun. Do not store components upright.

Product Details:
Example Balcony Size 3.5 metres x 1.5 metre




Modular Balustrade Systems

From



Aluminium Decking



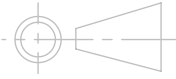
MILWOOD GROUP

Canopy, Carport and Veranda Systems

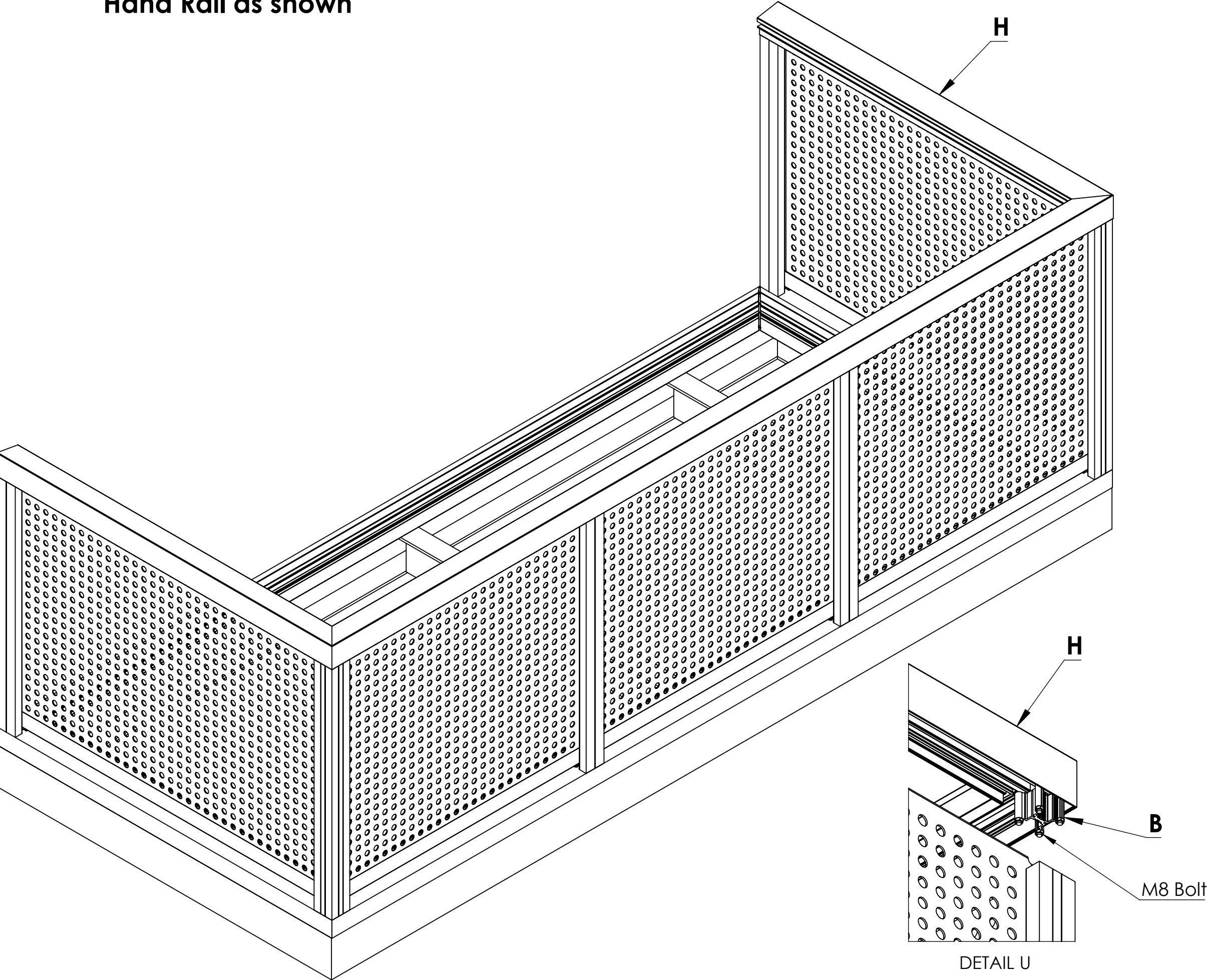
This drawing and the product it displays is the sole property of The Milwood Group & Alideck any reproduction of this drawing or product without the written permission of The Milwood Group & Alideck is prohibited.

Drawing Title:
(AliRail System With Aluminium Infill Panels)
- (Installation Guide)

Product:
AliRail Profile

Date 21-11-20	Page Size A3 (L)	Scale DNS	Drawn Shyam
Issuer MIL	Sequence 000001	(Tol) +/- 1mm	Rev V1
If In any doubt about details on this drawing call us on 01622 235 672	 3rd Angle Projection	Finish PPC	Page 12 of 14

Step 10 : Now attach the Hand Rail using a small section of Inter Post bolted with the Hand Rail as shown



Notes.
This is an example balcony, the options are configurable.

Customer Sign Off.

Sign _____

Date _____


Record Of Revision Changes.

1. Creation of drawing (V1)

Colour; Any standard RAL colour


Delivery and Storage.
When components are delivered please ensure they are inspected and stored flat, also please ensure they are stored out of the sun. Do not store components upright.

Product Details:
Example Balcony Size 3.5 metres x 1.5 metre




Modular Balustrade Systems

From



Aluminium Decking

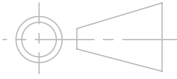


MILWOOD GROUP

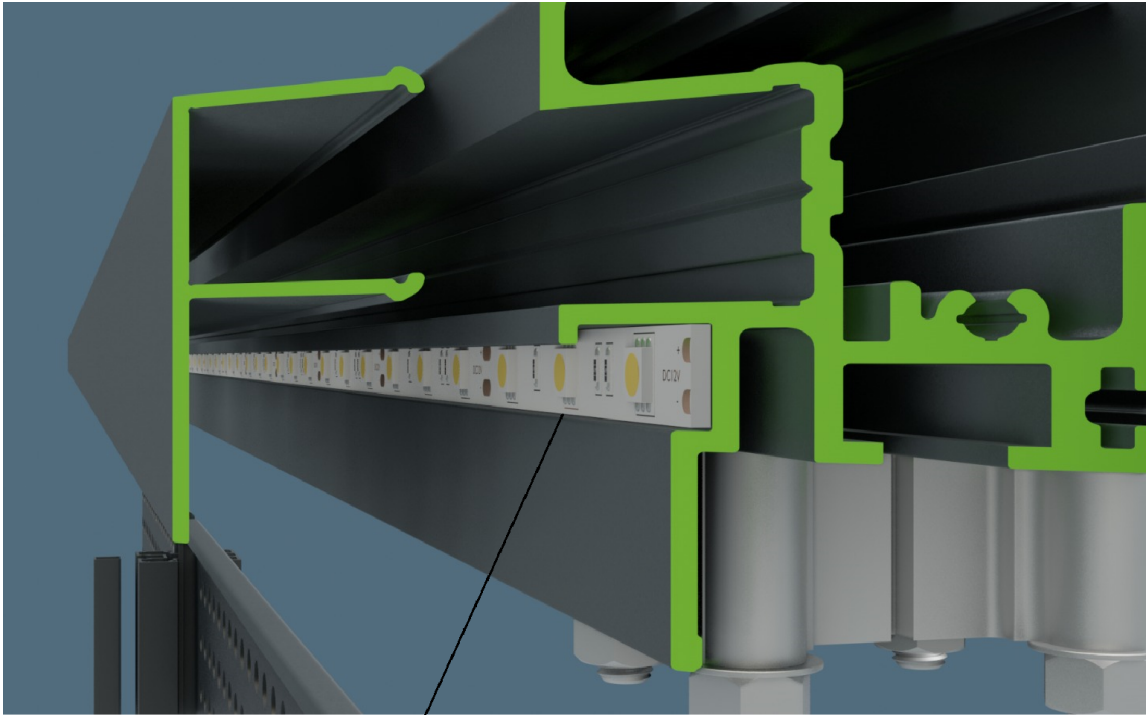
Canopy, Carport and Veranda Systems

This drawing and the product it displays is the sole property of The Milwood Group & Alideck any reproduction of this drawing or product without the written permission of The Milwood Group & Alideck is prohibited.

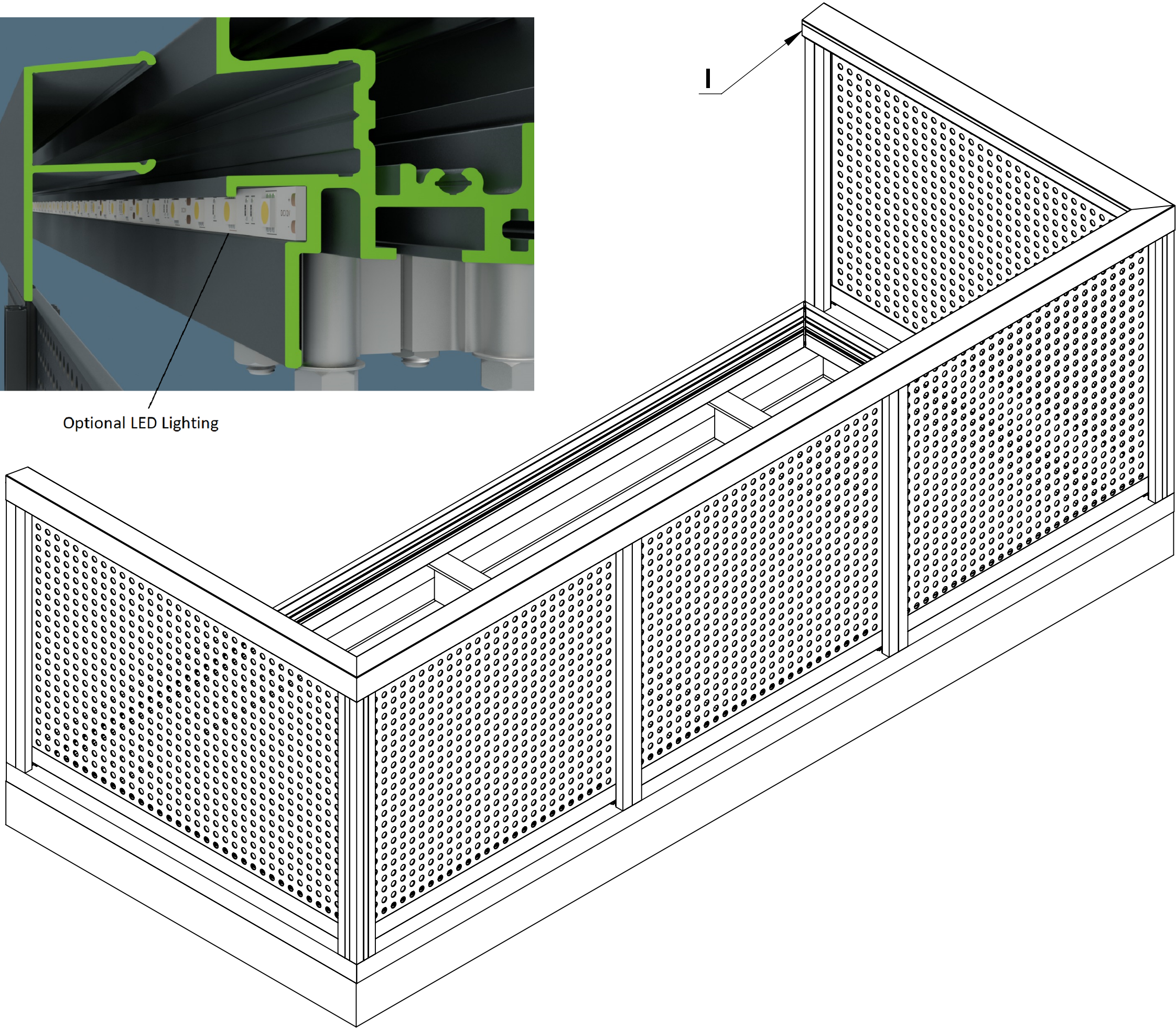
Drawing Title:
(AliRail System With Aluminium Infill Panels) - (Installation Guide)

Product: AliRail Profile			
Date 21-11-20	Page Size A3 (L)	Scale DNS	Drawn Shyam
Issuer MIL	Sequence 000001	(Tol) +/- 1mm	Rev V1
If In any doubt about details on this drawing call us on 01622 235 672	 3rd Angle Projection	Finish PPC	Page 13 of 14

Step 11 : Attach the Hand Rail Trim to the Hand Rail as shown



Optional LED Lighting



Notes.
This is an example balcony, the options are configurable.

Customer Sign Off.

Sign _____

Date _____


Record Of Revision Changes.

1. Creation of drawing (V1)

Colour; Any standard RAL colour


Delivery and Storage.
When components are delivered please ensure they are inspected and stored flat, also please ensure they are stored out of the sun. Do not store components upright.

Product Details:
Example Balcony Size 3.5 metres x 1.5 metre




Modular Balustrade Systems

From



Aluminium Decking



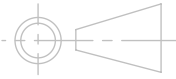
MILWOOD GROUP

Canopy, Carport and Veranda Systems

This drawing and the product it displays is the sole property of The Milwood Group & Alideck any reproduction of this drawing or product without the written permission of The Milwood Group & Alideck is prohibited.

Drawing Title:
(AliRail System With Aluminium Infill Panels)
- (Installation Guide)

Product:
AliRail Profile

Date 21-11-20	Page Size A3 (L)	Scale DNS	Drawn Shyam
Issuer MIL	Sequence 000001	(Tol) +/- 1mm	Rev V1
If In any doubt about details on this drawing call us on 01622 235 672		 3rd Angle Projection	Page 14 of 14