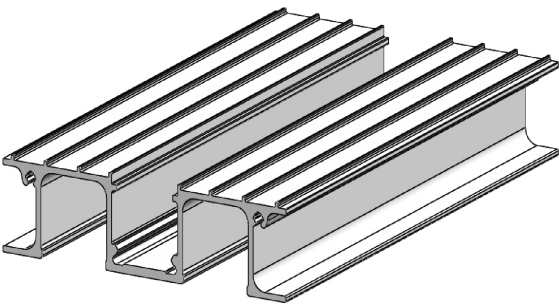


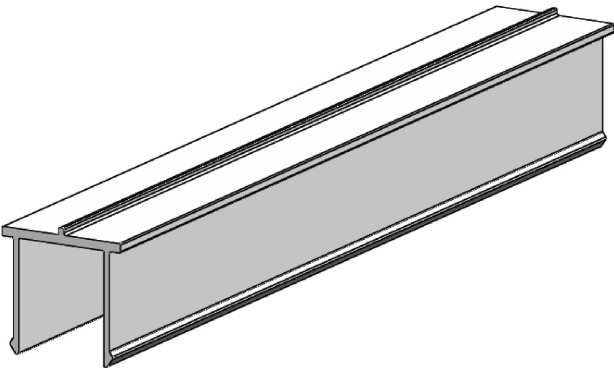
(Alideck - Senior Balcony Board With Lite Joist & Optional Drainage Channel) - (Installation Guide)

Notes.
Example Sections of Senior Balcony Board

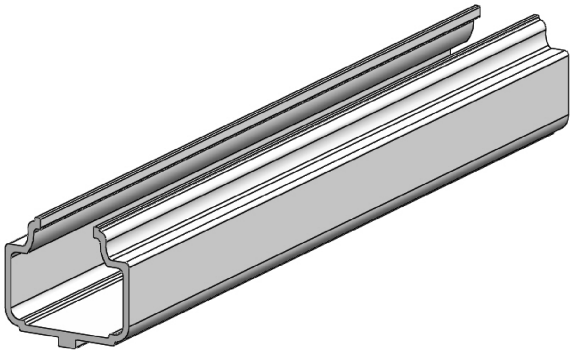
A. Senior Balcony Board



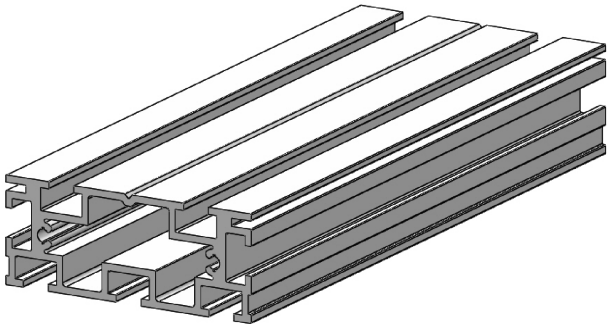
B. Senior Balcony Board Clip



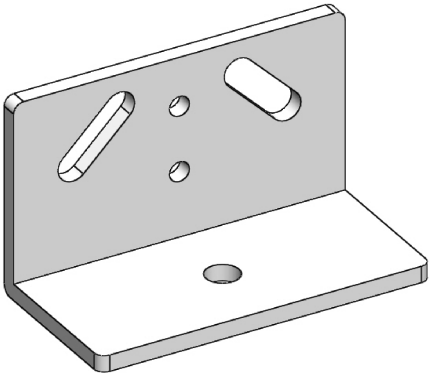
C. Senior Balcony Board Drainage Channel



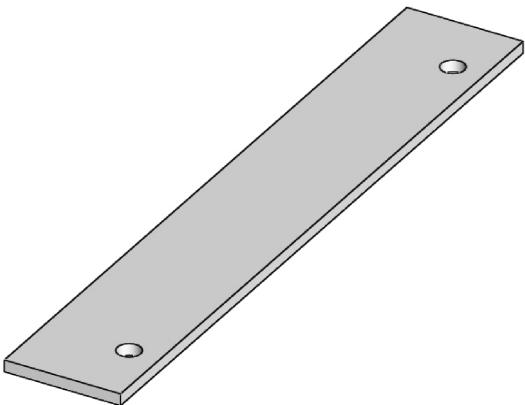
D. Lite Joist



E. Pedestal Bracket



F. End Plate



Customer Sign Off.

Sign _____

Date _____

Record Of Revision Changes.

1. Creation of drawing (V1)

Colour; Any Standard RAL Colour

Delivery and Storage.

When components are delivered please ensure they are inspected and stored flat, also please ensure they are stored out of the sun. Do not store components upright.

Product Details:

Senior Balcony Board, Senior Balcony Board Clip, Senior Balcony Board Drainage Channel, Lite Joist and Pedestal Bracket



From

This drawing and the product it displays is the sole property of The Milwood Group. any reproduction of this drawing or product without the written permission of The Milwood Group is prohibited.

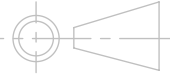


Drawing Title:

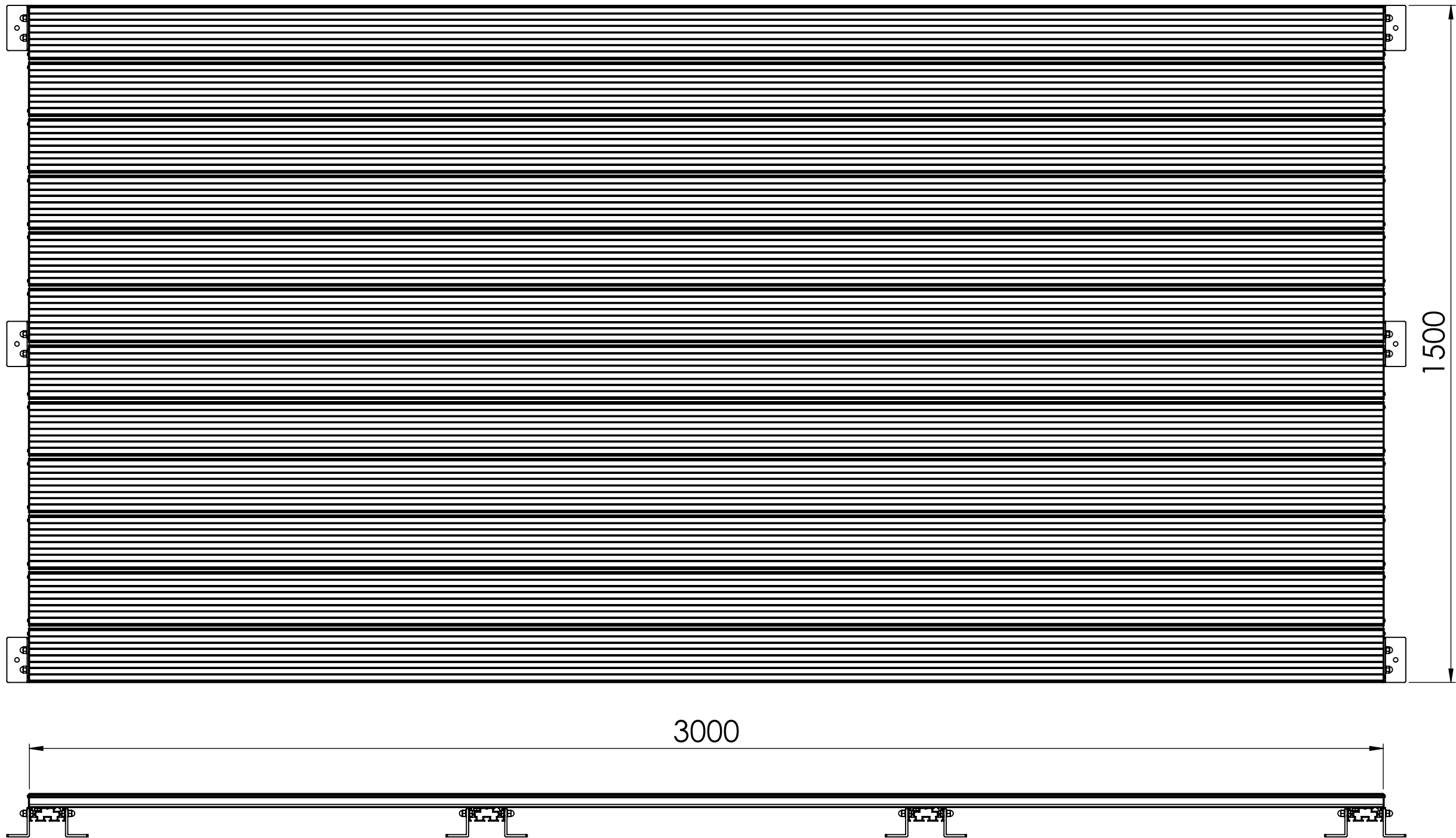
(Alideck - Senior Balcony Board With Lite Joist & Optional Drainage Channel) - (Installation Guide)

Product:

Senior Balcony Board

Date 19-06-20	Page Size A3 (L)	Scale DNS	Drawn Shyam
Issuer MIL	Sequence 000001	(Tol) +/- 1mm	Rev V1
If In any doubt about details on this drawing call us on 01622 235 672	 3rd Angle Projection	Finish PPC	Page 1 of 10

(Alideck - Senior Balcony Board With Lite Joist & Optional Drainage Channel) - (Installation Guide)



Important guidance notes for installation:

1. When installing Senior Boards ensure a minimum of 3mm to a maximum of 8mm (we recommend 5mm) is allowed between each board for drainage. Gap will be 5mm if using the drainage channel.
2. When installing onto waterproofing, ensure adequate spreader plates or additional padding is added between the underside of the foot plate and the waterproofing. AliDeck cannot be held responsible for penetration or damage to existing waterproofing. If unsure of application please contact us.
3. Fix all boards within a maximum span requirements allowed, (upto 1200mm on the Senior Board) do not exceed the span requirements for each type of board, please refer to the span tables on the website, contact us for further details if unsure.
4. When cutting boards to width, never cut a board less that the centre section of 30mm as the cover clip will not be able to be installed. Consider cutting the first and the last board if required to obtain the desired platform width.
5. Please ensure the decking is covered with a barrier (plywood or plastic material) once installed to prevent any third party debris, swarf or waste material from potentially damaging the surface finish.
6. If you are installing onto existing timber, please ensure you have a clear 150mm of air gap underneath the decking to ensure good airflow and to prevent heat build up.
7. Please ensure each bearer is level to the next bearer.
8. Fixings to use are M8 Stainless Steel Bolts, Nuts and Washers, 4mm No. 8 Stainless Steel Screws and Self-Drilling Screws if required.

Notes.
Example Sections of Senior Balcony Board

Customer Sign Off.

Sign _____

Date _____

Record Of Revision Changes.

1. Creation of drawing (V1)

Colour; Any Standard RAL Colour

Delivery and Storage.

When components are delivered please ensure they are inspected and stored flat, also please ensure they are stored out of the sun. Do not store components upright.

Product Details:

Senior Balcony Board, Senior Balcony Board Clip, Senior Balcony Board Drainage Channel, Lite Joist and Pedestal Bracket



This drawing and the product it displays is the sole property of The Milwood Group. any reproduction of this drawing or product without the written permission of The Milwood Group is prohibited.




Drawing Title:

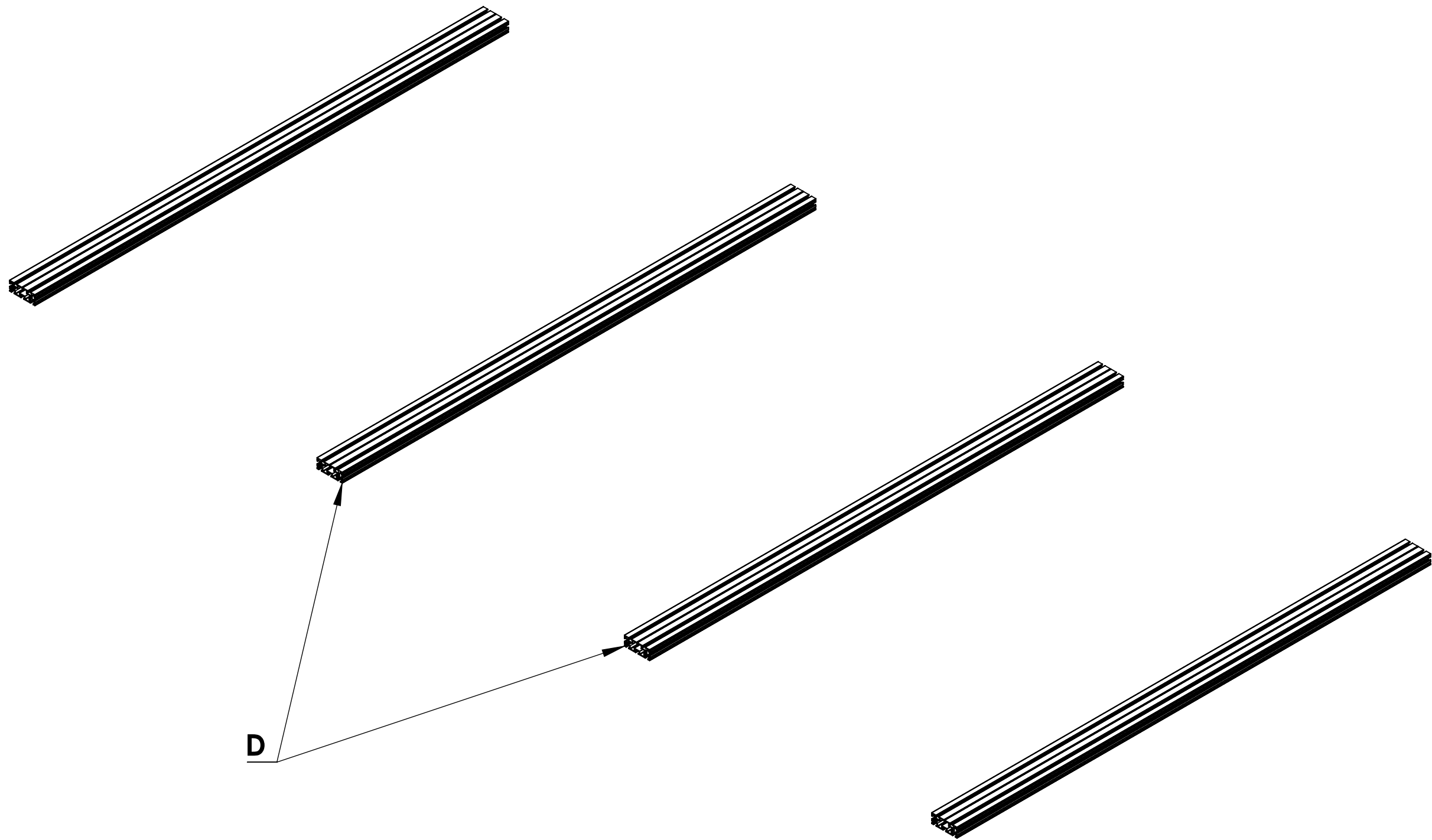
(Alideck - Senior Balcony Board With Lite Joist & Optional Drainage Channel) - (Installation Guide)

Product:

Senior Balcony Board

Date	Page Size	Scale	Drawn
19-06-20	A3 (L)	DNS	Shyam
Issuer	Sequence	(Tol)	Rev
MIL	000001	+/- 1mm	V1
If In any doubt about details on this drawing call us on 01622 235 672	 3rd Angle Projection	Finish	Page
		PPC	2 of 10

Step 1 : Lay the Joists in the position required (no more than 1200mm apart)



Notes.
Example Sections of Senior Balcony Board

Customer Sign Off.

Sign _____

Date_____

Record Of Revision Changes.

1. Creation of drawing (V1)

Colour; Any Standard RAL Colour


Delivery and Storage.
When components are delivered please ensure they are inspected and stored flat, also please ensure they are stored out of the sun. Do not store components upright.

Product Details:
Senior Balcony Board, Senior Balcony Board Clip, Senior Balcony Board Drainage Channel, Lite Joist and Pedestal Bracket



From

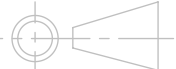
This drawing and the product it displays is the sole property of The Milwood Group. any reproduction of this drawing or product without the written permission of The Milwood Group is prohibited.



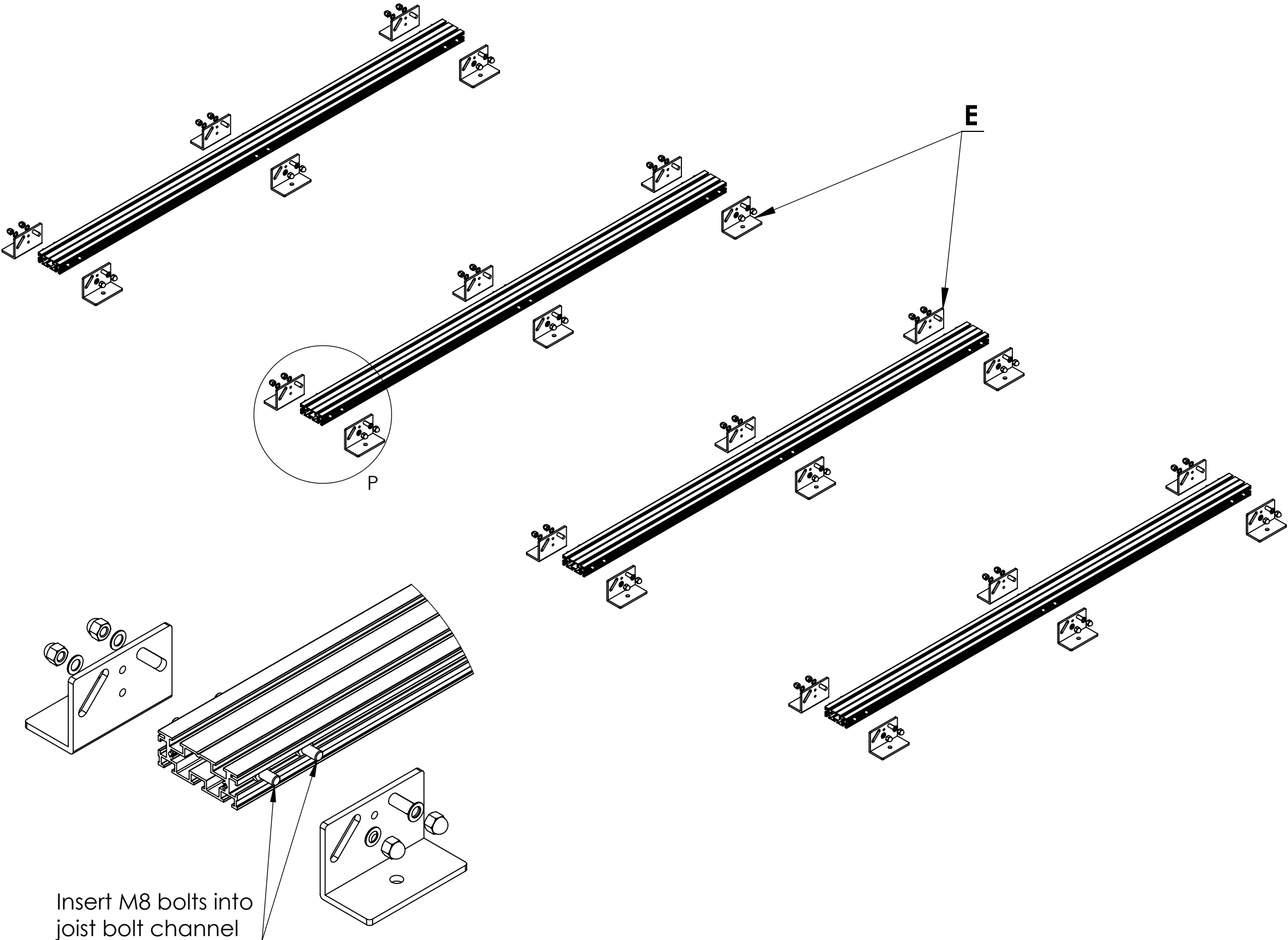
MILWOOD GROUP
Canopy, Carport and Veranda Systems

Drawing Title:
(Alideck - Senior Balcony Board With Lite Joist & Optional Drainage Channel) - (Installation Guide)

Product:
Senior Balcony Board

Date 19-06-20	Page Size A3 (L)	Scale DNS	Drawn Shyam
Issuer MIL	Sequence 000001	(Tol) +/- 1mm	Rev V1
If In any doubt about details on this drawing call us on 01622 235 672	 3rd Angle Projection	Finish PPC	Page 3 of 10

Step 2 : Attach the Adjustable Pedestal Brackets to the Lite Joist.
Use M8 Bolts, Nuts and Washers to fix brackets to Joists.



DETAIL P

Notes.
Example Sections of Senior Balcony Board

Customer Sign Off.

Sign _____

Date _____

Record Of Revision Changes.
1. Creation of drawing (V1)

Colour; Any Standard RAL
Colour

Delivery and Storage.
When components are delivered please ensure they are inspected and stored flat, also please ensure they are stored out of the sun. Do not store components upright.

Product Details:
Senior Balcony Board, Senior Balcony Board Clip,
Senior Balcony Board Drainage Channel, Lite Joist
and Pedestal Bracket




From

This drawing and the product it displays is the sole property of The Milwood Group. any reproduction of this drawing or product without the written permission of The Milwood Group is prohibited.

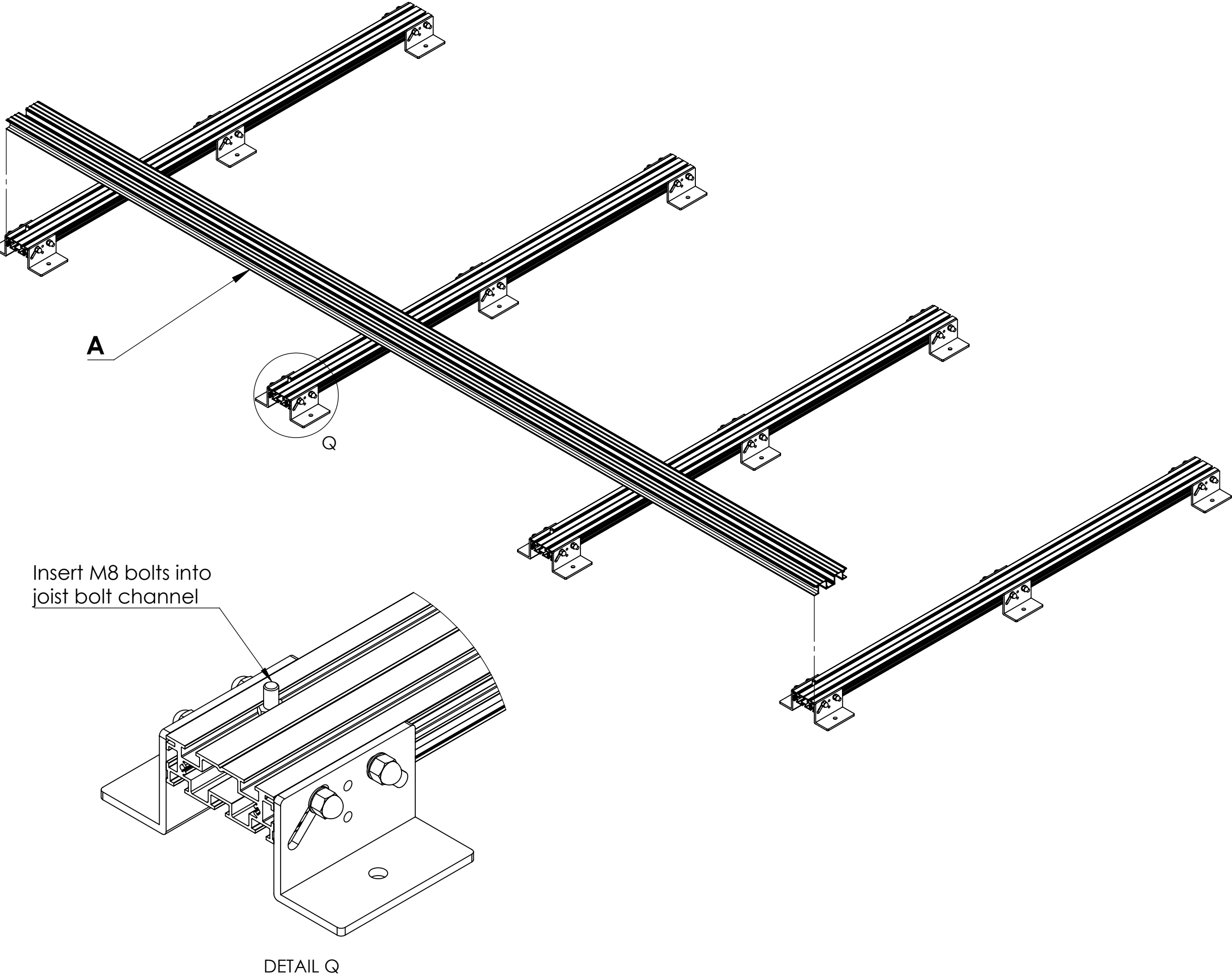


Drawing Title:
(Alideck - Senior Balcony Board With Lite Joist & Optional Drainage Channel) - (Installation Guide)

Product:
Senior Balcony Board

Date 19-06-20	Page Size A3 (L)	Scale DNS	Drawn Shyam
Issuer MIL	Sequence 000001	(Tol) +/- 1mm	Rev V1
If In any doubt about details on this drawing call us on 01622 235 672	 3rd Angle Projection	Finish PPC	Page 4 of 10

Step 3 : Attach the first Board as shown. Use M8 Bolts, Nuts and Washers to fix Board to Joists.



Notes.
Example Sections of Senior Balcony Board

Customer Sign Off.

Sign _____

Date _____

Record Of Revision Changes.

1. Creation of drawing (V1)

Colour; Any Standard RAL Colour

Delivery and Storage.
When components are delivered please ensure they are inspected and stored flat, also please ensure they are stored out of the sun. Do not store components upright.

Product Details:
Senior Balcony Board, Senior Balcony Board Clip, Senior Balcony Board Drainage Channel, Lite Joist and Pedestal Bracket



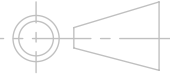
From

This drawing and the product it displays is the sole property of The Milwood Group. any reproduction of this drawing or product without the written permission of The Milwood Group is prohibited.

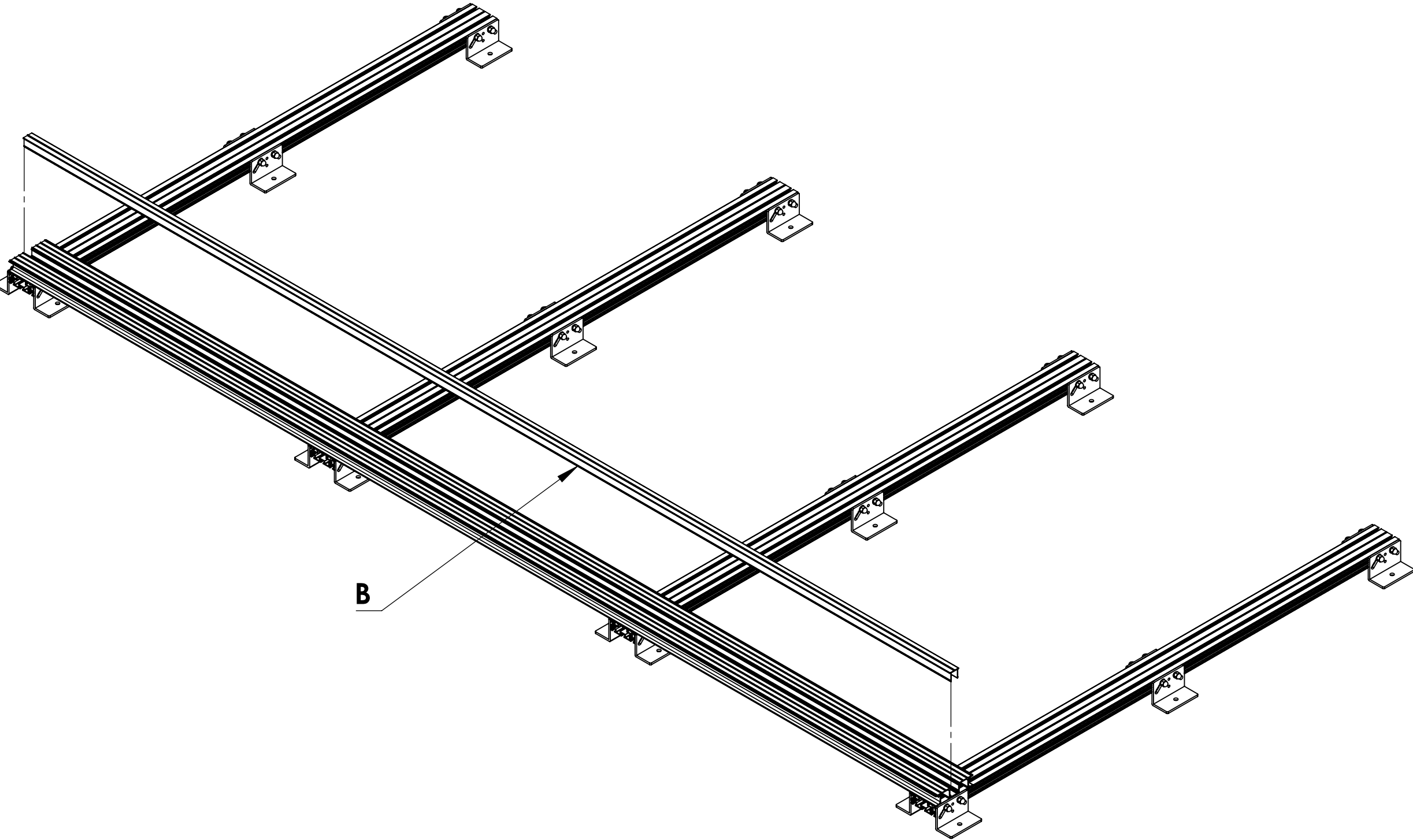
MILWOOD GROUP
Canopy, Carport and Veranda Systems

Drawing Title:
(Alideck - Senior Balcony Board With Lite Joist & Optional Drainage Channel) - (Installation Guide)

Product:
Senior Balcony Board

Date 19-06-20	Page Size A3 (L)	Scale DNS	Drawn Shyam
Issuer MIL	Sequence 000001	(Tol) +/- 1mm	Rev V1
If In any doubt about details on this drawing call us on 01622 235 672	 3rd Angle Projection	Finish PPC	Page 5 of 10

Step 4 : Attach the first Board Clip to the first Board as shown



Notes.
Example Sections of Senior Balcony Board

Customer Sign Off.

Sign _____

Date_____

Record Of Revision Changes.

1. Creation of drawing (V1)

Colour; Any Standard RAL
Colour

Delivery and Storage.
When components are delivered please ensure they are inspected and stored flat, also please ensure they are stored out of the sun. Do not store components upright.

Product Details:
Senior Balcony Board, Senior Balcony Board Clip,
Senior Balcony Board Drainage Channel, Lite Joist
and Pedestal Bracket



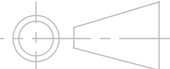
From

This drawing and the product it displays is the sole property of The Milwood Group. any reproduction of this drawing or product without the written permission of The Milwood Group is prohibited.

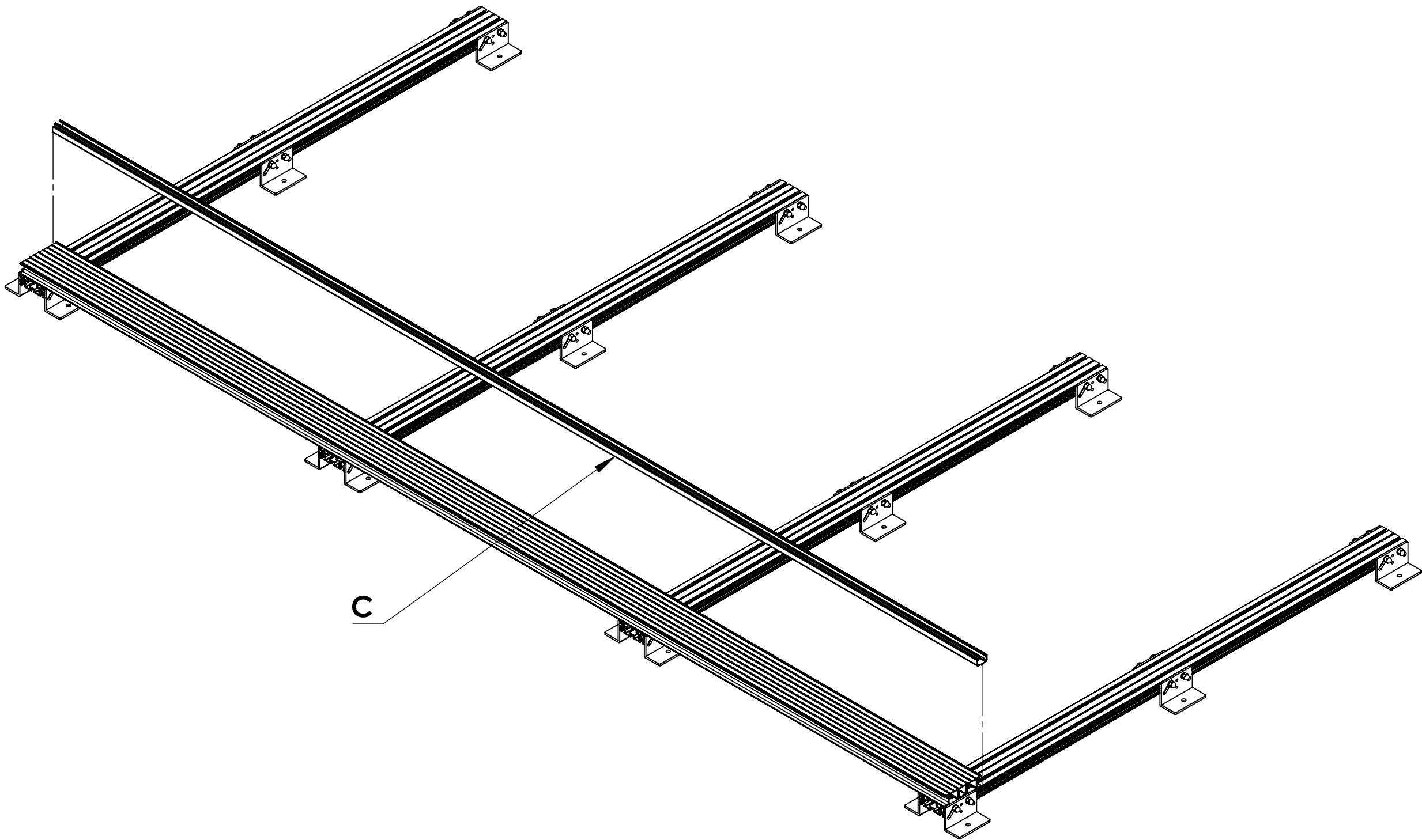


Drawing Title:
(Alideck - Senior Balcony Board With Lite Joist & Optional Drainage Channel) - (Installation Guide)

Product:
Senior Balcony Board

Date 19-06-20	Page Size A3 (L)	Scale DNS	Drawn Shyam
Issuer MIL	Sequence 000001	(Tol) +/- 1mm	Rev V1
If In any doubt about details on this drawing call us on 01622 235 672	 3rd Angle Projection	Finish PPC	Page 6 of 10

Step 5 : Attach the first Optional Drainage Channel to the first Board as shown



Notes.
Example Sections of Senior Balcony Board

Customer Sign Off.

Sign _____

Date _____

Record Of Revision Changes.

1. Creation of drawing (V1)

Colour; Any Standard RAL
Colour

Delivery and Storage.
When components are delivered please ensure they are inspected and stored flat, also please ensure they are stored out of the sun. Do not store components upright.

Product Details:
Senior Balcony Board, Senior Balcony Board Clip,
Senior Balcony Board Drainage Channel, Lite Joist
and Pedestal Bracket

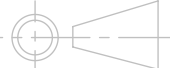

Aluminium Decking
From

This drawing and the product it displays is the sole property of The Milwood Group. any reproduction of this drawing or product without the written permission of The Milwood Group is prohibited.

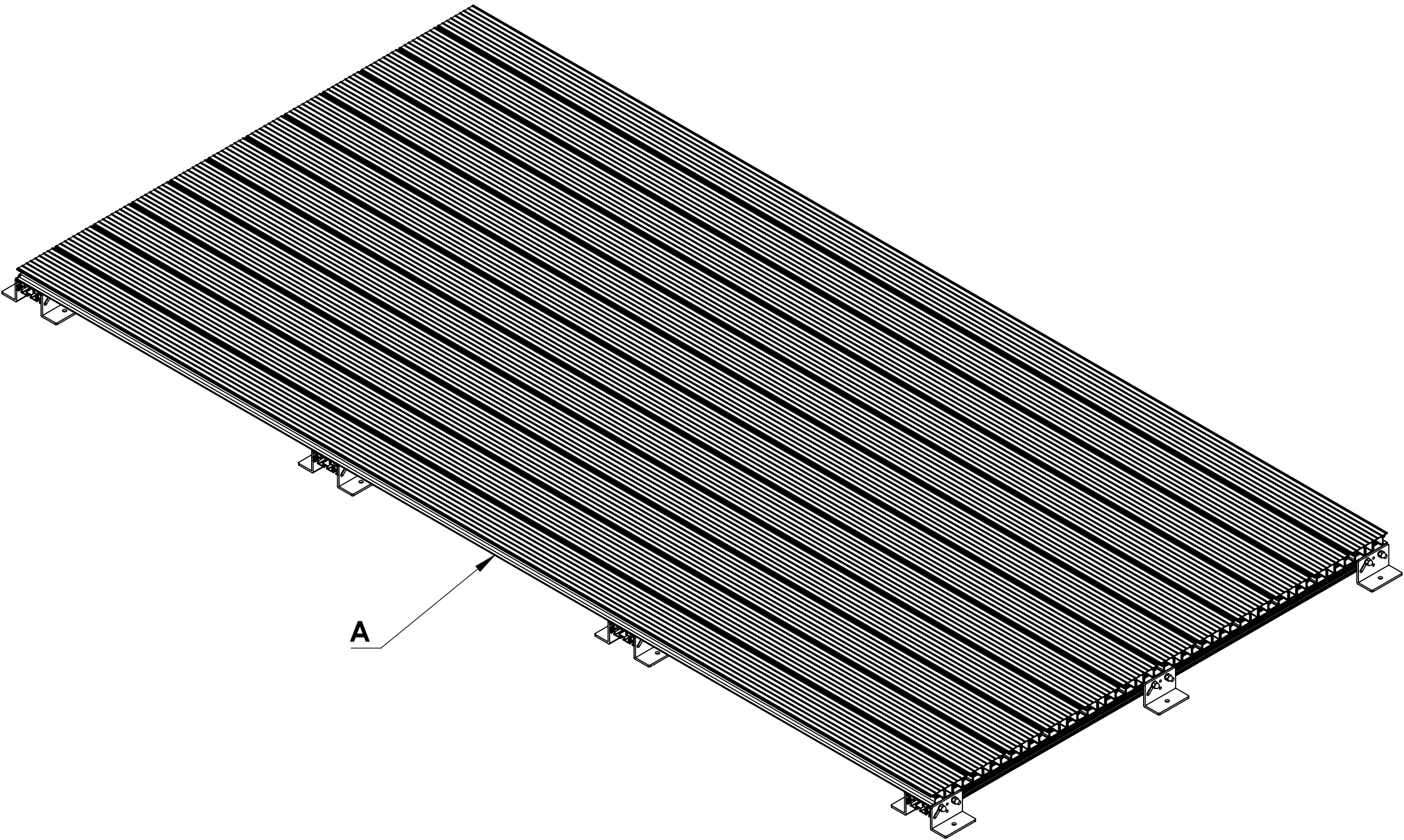


Drawing Title:
(Alideck - Senior Balcony Board With Lite Joist & Optional Drainage Channel) - (Installation Guide)

Product:
Senior Balcony Board

Date 19-06-20	Page Size A3 (L)	Scale DNS	Drawn Shyam
Issuer MIL	Sequence 000001	(Tol) +/- 1mm	Rev V1
If In any doubt about details on this drawing call us on 01622 235 672	 3rd Angle Projection	Finish PPC	Page 7 of 10

Step 6 : Attach the rest of the Boards, Board Clips and Optional Drainage Channels



Notes.
Example Sections of Senior Balcony Board

Customer Sign Off.

Sign _____

Date _____

Record Of Revision Changes.

1. Creation of drawing (V1)

Colour; Any Standard RAL Colour


Delivery and Storage.
When components are delivered please ensure they are inspected and stored flat, also please ensure they are stored out of the sun. Do not store components upright.

Product Details:
Senior Balcony Board, Senior Balcony Board Clip, Senior Balcony Board Drainage Channel, Lite Joist and Pedestal Bracket



From

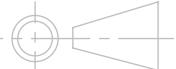
This drawing and the product it displays is the sole property of The Milwood Group. any reproduction of this drawing or product without the written permission of The Milwood Group is prohibited.



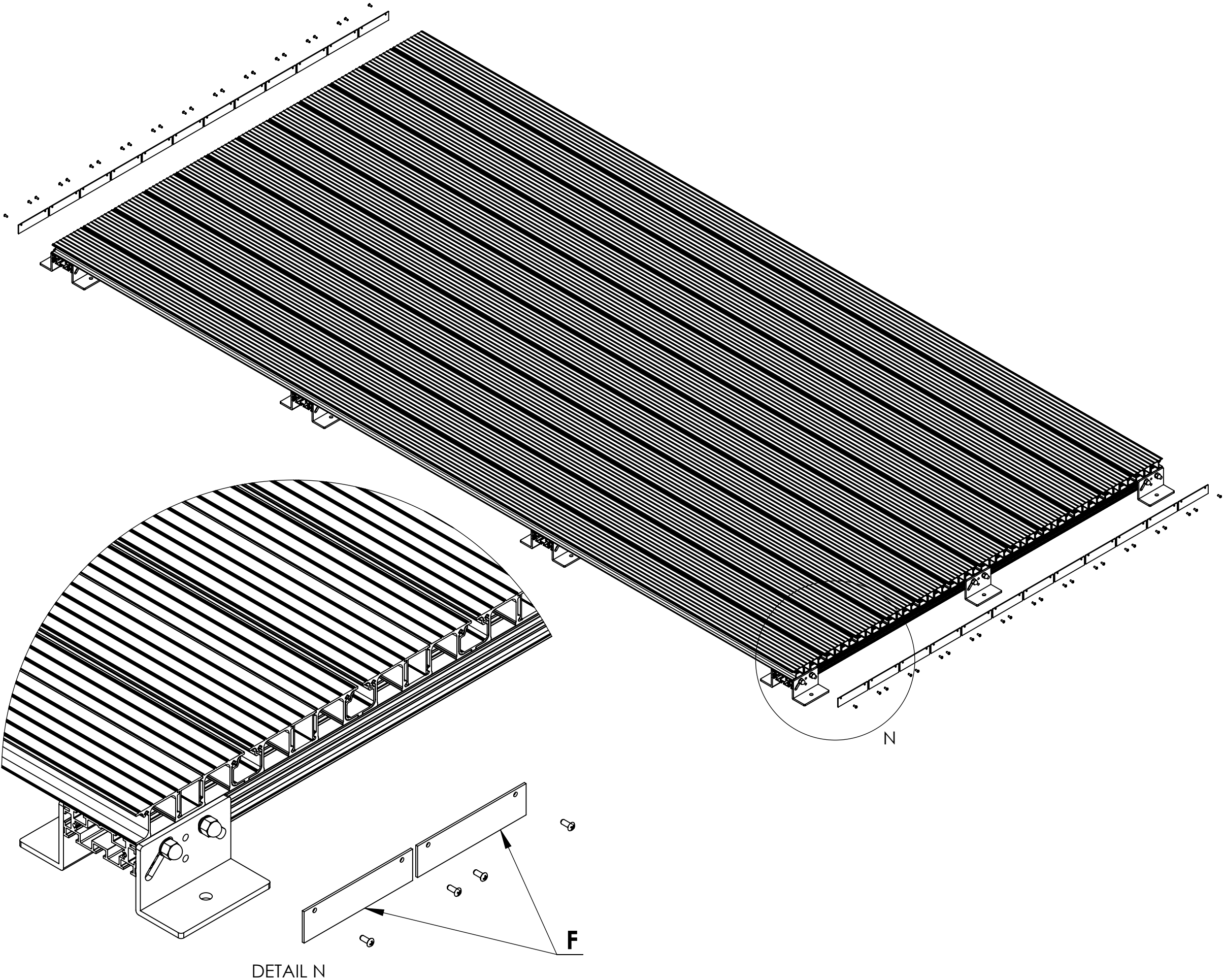
MILWOOD GROUP
Canopy, Carport and Veranda Systems

Drawing Title:
(Alideck - Senior Balcony Board With Lite Joist & Optional Drainage Channel) - (Installation Guide)

Product:
Senior Balcony Board

Date 19-06-20	Page Size A3 (L)	Scale DNS	Drawn Shyam
Issuer MIL	Sequence 000001	(Tol) +/- 1mm	Rev V1
If in any doubt about details on this drawing call us on 01622 235 672	 3rd Angle Projection	Finish PPC	Page 8 of 10

Step 7 : Now attach the End Plates using 4mm no. 8 Stainless Steel Screw if required



Notes.
Example Sections of Senior Balcony Board

Customer Sign Off.

Sign _____

Date _____

Record Of Revision Changes.
1. Creation of drawing (V1)

Colour; Any Standard RAL
Colour

Delivery and Storage.
When components are delivered please ensure they are inspected and stored flat, also please ensure they are stored out of the sun. Do not store components upright.

Product Details:
Senior Balcony Board, Senior Balcony Board Clip,
Senior Balcony Board Drainage Channel, Lite Joist
and Pedestal Bracket



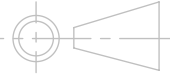
From

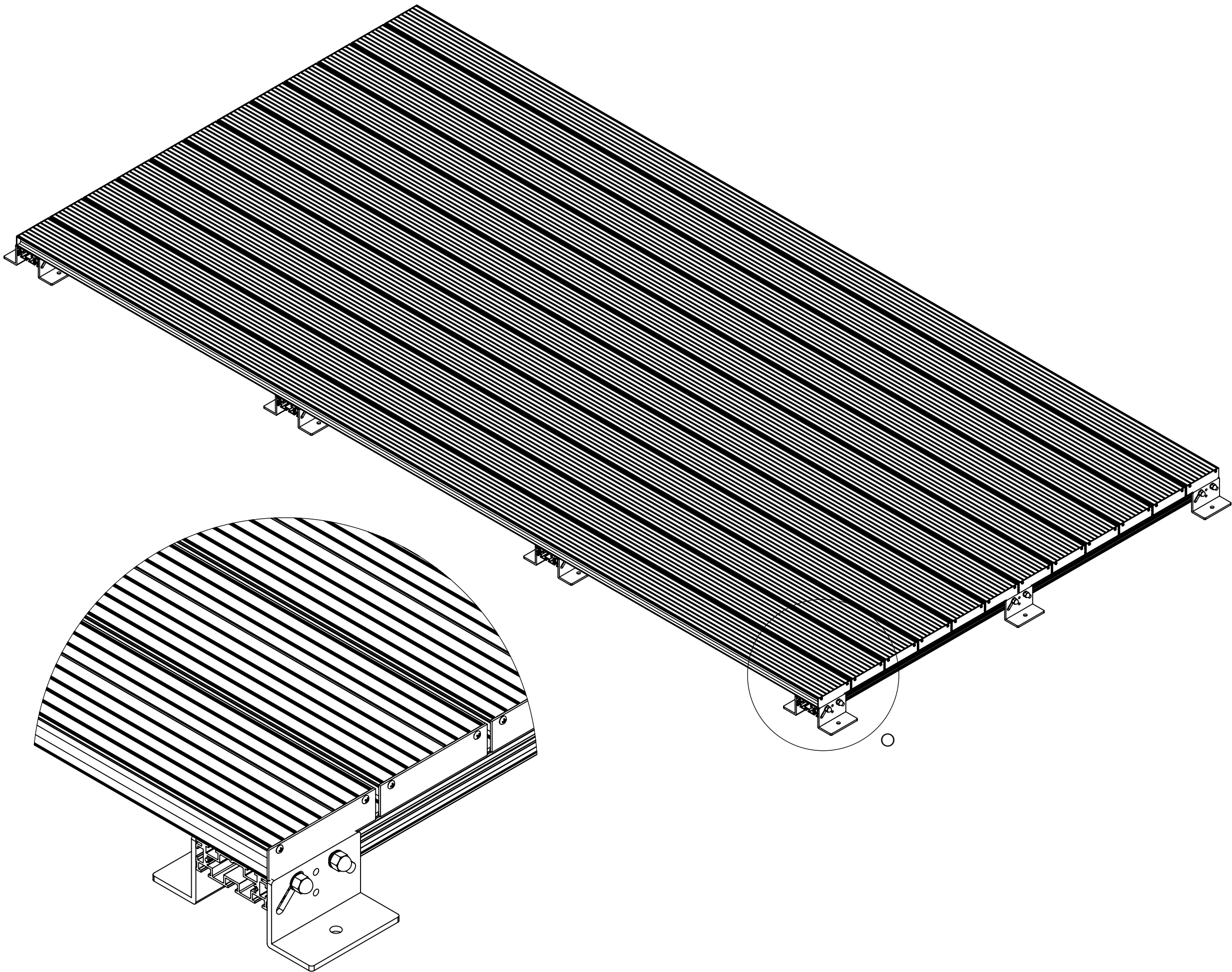
This drawing and the product it displays is the sole property of The Milwood Group. any reproduction of this drawing or product without the written permission of The Milwood Group is prohibited.



Drawing Title:
(Alideck - Senior Balcony Board With Lite Joist & Optional Drainage Channel) - (Installation Guide)

Product:
Senior Balcony Board

Date 19-06-20	Page Size A3 (L)	Scale DNS	Drawn Shyam
Issuer MIL	Sequence 000001	(Tol) +/- 1mm	Rev V1
If In any doubt about details on this drawing call us on 01622 235 672	 3rd Angle Projection	Finish PPC	Page 9 of 10



DETAIL O

Notes.
Example Sections of Senior Balcony Board

Customer Sign Off.

Sign _____

Date _____

Record Of Revision Changes.
1. Creation of drawing (V1)

Colour; Any Standard RAL
Colour

Delivery and Storage.
When components are delivered please ensure they are inspected and stored flat, also please ensure they are stored out of the sun. Do not store components upright.

Product Details:
Senior Balcony Board, Senior Balcony Board Clip,
Senior Balcony Board Drainage Channel, Lite Joist
and Pedestal Bracket



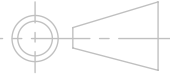
From

This drawing and the product it displays is the sole property of The Milwood Group. any reproduction of this drawing or product without the written permission of The Milwood Group is prohibited.



Drawing Title:
(Alideck - Senior Balcony Board With Lite Joist & Optional Drainage Channel) - (Installation Guide)

Product:
Senior Balcony Board

Date 19-06-20	Page Size A3 (L)	Scale DNS	Drawn Shyam
Issuer MIL	Sequence 000001	(Tol) +/- 1mm	Rev V1
If In any doubt about details on this drawing call us on 01622 235 672	 3rd Angle Projection	Finish PPC	Page 10 of 10