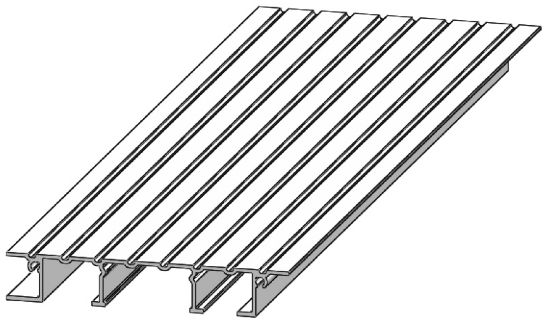
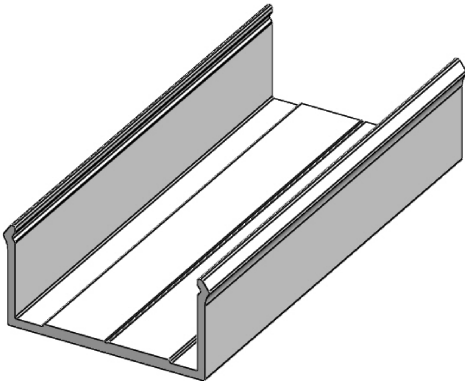


(Alideck - Lite Balcony Board With Triple Bolt Channel) - (Installation Guide)

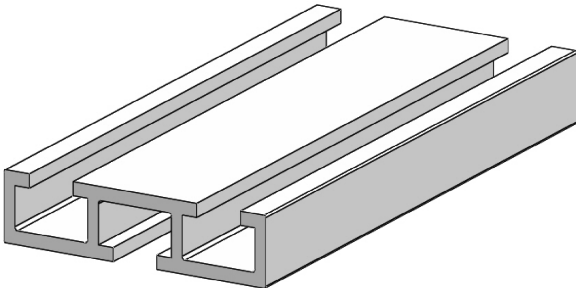
A. Lite Balcony Board



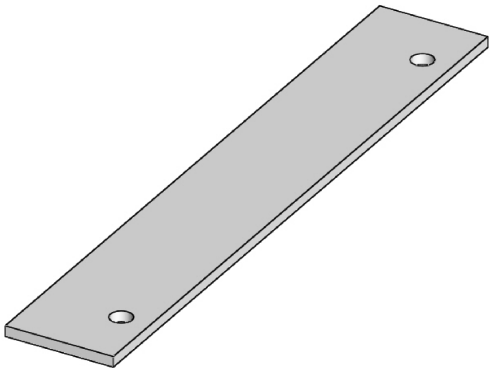
B. Lite Balcony Board Clip



C. Triple Bolt Channel



D. End Plate



Notes.
Example Sections of Lite Balcony Board

Customer Sign Off.

Sign _____

Date _____

Record Of Revision Changes.

1. Creation of drawing (V1)

Colour; Any Standard RAL
Colour

Delivery and Storage.
When components are delivered please ensure they are inspected and stored flat, also please ensure they are stored out of the sun. Do not store components upright.

Product Details:
Lite Balcony Board, Lite Balcony Board Clip,
and Triple Bolt Channel



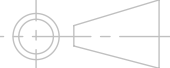
From

This drawing and the product it displays is the sole property of The Milwood Group. any reproduction of this drawing or product without the written permission of The Milwood Group is prohibited.

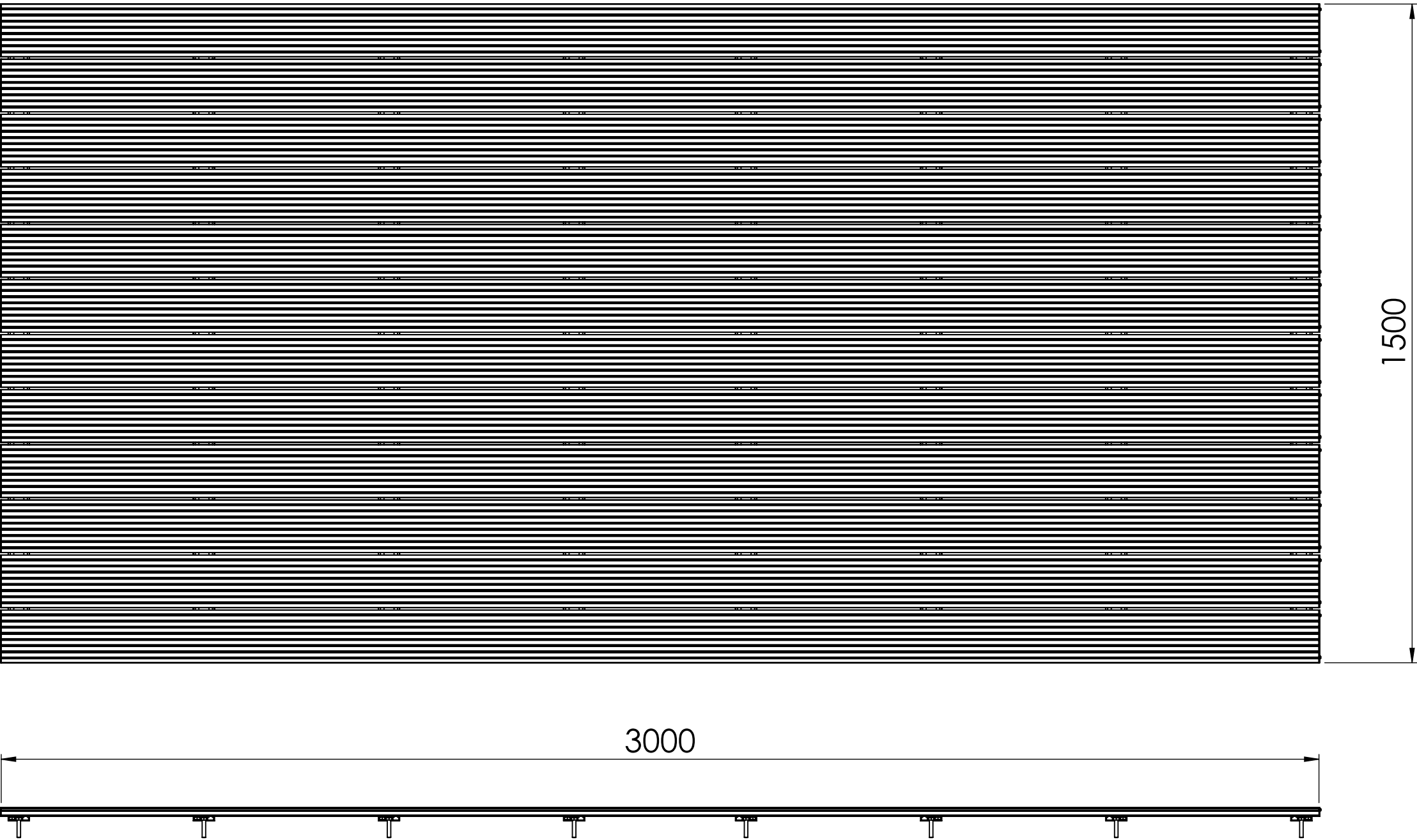


Drawing Title:
(Alideck - Lite Balcony Board With Triple Bolt Channel)
- (Installation Guide)

Product:
Lite Balcony Board

Date 27-06-20	Page Size A3 (L)	Scale DNS	Drawn Shyam
Issuer MIL	Sequence 000001	(Tol) +/- 1mm	Rev V1
If In any doubt about details on this drawing call us on 01622 235 672	 3rd Angle Projection	Finish PPC	Page 1 of 8

(Alideck - Lite Balcony Board With Triple Bolt Channel) - (Installation Guide)



Important guidance notes for installation:

1. When installing Lite Boards ensure a minimum of 3mm to a maximum of 8mm (we recommend 5mm) is allowed between each board for drainage.
2. When installing onto waterproofing, ensure adequate spreader plates or additional padding is added between the underside of the foot plate and the waterproofing. AliDeck cannot be held responsible for penetration or damage to existing waterproofing. If unsure of application please contact us.
3. Fix all boards within a maximum span requirements allowed, (400mm on the Lite Board) do not exceed the span requirements for each type of board, please refer to the span tables on the website, contact us for further details if unsure.
4. When cutting boards to width, never cut a board less than the centre section of 30mm as the cover clip will not be able to be installed. Consider cutting the first and the last board if required to obtain the desired platform width.
5. Please ensure the decking is covered with a barrier (plywood or plastic material) once installed to prevent any third party debris, swarf or waste material from potentially damaging the surface finish.
6. If you are installing onto existing timber, please ensure you have a clear 150mm of air gap underneath the decking to ensure good airflow and to prevent heat build up.
7. Please ensure each clip is level to the next clip and in line to ensure the boards will clip down successfully.
8. Please be sure the clips are in the correct locations to avoid progressive error, we recommend you installing the first line of clips then install the first board, then install the second line of clips, (just incase an error causes issues to the next board).
9. Fixings to use are M8 Stainless Steel Bolts, Nuts and Washers, 4mm No. 8 Stainless Steel Screws and Self-Drilling Screws if required.

Notes.
Example Sections of Lite Balcony Board

Customer Sign Off.

Sign _____

Date _____

Record Of Revision Changes.
1. Creation of drawing (V1)

Colour; Any Standard RAL Colour

Delivery and Storage.
When components are delivered please ensure they are inspected and stored flat, also please ensure they are stored out of the sun. Do not store components upright.

Product Details:
Lite Balcony Board, Lite Balcony Board Clip, and Triple Bolt Channel



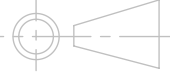
From

This drawing and the product it displays is the sole property of The Milwood Group. any reproduction of this drawing or product without the written permission of The Milwood Group is prohibited.

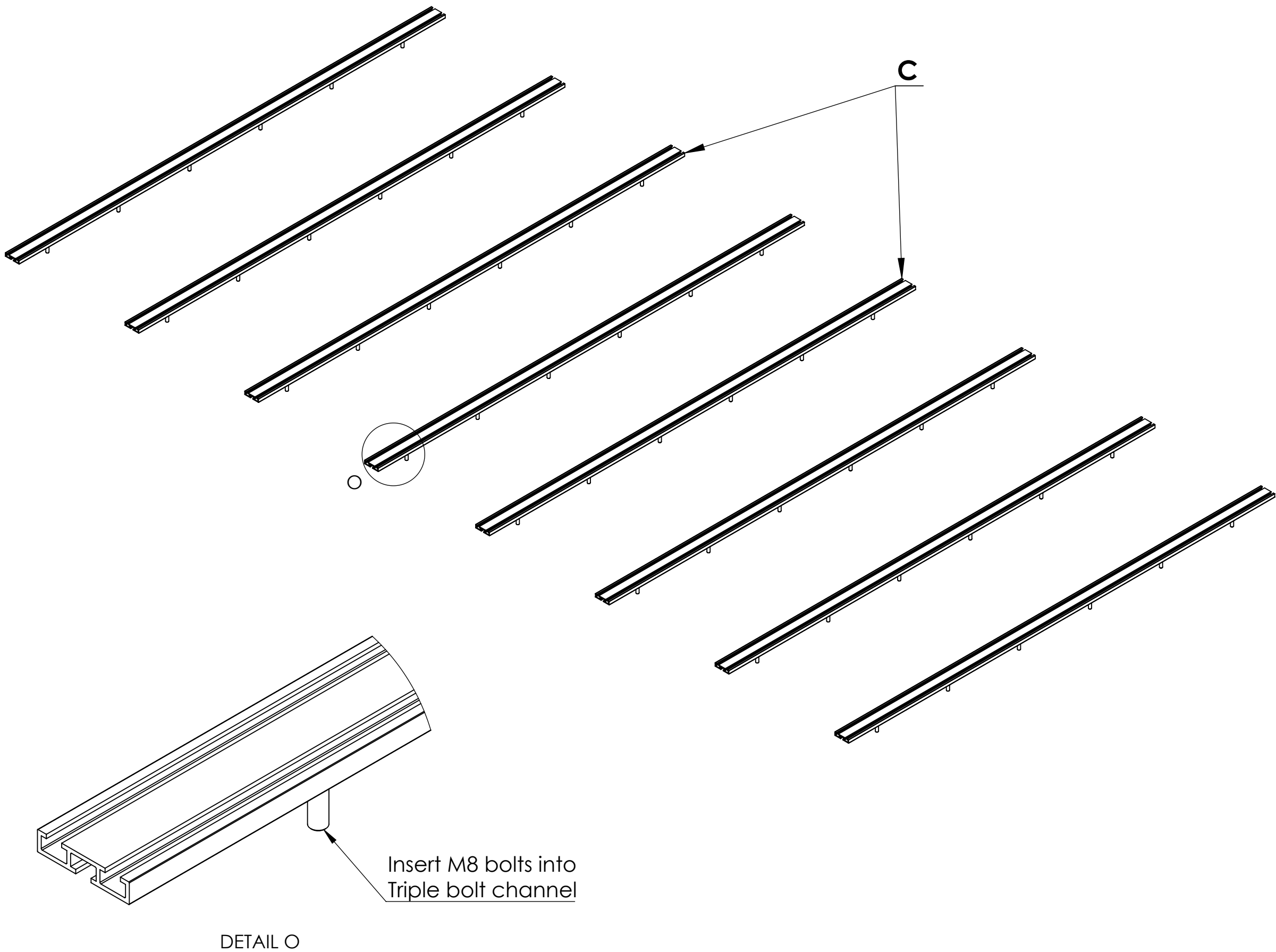


Drawing Title:
(Alideck - Lite Balcony Board With Triple Bolt Channel) - (Installation Guide)

Product:
Lite Balcony Board

Date	Page Size	Scale	Drawn
27-06-20	A3 (L)	DNS	Shyam
Issuer	Sequence	(Tol)	Rev
MIL	000001	+/- 1mm	V1
If In any doubt about details on this drawing call us on 01622 235 672		Finish	Page
	3rd Angle Projection	PPC	2 of 8

Step 1 : Lay the Channels in the position required (no more than 400mm apart)
Place the Triple Bolt Channel so the side with one bolt channel is facing downwards



Notes.
Example Sections of Lite Balcony Board

Customer Sign Off.

Sign _____

Date _____

Record Of Revision Changes.
1. Creation of drawing (V1)

Colour; Any Standard RAL
Colour

Delivery and Storage.
When components are delivered please ensure they are inspected and stored flat, also please ensure they are stored out of the sun. Do not store components upright.

Product Details:
Lite Balcony Board, Lite Balcony Board Clip,
and Triple Bolt Channel



Aluminium Decking

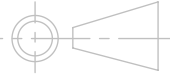
From

This drawing and the product it displays is the sole property of The Milwood Group. any reproduction of this drawing or product without the written permission of The Milwood Group is prohibited.

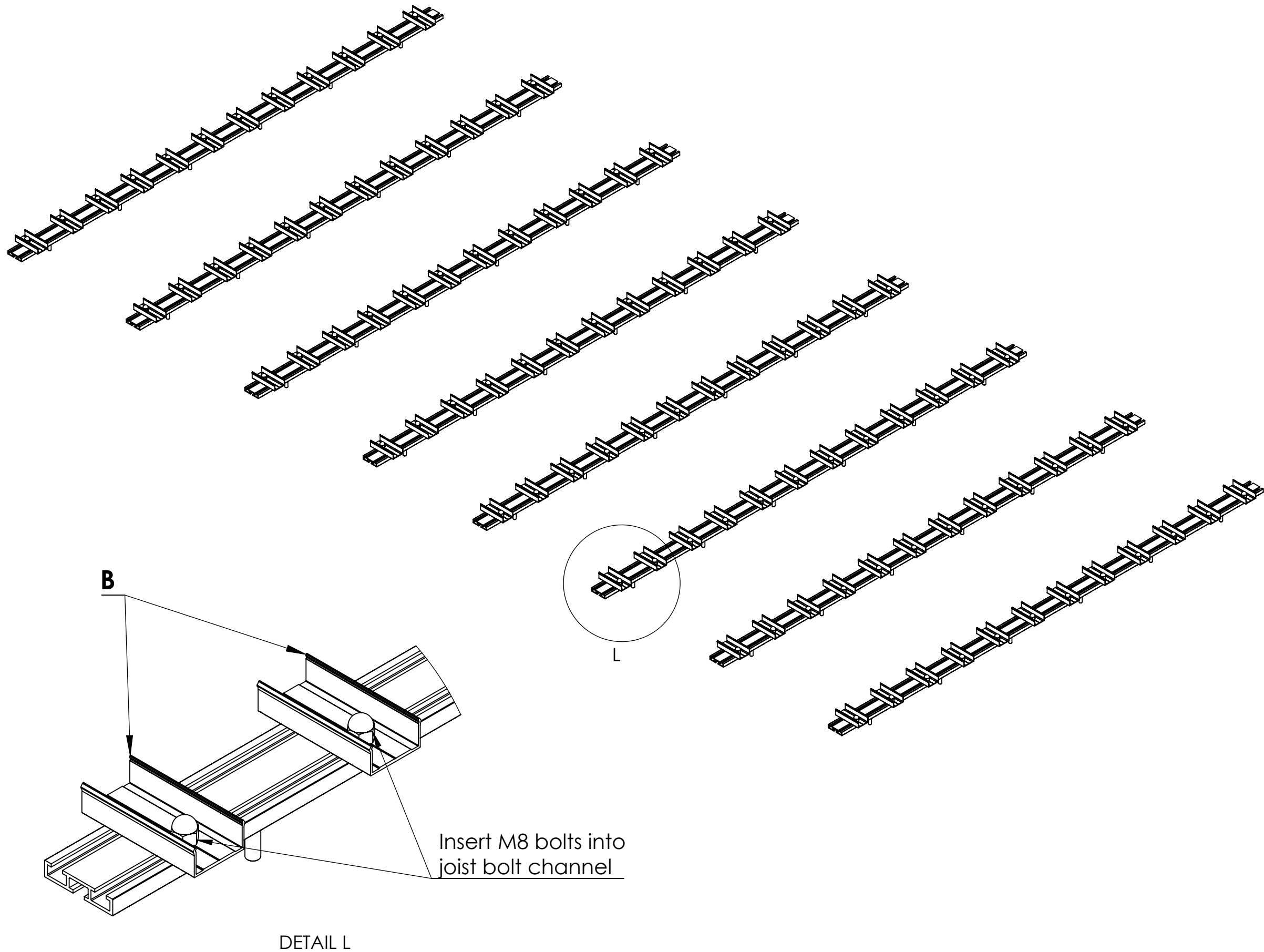


Drawing Title:
(Alideck - Lite Balcony Board With Triple Bolt Channel)
- (Installation Guide)

Product:
Lite Balcony Board

Date 27-06-20	Page Size A3 (L)	Scale DNS	Drawn Shyam
Issuer MIL	Sequence 000001	(Tol) +/- 1mm	Rev V1
If In any doubt about details on this drawing call us on 01622 235 672	 3rd Angle Projection	Finish PPC	Page 3 of 8

Step 2 : Attach the Clips as shown and ensure the center to center dimension is 125mm for a 5mm Board spacing. Use M8 Bolts, Nuts and Washers to fix Clip to Channels.



Notes.
Example Sections of Lite Balcony Board

Customer Sign Off.

Sign _____

Date _____

Record Of Revision Changes.

1. Creation of drawing (V1)

Colour; Any Standard RAL Colour


Delivery and Storage.
When components are delivered please ensure they are inspected and stored flat, also please ensure they are stored out of the sun. Do not store components upright.

Product Details:
Lite Balcony Board, Lite Balcony Board Clip, and Triple Bolt Channel



From

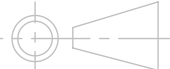
This drawing and the product it displays is the sole property of The Milwood Group. any reproduction of this drawing or product without the written permission of The Milwood Group is prohibited.



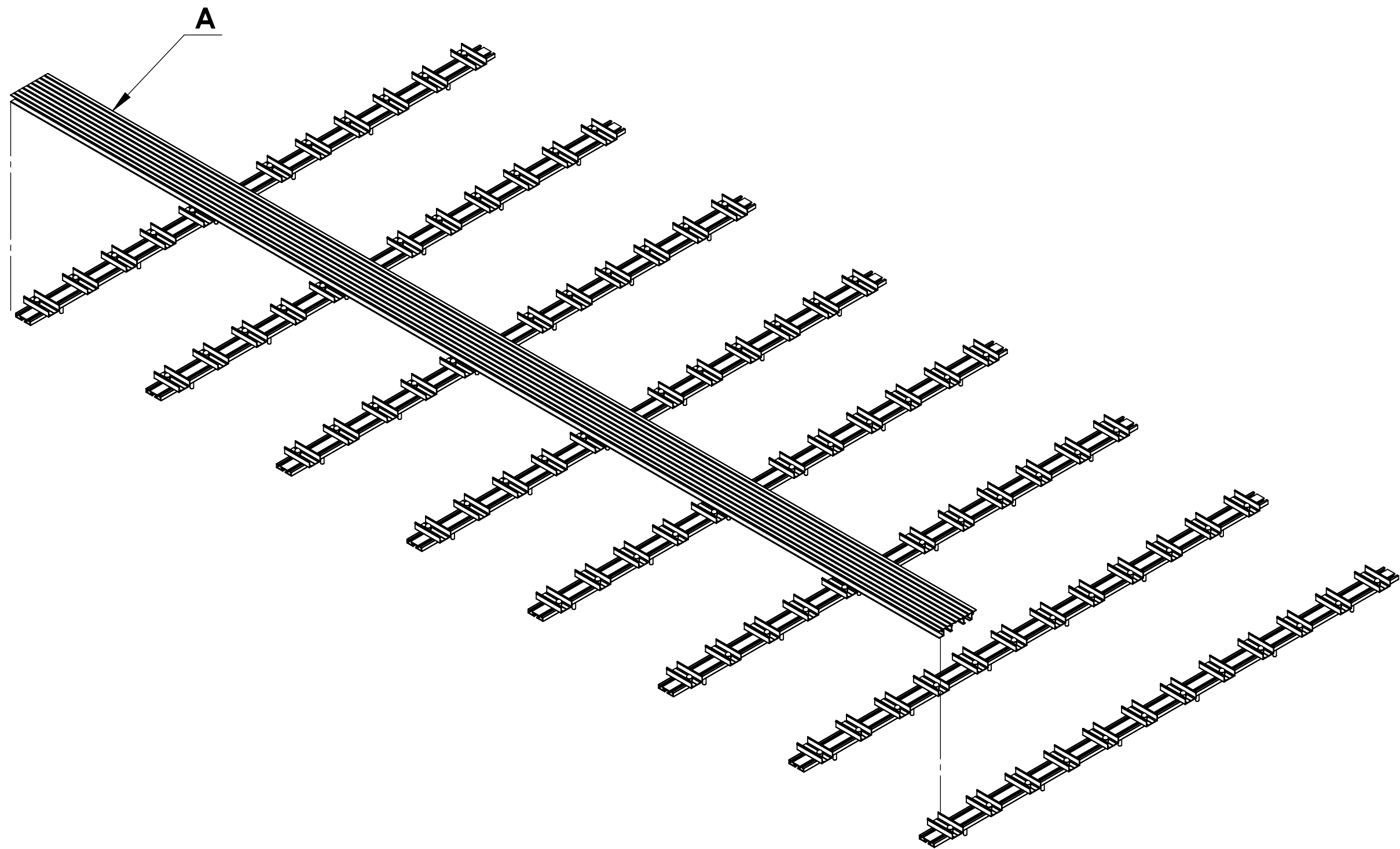
MILWOOD GROUP
Canopy, Carport and Veranda Systems

Drawing Title:
(Alideck - Lite Balcony Board With Triple Bolt Channel) - (Installation Guide)

Product:
Lite Balcony Board

Date 27-06-20	Page Size A3 (L)	Scale DNS	Drawn Shyam
Issuer MIL	Sequence 000001	(Tol) +/- 1mm	Rev V1
If In any doubt about details on this drawing call us on 01622 235 672	 3rd Angle Projection	Finish PPC	Page 4 of 8

Step 3 : Attach the first Board to the Clips as shown



Notes.
Example Sections of Lite Balcony Board

Customer Sign Off.

Sign _____

Date _____

Record Of Revision Changes.
1. Creation of drawing (V1)

Colour; Any Standard RAL
Colour

Delivery and Storage.
When components are delivered please ensure they are inspected and stored flat, also please ensure they are stored out of the sun. Do not store components upright.

Product Details:
Lite Balcony Board, Lite Balcony Board Clip,
and Triple Bolt Channel




From

This drawing and the product it displays is the sole property of The Milwood Group. any reproduction of this drawing or product without the written permission of The Milwood Group is prohibited.

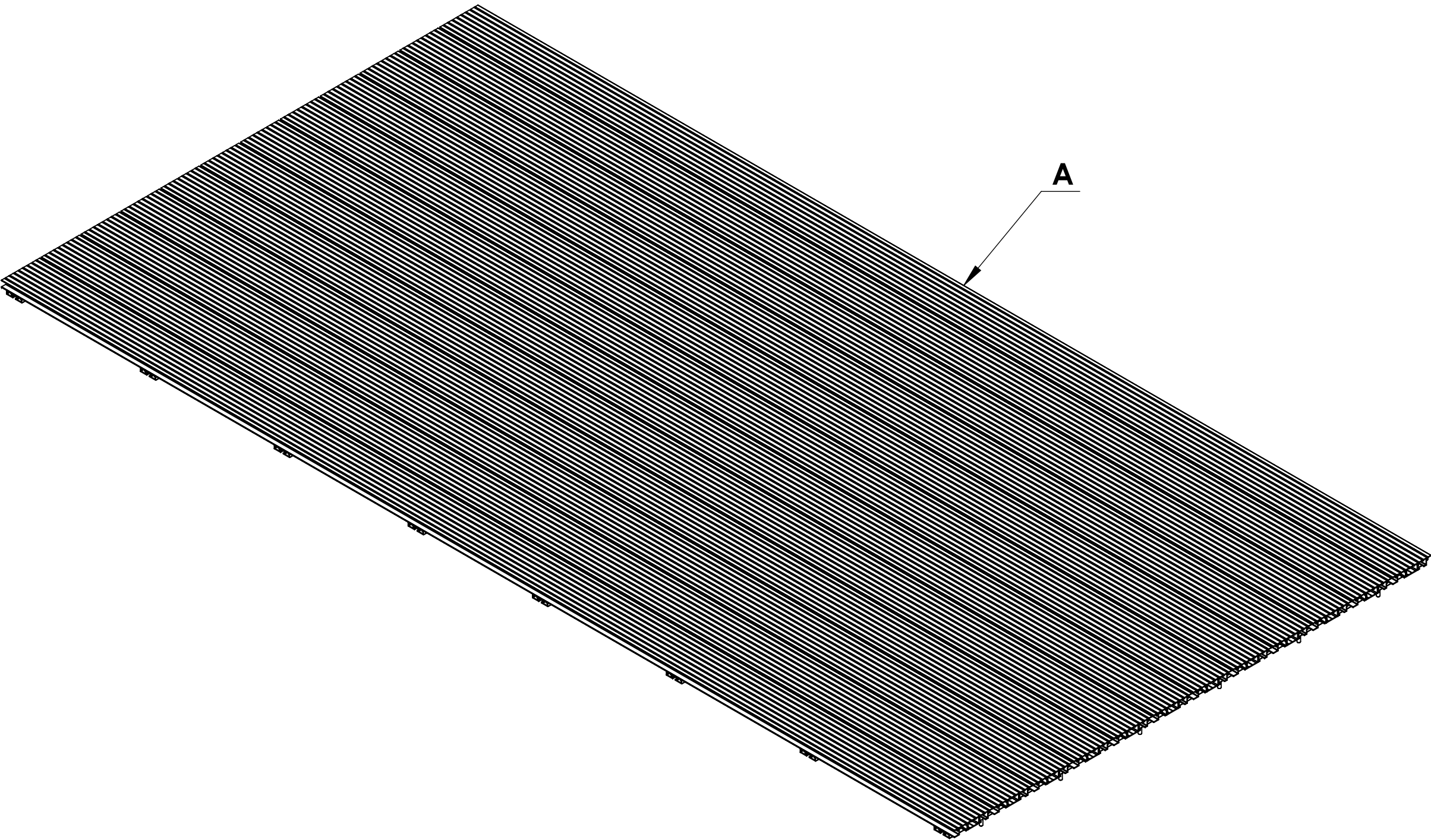


Drawing Title:
(Alideck - Lite Balcony Board With Triple Bolt Channel)
- (Installation Guide)

Product:
Lite Balcony Board

Date 27-06-20	Page Size A3 (L)	Scale DNS	Drawn Shyam
Issuer MIL	Sequence 000001	(Tol) +/- 1mm	Rev V1
If In any doubt about details on this drawing call us on 01622 235 672	 3rd Angle Projection	Finish PPC	Page 5 of 8

Step 4 : Attached the rest of the Boards as shown



Notes.
Example Sections of Lite Balcony Board

Customer Sign Off.

Sign _____

Date_____

Record Of Revision Changes.
1. Creation of drawing (V1)

Colour; Any Standard RAL
Colour

Delivery and Storage.
When components are delivered please ensure they are inspected and stored flat, also please ensure they are stored out of the sun. Do not store components upright.

Product Details:
Lite Balcony Board, Lite Balcony Board Clip,
and Triple Bolt Channel



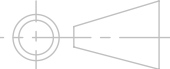
From

This drawing and the product it displays is the sole property of The Milwood Group. any reproduction of this drawing or product without the written permission of The Milwood Group is prohibited.

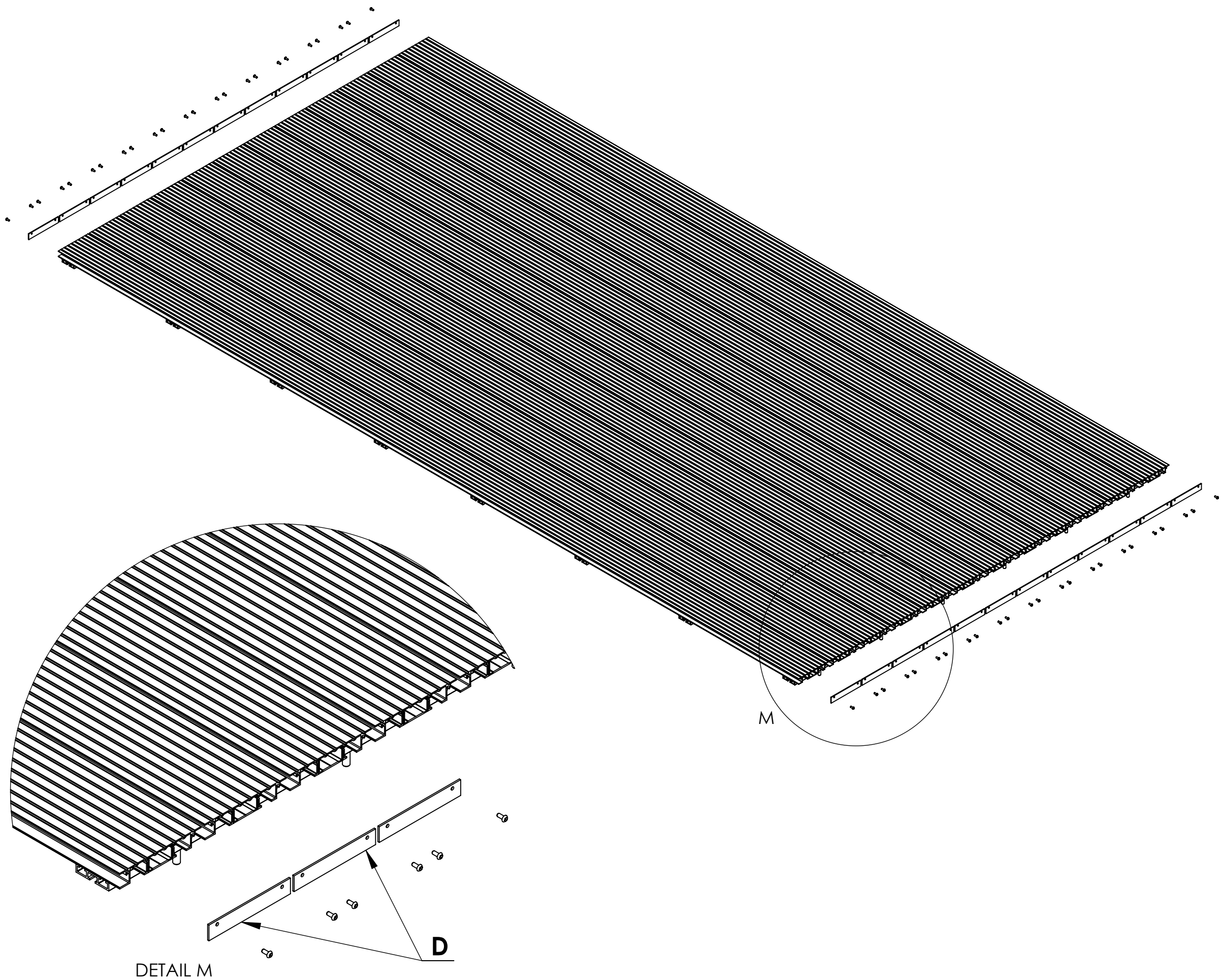


Drawing Title:
(Alideck - Lite Balcony Board With Triple Bolt Channel)
- (Installation Guide)

Product:
Lite Balcony Board

Date 27-06-20	Page Size A3 (L)	Scale DNS	Drawn Shyam
Issuer MIL	Sequence 000001	(Tol) +/- 1mm	Rev V1
If In any doubt about details on this drawing call us on 01622 235 672	 3rd Angle Projection	Finish PPC	Page 6 of 8

Step 5 : Now attach the End Plates using 4mm no. 8 Stainless Steel Screw if required



Notes.
Example Sections of Lite Balcony Board

Customer Sign Off.

Sign _____

Date _____

Record Of Revision Changes.
1. Creation of drawing (V1)

Colour; Any Standard RAL
Colour

Delivery and Storage.
When components are delivered please ensure they are inspected and stored flat, also please ensure they are stored out of the sun. Do not store components upright.

Product Details:
Lite Balcony Board, Lite Balcony Board Clip,
and Triple Bolt Channel

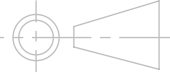


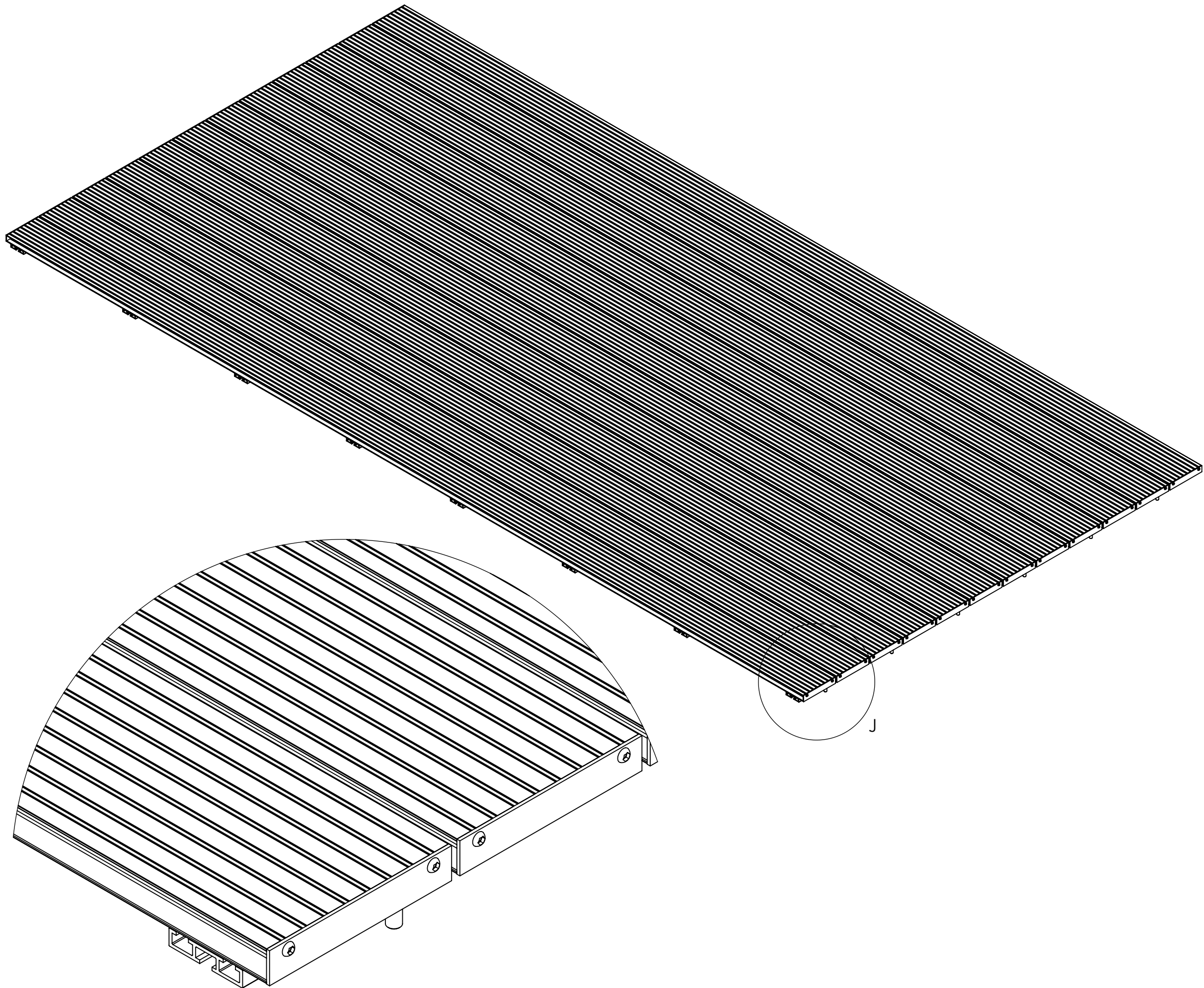
From
This drawing and the product it displays is the sole property of The Milwood Group. any reproduction of this drawing or product without the written permission of The Milwood Group is prohibited.



Drawing Title:
(Alideck - Lite Balcony Board With Triple Bolt Channel)
- (Installation Guide)

Product:
Lite Balcony Board

Date 27-06-20	Page Size A3 (L)	Scale DNS	Drawn Shyam
Issuer MIL	Sequence 000001	(Tol) +/- 1mm	Rev V1
If In any doubt about details on this drawing call us on 01622 235 672	 3rd Angle Projection	Finish PPC	Page 7 of 8



DETAIL J

Notes.
Example Sections of Lite Balcony Board

Customer Sign Off.

Sign _____

Date _____

Record Of Revision Changes.
1. Creation of drawing (V1)

Colour; Any Standard RAL
Colour

Delivery and Storage.
When components are delivered please ensure they are inspected and stored flat, also please ensure they are stored out of the sun. Do not store components upright.

Product Details:
Lite Balcony Board, Lite Balcony Board Clip,
and Triple Bolt Channel



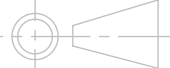
From

This drawing and the product it displays is the sole property of The Milwood Group. any reproduction of this drawing or product without the written permission of The Milwood Group is prohibited.



Drawing Title:
(Alideck - Lite Balcony Board With Triple Bolt Channel)
- (Installation Guide)

Product:
Lite Balcony Board

Date 27-06-20	Page Size A3 (L)	Scale DNS	Drawn Shyam
Issuer MIL	Sequence 000001	(Tol) +/- 1mm	Rev V1
If In any doubt about details on this drawing call us on 01622 235 672	 3rd Angle Projection	Finish PPC	Page 8 of 8