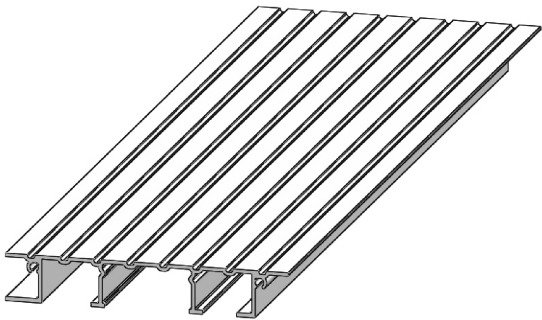
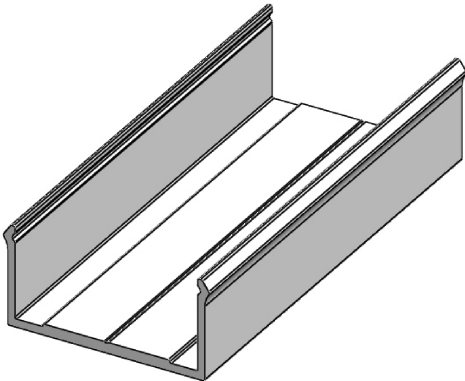


(Alideck - Lite Balcony Board) - (Assembly Drawing)

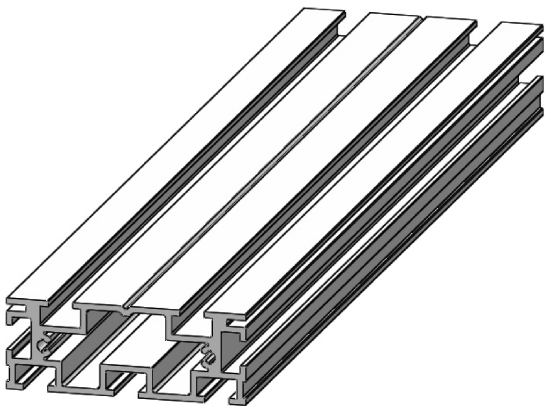
A x 12 - Length 3000mm



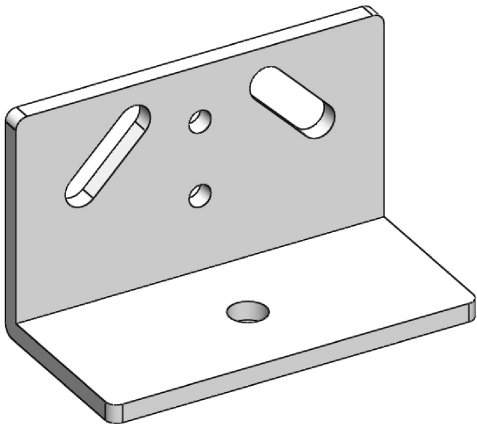
B x 96 - Length 80mm



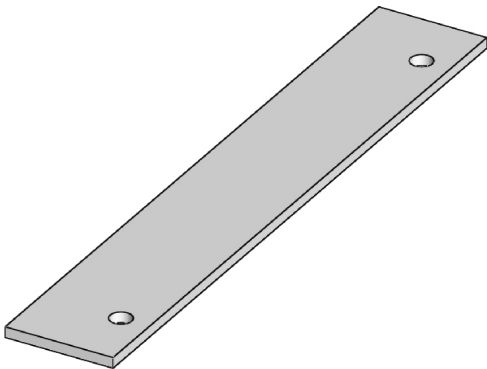
C x 8 - Length 1500mm



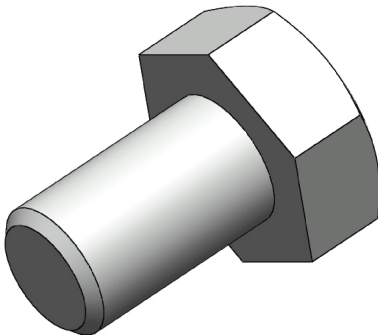
D x 48



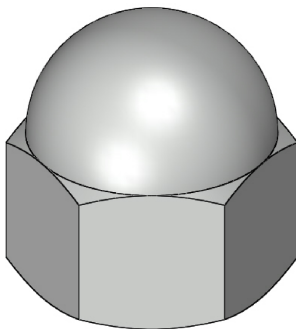
E x 24



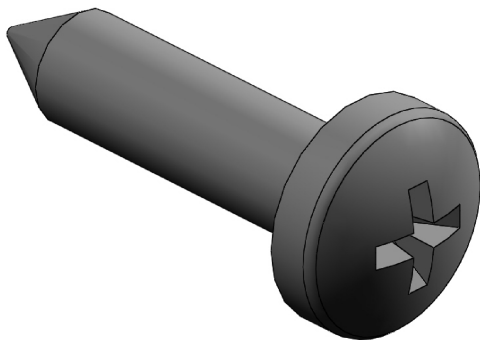
F x 192



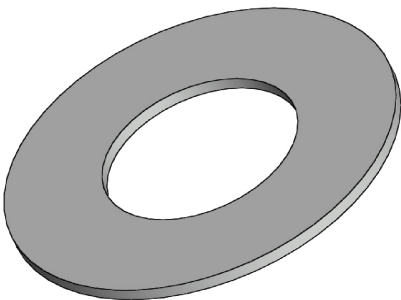
G x 192



H x 48



I x 192



Notes.
Contractor to be responsible for checking this scheme against architects drawings/site requirements and to advise Alideck immediately of any discrepancies. Orders placed against Alideck drawing reference assume approval of this scheme. Any materials required over and above the quantities given, will be charged accordingly.

Customer Sign Off.

Sign _____

Date _____

Record Of Revision Changes.

1. Creation of drawing (V1)

Colour; Textured Silver Grey/
Textured Sand

Delivery and Storage.
When delivered check that all boards and joists are present. Check whether the boards or joists have suffered any visible damage in transit Damaged panels must be noted on the delivery document and replaced if necessary. The boards and joists are delivered on a pallet (protected) and should also be stored this way on site. Do not store boards or joists standing upright.

Delivery Address

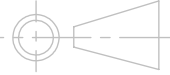


This drawing and the product it displays is the sole property of The Milwood Group. any reproduction of this drawing or product without the written permission of The Milwood Group is prohibited.

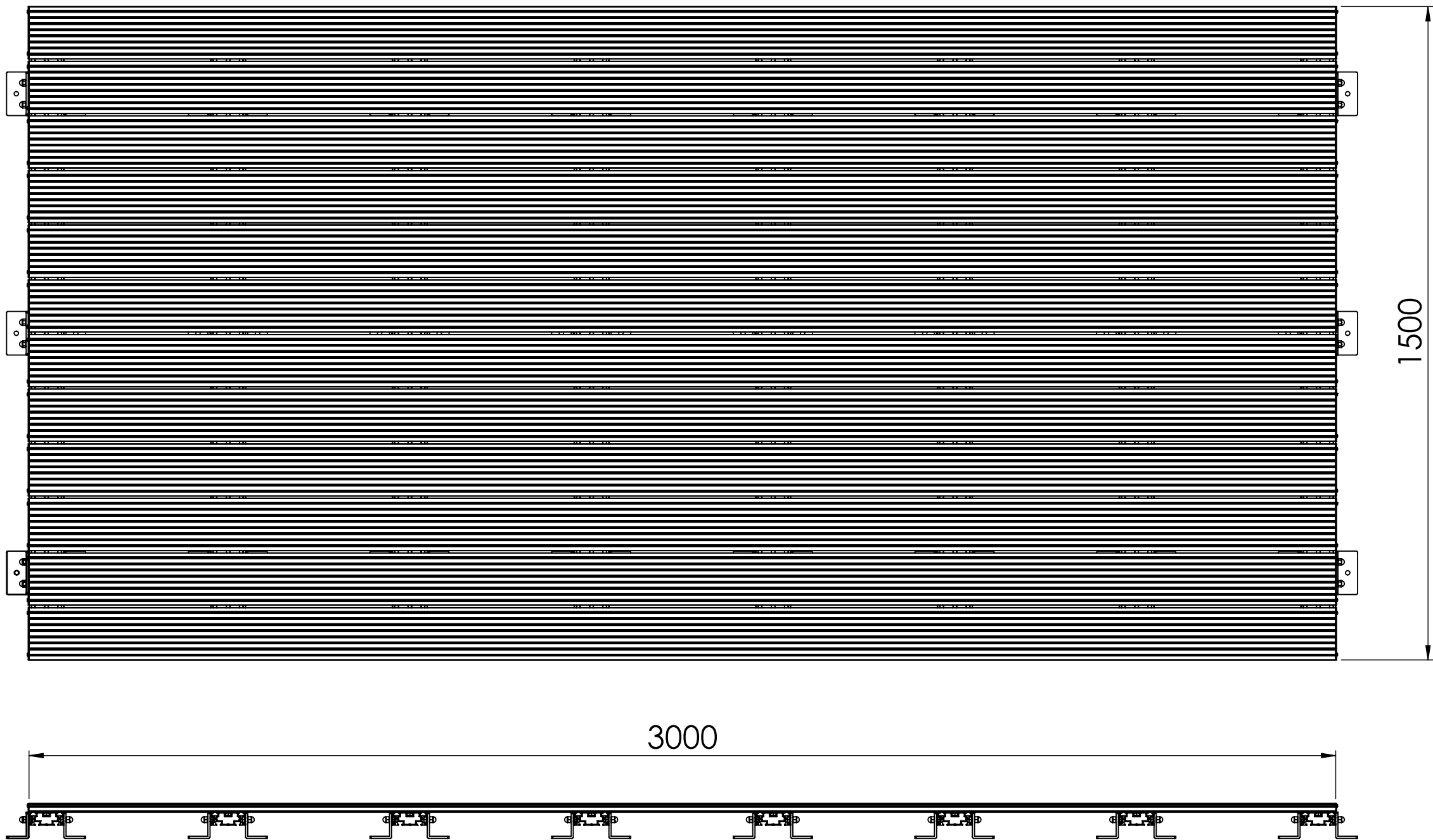


Drawing Title:
(Alideck - Lite Balcony Board) - (Assembly Drawing)

Product:
Lite Balcony Board

Date 26-05-20	Page Size A3 (L)	Scale DNS	Drawn Shyam
Issuer MIL	Sequence 000001	(Tol) +/- 1mm	Rev V1
If In any doubt about details on this drawing call us on 01622 235 672	 3rd Angle Projection	Finish PPC	Page 1 of 10

(Alideck - Lite Balcony Board) - (Assembly Drawing)



Important guidance notes for installation:

1. When installing Lite boards ensure a minimum of 3mm to a maximum of 8mm (we recommend 5mm) is allowed between each board for drainage.
2. When installing onto waterproofing, ensure adequate spreader plates or additional padding is added between the underside of the foot plate and the waterproofing. AliDeck cannot be held responsible for penetration or damage to existing waterproofing. If unsure of application please contact us.
3. Fix all boards within a maximum span requirements allowed, (400mm on the Lite Board) do not exceed the span requirements for each type of board, please refer to the span tables on the website, contact us for further details if unsure.
4. When cutting boards to width, never cut a board less than the centre section of 30mm as the cover clip will not be able to be installed. Consider cutting the first and the last board if required to obtain the desired platform width.
5. Please ensure the decking is covered with a barrier (plywood or plastic material) once installed to prevent any third party debris, swarf or waste material from potentially damaging the surface finish.
6. If you are installing onto existing timber, please ensure you have a clear 150mm of air gap underneath the decking to ensure good airflow and to prevent heat build up.
7. Please ensure each clip is level to the next clip and in line to ensure the boards will clip down successfully.
8. Please be sure the clips are in the correct locations to avoid progressive error, we recommend you installing the first line of clips then install the first board, then install the second line of clips, (just in case an error causes issues to the next board).

Notes.
Contractor to be responsible for checking this scheme against architects drawings/site requirements and to advise Alideck immediately of any discrepancies. Orders placed against Alideck drawing reference assume approval of this scheme. Any materials required over and above the quantities given, will be charged accordingly.

Customer Sign Off.

Sign _____

Date _____

Record Of Revision Changes.
1. Creation of drawing (V1)

Colour; Textured Silver Grey/
Textured Sand

Delivery and Storage.
When delivered check that all boards and joists are present. Check whether the boards or joists have suffered any visible damage in transit Damaged panels must be noted on the delivery document and replaced if necessary. The boards and joists are delivered on a pallet (protected) and should also be stored this way on site. Do not store boards or joists standing upright.

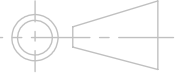
Delivery Address:



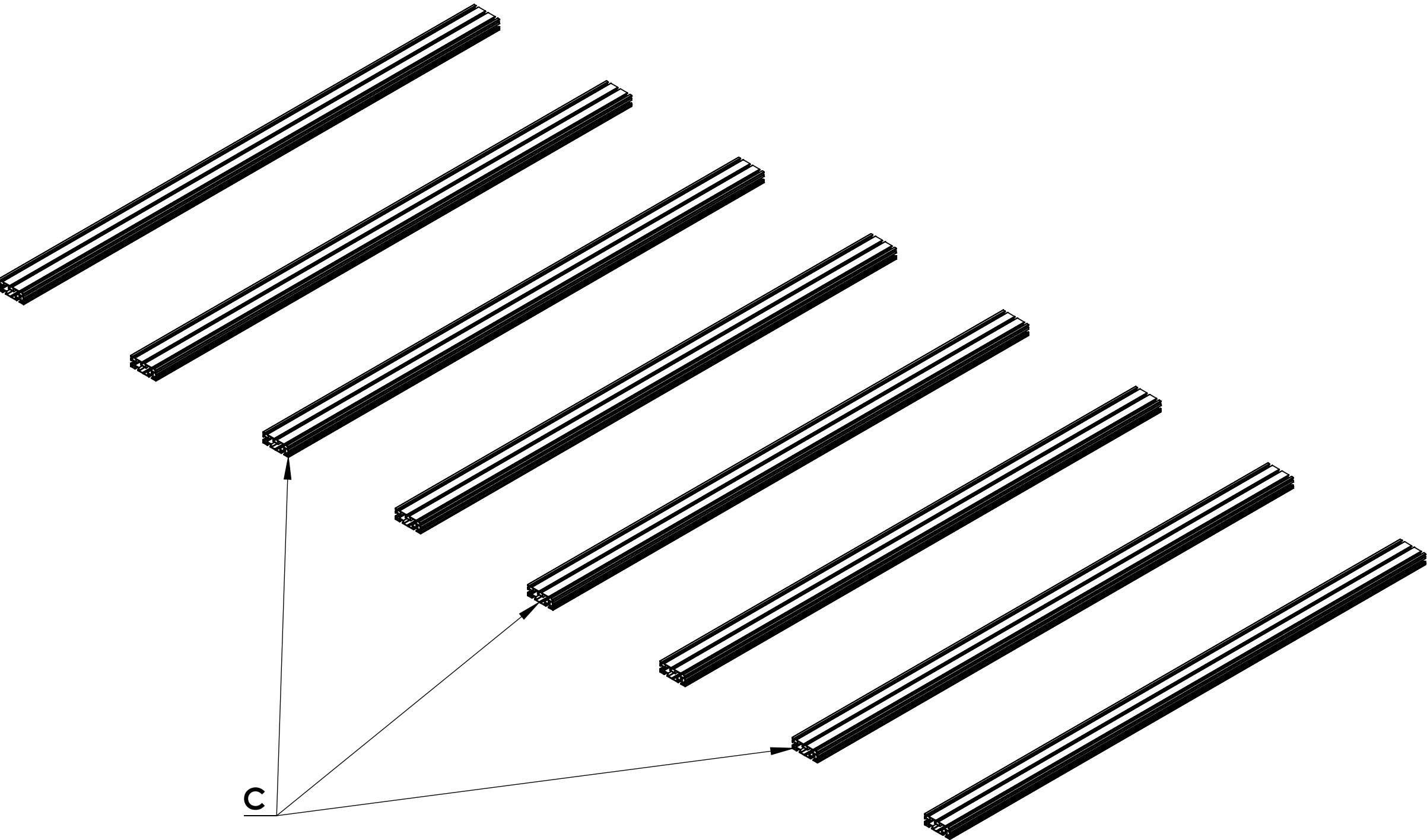
From
This drawing and the product it displays is the sole property of The Milwood Group. any reproduction of this drawing or product without the written permission of The Milwood Group is prohibited.



Drawing Title:
(Alideck - Lite Balcony Board) - (Assembly Drawing)

Product:			
Lite Balcony Board			
Date 26-05-20	Page Size A3 (L)	Scale DNS	Drawn Shyam
Issuer MIL	Sequence 000001	(Tol) +/- 1mm	Rev V1
If in any doubt about details on this drawing call us on 01622 235 672	 3rd Angle Projection	Finish PPC	Page 2 of 10

Step 1 : Lay the joists in the position required (no more than 400mm apart)



Notes.
Contractor to be responsible for checking this scheme against architects drawings/site requirements and to advise Alideck immediately of any discrepancies. Orders placed against Alideck drawing reference assume approval of this scheme. Any materials required over and above the quantities given, will be charged accordingly.

Customer Sign Off.

Sign _____

Date_____

Record Of Revision Changes.
1. Creation of drawing (V1)

Colour; Textured Silver Grey/
Textured Sand

Delivery and Storage.
When delivered check that all boards and joists are present. Check whether the boards or joists have suffered any visible damage in transit Damaged panels must be noted on the delivery document and replaced if necessary. The boards and joists are delivered on a pallet (protected) and should also be stored this way on site. Do not store boards or joists standing upright.

Delivery Address:



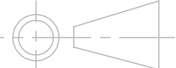
From

This drawing and the product it displays is the sole property of The Milwood Group. any reproduction of this drawing or product without the written permission of The Milwood Group is prohibited.

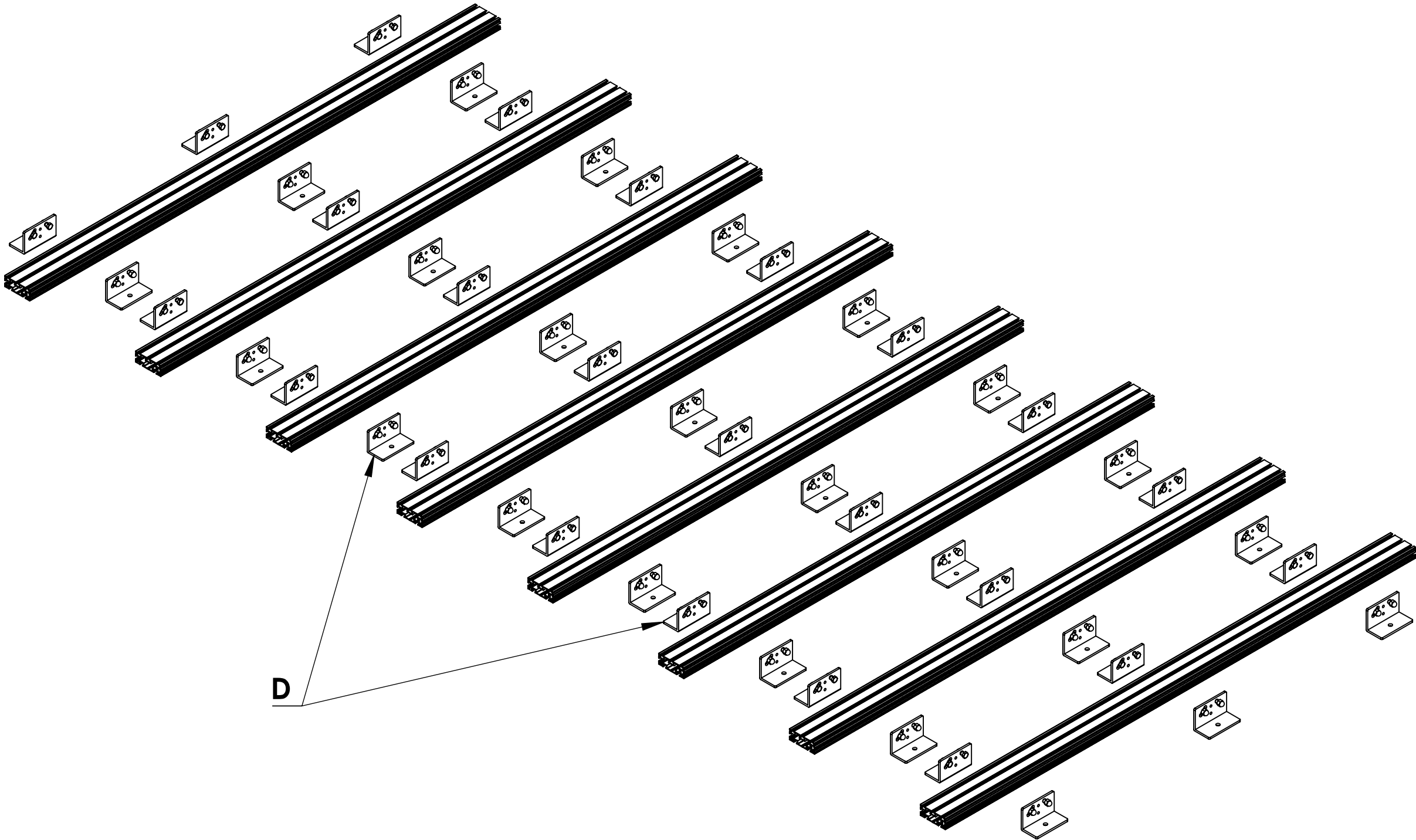


Drawing Title:
(Alideck - Lite Balcony Board) - (Assembly Drawing)

Product:
Lite Balcony Board

Date 26-05-20	Page Size A3 (L)	Scale DNS	Drawn Shyam
Issuer MIL	Sequence 000001	(Tol) +/- 1mm	Rev V1
If In any doubt about details on this drawing call us on 01622 235 672	 3rd Angle Projection	Finish PPC	Page 3 of 10

Step 2 : Attach the adjustable pedestal brackets to the lite joist



Notes.
Contractor to be responsible for checking this scheme against architects drawings/site requirements and to advise Alideck immediately of any discrepancies. Orders placed against Alideck drawing reference assume approval of this scheme. Any materials required over and above the quantities given, will be charged accordingly.

Customer Sign Off.

Sign _____


Date _____

Record Of Revision Changes.
1. Creation of drawing (V1)

Colour; Textured Silver Grey/
Textured Sand


Delivery and Storage.
When delivered check that all boards and joists are present. Check whether the boards or joists have suffered any visible damage in transit Damaged panels must be noted on the delivery document and replaced if necessary. The boards and joists are delivered on a pallet (protected) and should also be stored this way on site. Do not store boards or joists standing upright.

Delivery Address:



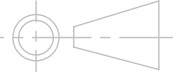
From

This drawing and the product it displays is the sole property of The Milwood Group. any reproduction of this drawing or product without the written permission of The Milwood Group is prohibited.

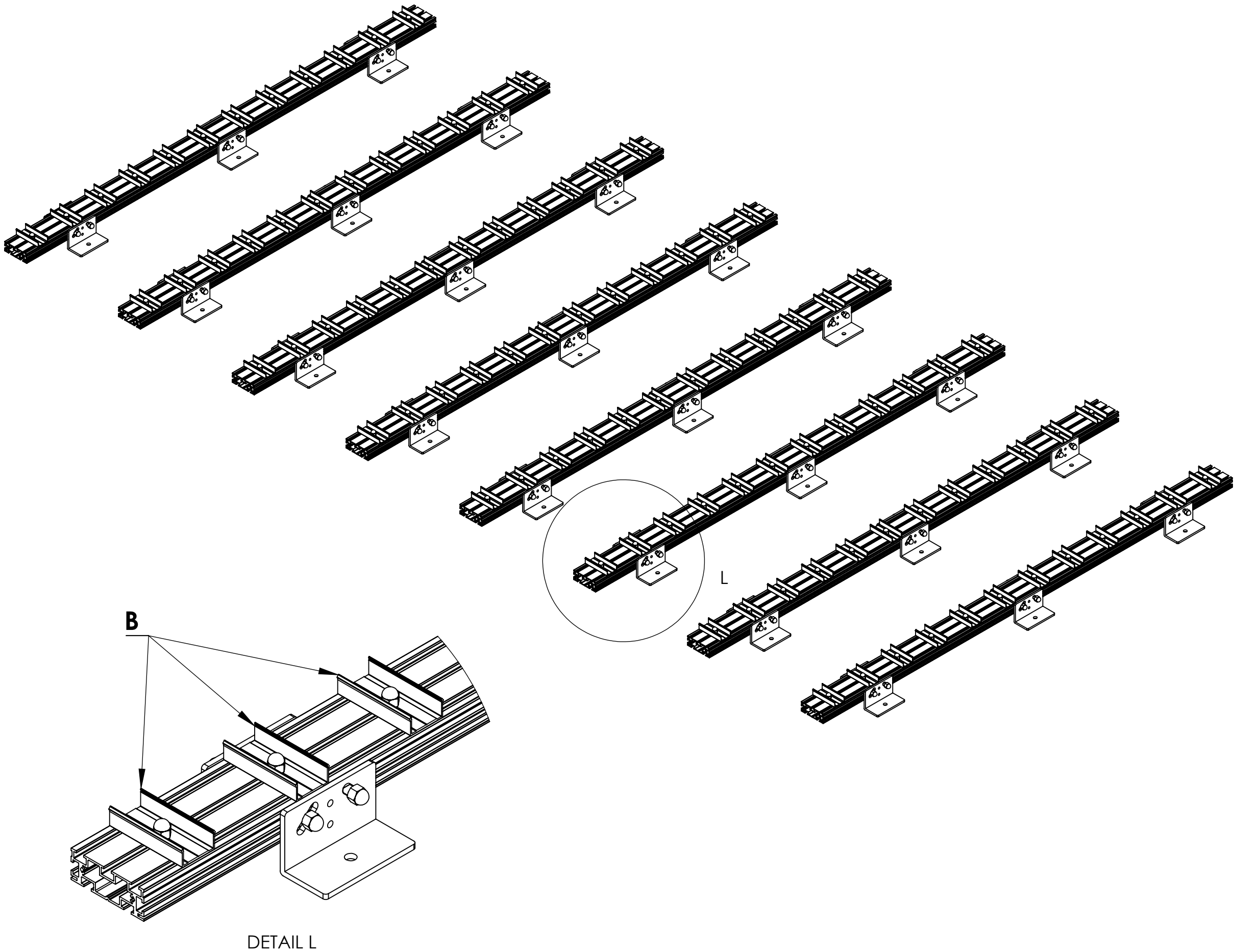


Drawing Title:
(Alideck - Lite Balcony Board) - (Assembly Drawing)

Product:
Lite Balcony Board

Date 26-05-20	Page Size A3 (L)	Scale DNS	Drawn Shyam
Issuer MIL	Sequence 000001	(Tol) +/- 1mm	Rev V1
If In any doubt about details on this drawing call us on 01622 235 672	 3rd Angle Projection	Finish PPC	Page 4 of 10

Step 3 : Attach the clips using self drilling screws and ensure the centre to centre dimension is 125mm for a 5mm board spacing



Notes.
Contractor to be responsible for checking this scheme against architects drawings/site requirements and to advise Alideck immediately of any discrepancies. Orders placed against Alideck drawing reference assume approval of this scheme. Any materials required over and above the quantities given, will be charged accordingly.

Customer Sign Off.

Sign _____


Date _____

Record Of Revision Changes.
1. Creation of drawing (V1)

Colour; Textured Silver Grey/
Textured Sand


Delivery and Storage.
When delivered check that all boards and joists are present. Check whether the boards or joists have suffered any visible damage in transit Damaged panels must be noted on the delivery document and replaced if necessary. The boards and joists are delivered on a pallet (protected) and should also be stored this way on site. Do not store boards or joists standing upright.

Delivery Address:



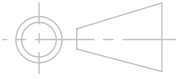
From

This drawing and the product it displays is the sole property of The Milwood Group. any reproduction of this drawing or product without the written permission of The Milwood Group is prohibited.

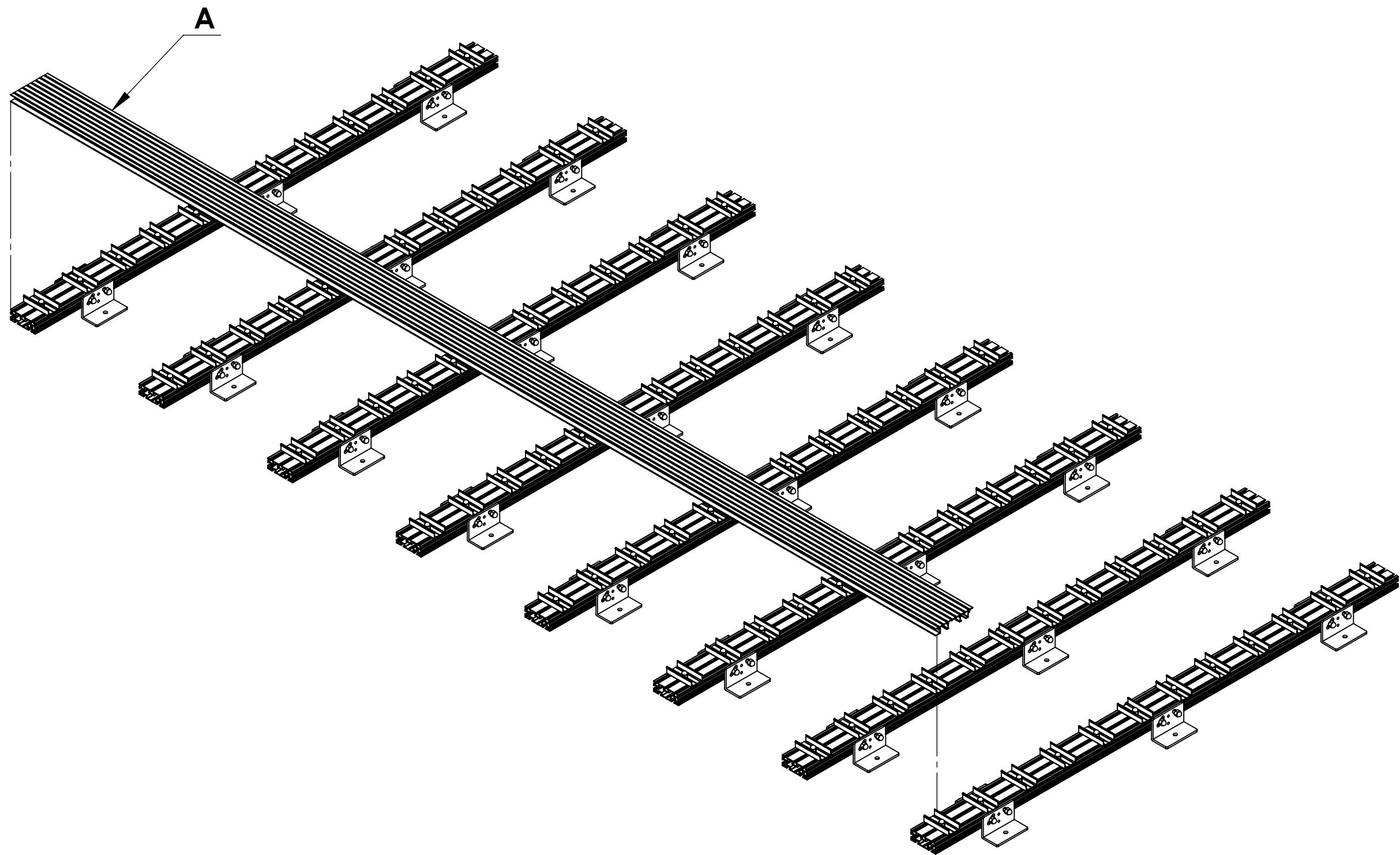


Drawing Title:
(Alideck - Lite Balcony Board) - (Assembly Drawing)

Product:
Lite Balcony Board

Date 26-05-20	Page Size A3 (L)	Scale DNS	Drawn Shyam
Issuer MIL	Sequence 000001	(Tol) +/- 1mm	Rev V1
If In any doubt about details on this drawing call us on 01622 235 672		 3rd Angle Projection	Page 5 of 10

Step 4 : Attach the first board as shown



Notes.
Contractor to be responsible for checking this scheme against architects drawings/site requirements and to advise Alideck immediately of any discrepancies. Orders placed against Alideck drawing reference assume approval of this scheme. Any materials required over and above the quantities given, will be charged accordingly.

Customer Sign Off.

Sign _____

Date _____

Record Of Revision Changes.
1. Creation of drawing (V1)

Colour; Textured Silver Grey/
Textured Sand

Delivery and Storage.
When delivered check that all boards and joists are present. Check whether the boards or joists have suffered any visible damage in transit Damaged panels must be noted on the delivery document and replaced if necessary. The boards and joists are delivered on a pallet (protected) and should also be stored this way on site. Do not store boards or joists standing upright.

Delivery Address:




This drawing and the product it displays is the sole property of The Milwood Group. any reproduction of this drawing or product without the written permission of The Milwood Group is prohibited.

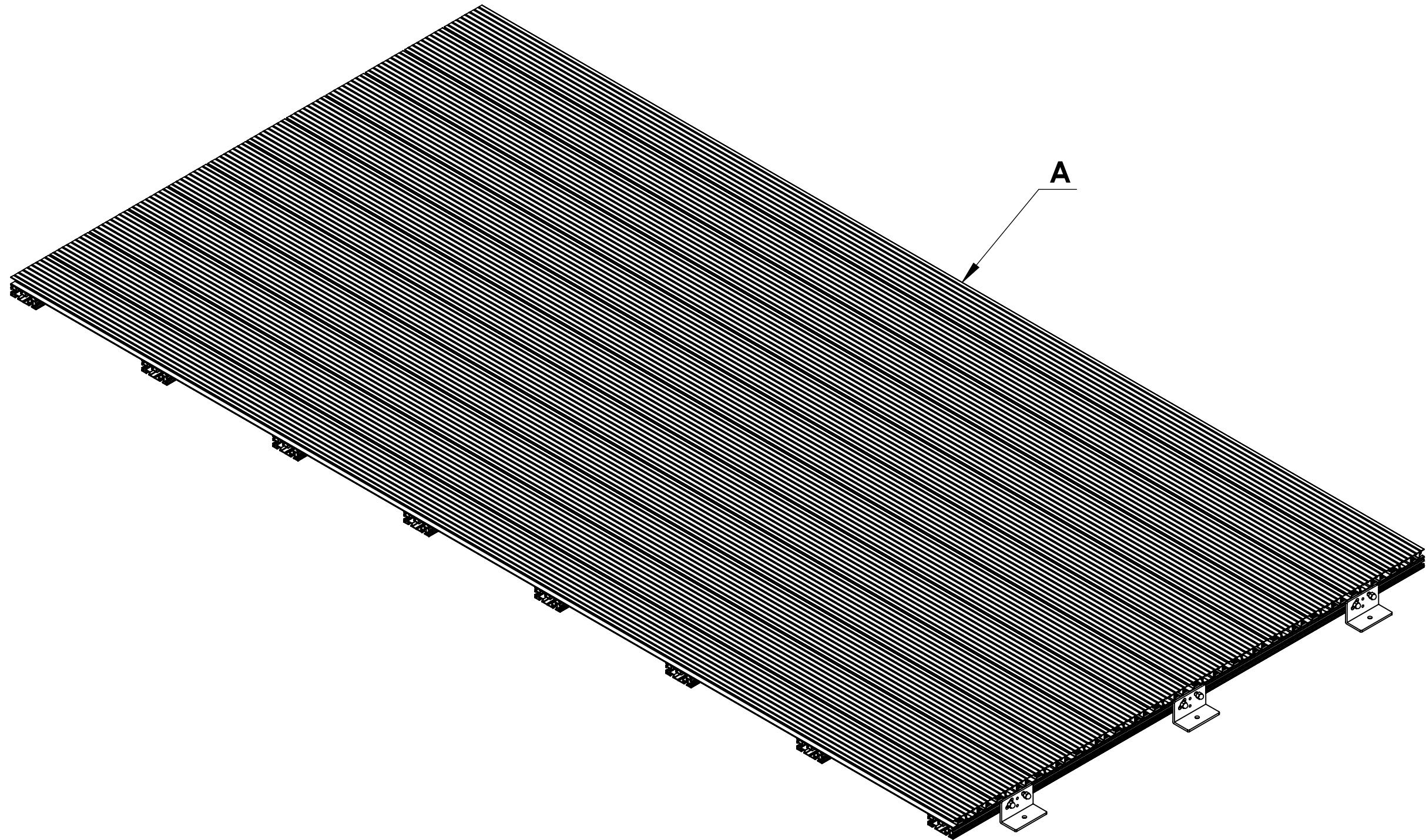


Drawing Title:
(Alideck - Lite Balcony Board) - (Assembly Drawing)

Product:
Lite Balcony Board

Date 26-05-20	Page Size A3 (L)	Scale DNS	Drawn Shyam
Issuer MIL	Sequence 000001	(Tol) +/- 1mm	Rev V1
If In any doubt about details on this drawing call us on 01622 235 672		Finish PPC	Page 6 of 10

Step 5 : Attached the rest of the boards



Notes.
Contractor to be responsible for checking this scheme against architects drawings/site requirements and to advise Alideck immediately of any discrepancies. Orders placed against Alideck drawing reference assume approval of this scheme. Any materials required over and above the quantities given, will be charged accordingly.

Customer Sign Off.

Sign _____


Date_____

Record Of Revision Changes.
1. Creation of drawing (V1)

Colour; Textured Silver Grey/
Textured Sand


Delivery and Storage.
When delivered check that all boards and joists are present. Check whether the boards or joists have suffered any visible damage in transit Damaged panels must be noted on the delivery document and replaced if necessary. The boards and joists are delivered on a pallet (protected) and should also be stored this way on site. Do not store boards or joists standing upright.

Delivery Address:



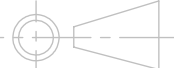
From

This drawing and the product it displays is the sole property of The Milwood Group. any reproduction of this drawing or product without the written permission of The Milwood Group is prohibited.

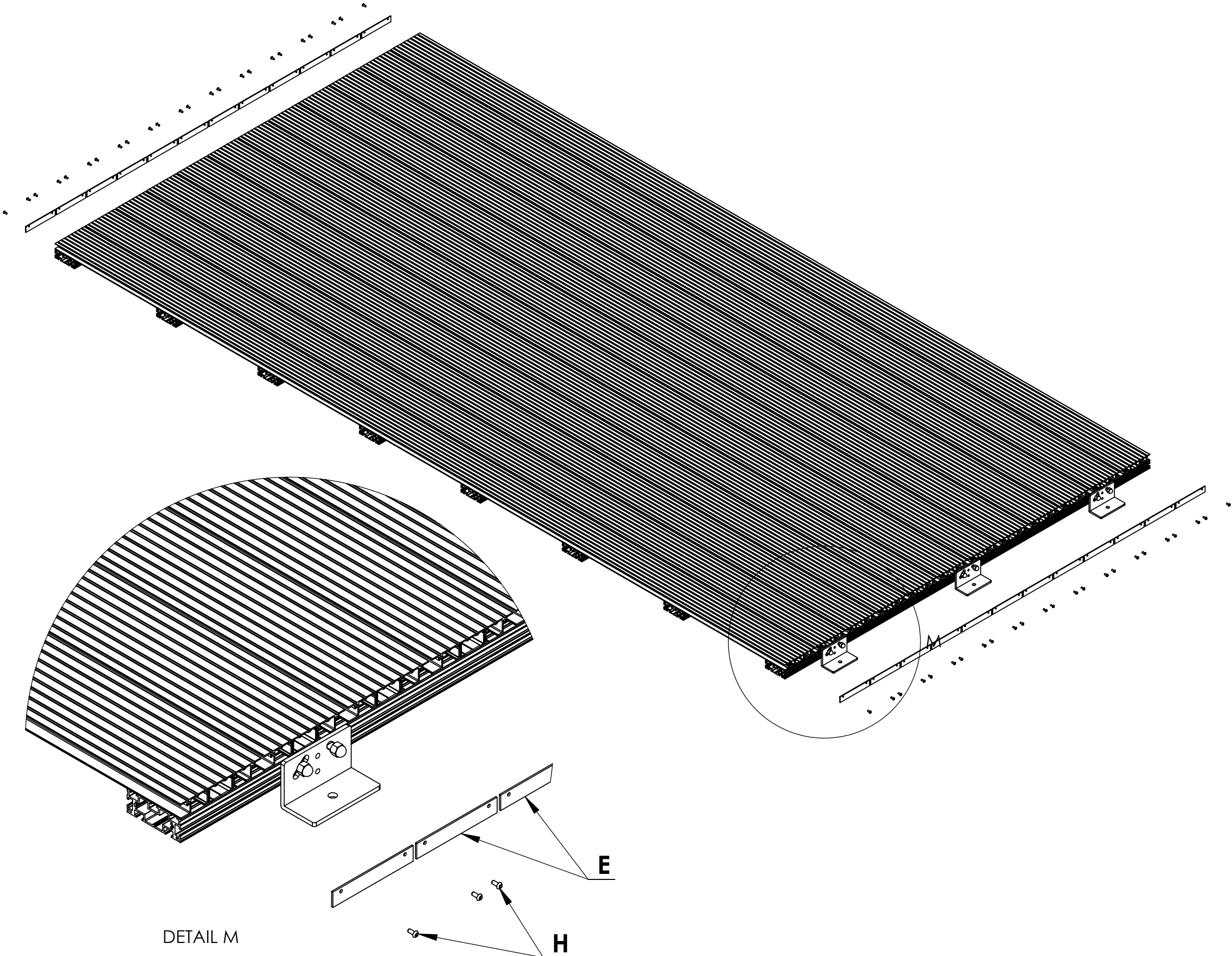


Drawing Title:
(Alideck - Lite Balcony Board) - (Assembly Drawing)

Product:
Lite Balcony Board

Date 26-05-20	Page Size A3 (L)	Scale DNS	Drawn Shyam
Issuer MIL	Sequence 000001	(Tol) +/- 1mm	Rev V1
If In any doubt about details on this drawing call us on 01622 235 672	 3rd Angle Projection	Finish PPC	Page 7 of 10

Step 6 : Now attach the end plates using 4mm no. 8 stainless steel screw if required



Notes.
Contractor to be responsible for checking this scheme against architects drawings/site requirements and to advise Alideck immediately of any discrepancies. Orders placed against Alideck drawing reference assume approval of this scheme. Any materials required over and above the quantities given, will be charged accordingly.

Customer Sign Off.

Sign _____


Date _____

Record Of Revision Changes.
1. Creation of drawing (V1)

Colour; Textured Silver Grey/
Textured Sand


Delivery and Storage.
When delivered check that all boards and joists are present. Check whether the boards or joists have suffered any visible damage in transit Damaged panels must be noted on the delivery document and replaced if necessary. The boards and joists are delivered on a pallet (protected) and should also be stored this way on site. Do not store boards or joists standing upright.

Delivery Address:



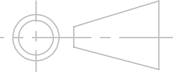
From

This drawing and the product it displays is the sole property of The Milwood Group. any reproduction of this drawing or product without the written permission of The Milwood Group is prohibited.

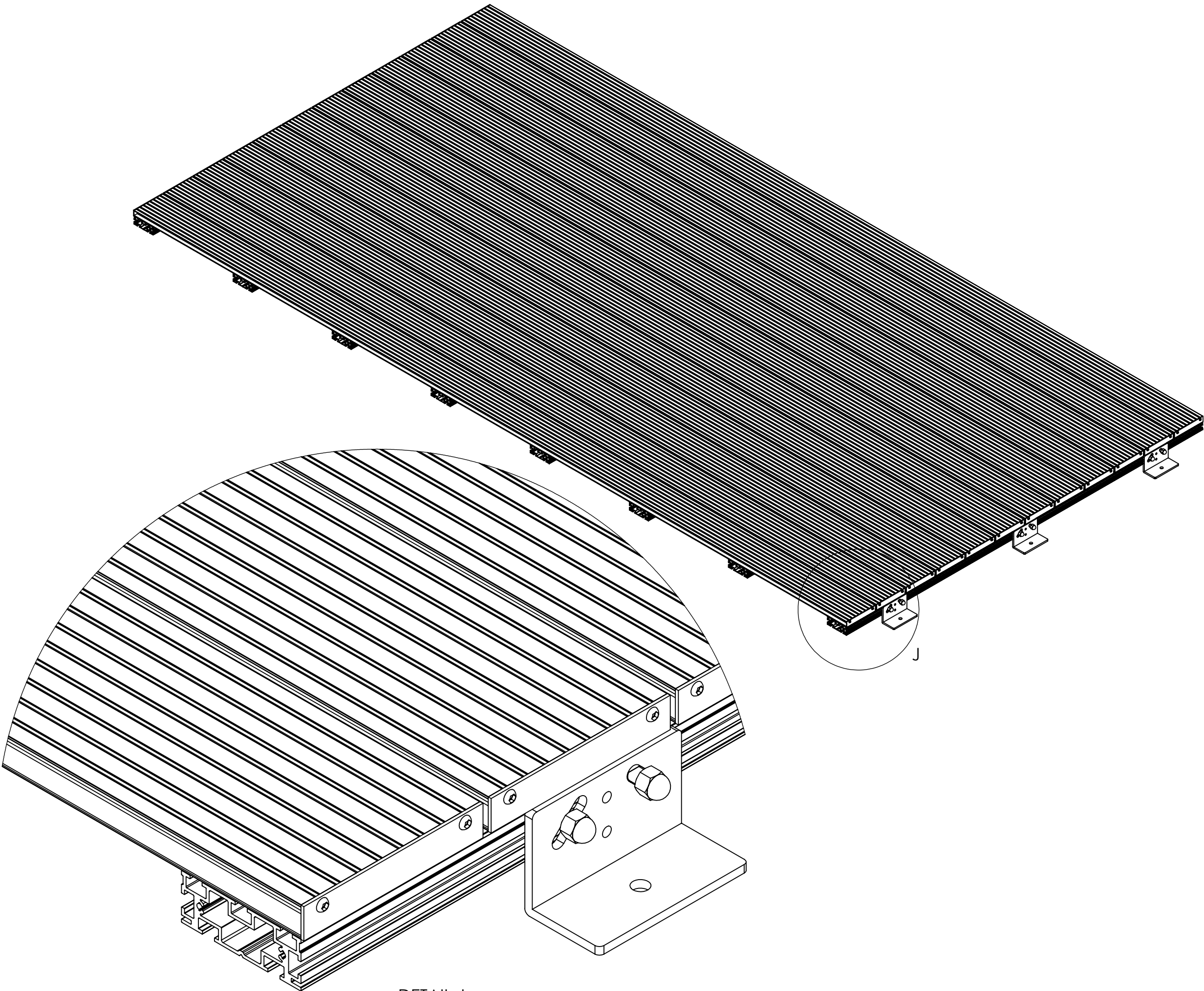


Drawing Title:
(Alideck - Lite Balcony Board) - (Assembly Drawing)

Product:
Lite Balcony Board

Date 26-05-20	Page Size A3 (L)	Scale DNS	Drawn Shyam
Issuer MIL	Sequence 000001	(Tol) +/- 1mm	Rev V1
If In any doubt about details on this drawing call us on 01622 235 672	 3rd Angle Projection	Finish PPC	Page 8 of 10

(Alideck - Lite Balcony Board) - (Assembly Drawing)



Notes.
Contractor to be responsible for checking this scheme against architects drawings/site requirements and to advise Alideck immediately of any discrepancies. Orders placed against Alideck drawing reference assume approval of this scheme. Any materials required over and above the quantities given, will be charged accordingly.

Customer Sign Off.

Sign _____

Date _____

Record Of Revision Changes.
1. Creation of drawing (V1)

Colour; Textured Silver Grey/
Textured Sand

Delivery and Storage.
When delivered check that all boards and joists are present. Check whether the boards or joists have suffered any visible damage in transit Damaged panels must be noted on the delivery document and replaced if necessary. The boards and joists are delivered on a pallet (protected) and should also be stored this way on site. Do not store boards or joists standing upright.

Delivery Address:

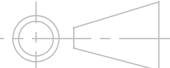


From
This drawing and the product it displays is the sole property of The Milwood Group any reproduction of this drawing or product without the written permission of The Milwood Group is prohibited.



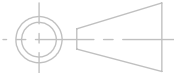
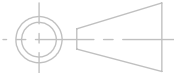
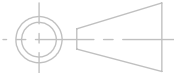


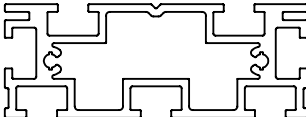
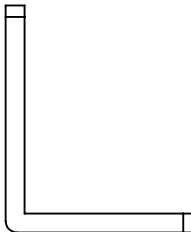


Drawing Title:
(Alideck - Lite Balcony Board) - (Assembly Drawing)

Product:
Lite Balcony Board

Date 26-05-20	Page Size A3 (L)	Scale DNS	Drawn Shyam
Issuer MIL	Sequence 000001	(Tol) +/- 1mm	Rev V1
If In any doubt about details on this drawing call us on 01622 235 672	 3rd Angle Projection	Finish PPC	Page 9 of 10

(Alideck - Lite Balcony Board) - (Assembly Drawing)

<div>(Alideck - Lite Balcony Board) - (Assembly Drawing)</div>					<div>Notes. Contractor to be responsible for checking this scheme against architects drawings/site requirements and to advise Alideck immediately of any discrepancies. Orders placed against Alideck drawing reference assume approval of this scheme. Any materials required over and above the quantities given, will be charged accordingly.</div> <div>Customer Sign Off. Sign _____ Date _____</div> <div>Record Of Revision Changes. 1. Creation of drawing (V1)</div> <div>Colour; Textured Silver Grey/ Textured Sand</div> <div>Delivery and Storage. When delivered check that all boards and joists are present. Check whether the boards or joists have suffered any visible damage in transit Damaged panels must be noted on the delivery document and replaced if necessary. The boards and joists are delivered on a pallet (protected) and should also be stored this way on site. Do not store boards or joists standing upright.</div> <div>Delivery Address</div> <div><div>From</div><div>This drawing and the product it displays is the sole property of The Milwood Group any reproduction of this drawing or product without the written permission of The Milwood Group is prohibited.</div></div> <div>Drawing Title: (Alideck - Lite Balcony Board) - (Assembly Drawing)</div> <div>Product: Lite Balcony Board</div> <table><tr><td>Date 26-05-20</td><td>Page Size A3 (L)</td><td>Scale DNS</td><td>Drawn Shyam</td></tr><tr><td>Issuer MIL</td><td>Sequence 000001</td><td>(Tol) +/- 1mm</td><td>Rev V1</td></tr><tr><td>If In any doubt about details on this drawing call us on 01622 235 672</td><td><div>3rd Angle Projection</div></td><td>Finish PPC</td><td>Page 10 of 10</td></tr></table>	Date 26-05-20	Page Size A3 (L)	Scale DNS	Drawn Shyam	Issuer MIL	Sequence 000001	(Tol) +/- 1mm	Rev V1	If In any doubt about details on this drawing call us on 01622 235 672	 <div>3rd Angle Projection</div>	Finish PPC	Page 10 of 10
Date 26-05-20	Page Size A3 (L)	Scale DNS	Drawn Shyam														
Issuer MIL	Sequence 000001	(Tol) +/- 1mm	Rev V1														
If In any doubt about details on this drawing call us on 01622 235 672	 <div>3rd Angle Projection</div>	Finish PPC	Page 10 of 10														
<div>Board Type</div> <div></div> <div>Lite Balcony Board (20mm)</div>	<div>Amounts / Cutting List</div> <div>12 x at 3000mm</div>	<div>Clip Type</div> <div></div> <div>Lite Balcony Board Clip (20mm)</div>	<div>Amounts / Cutting List</div> <div>96 x at 80mm</div>														
<div>Joist Type</div> <div></div> <div>Lite Joist</div>	<div>Amounts / Cutting List</div> <div>8 x at 1500mm</div>	<div>Pedistal Type</div> <div></div> <div>Simple Profile Bracket</div>	<div>Amounts</div> <div>48 x Brackets</div>														
<div>Gutter Channel Type</div> <div>N.A</div>	<div>Amounts</div> <div>N.A</div>	<div>Extras</div> <div>Board End Plates (SNR / JNR)</div> <div>Can Of Paint (With Brush)</div> <div>Aerosole Paint</div> <div>Fixings</div>	<div>Amounts</div> <div>24 x Of - JNR / SNR End Plates</div> <div>1 x Textured Silver Grey/ Textured Sand</div> <div>1 x Textured Silver Grey/ Textured Sand</div> <div>192 x Of - M8 x 30mm Bolts (Zinc)</div> <div>192 x Of - M8 Washers (Zinc)</div> <div>192 x Of - M8 Dome Head Nut (Zinc)</div> <div>48 x Of - 4mm No 8 Stainless Steel Screw</div>														